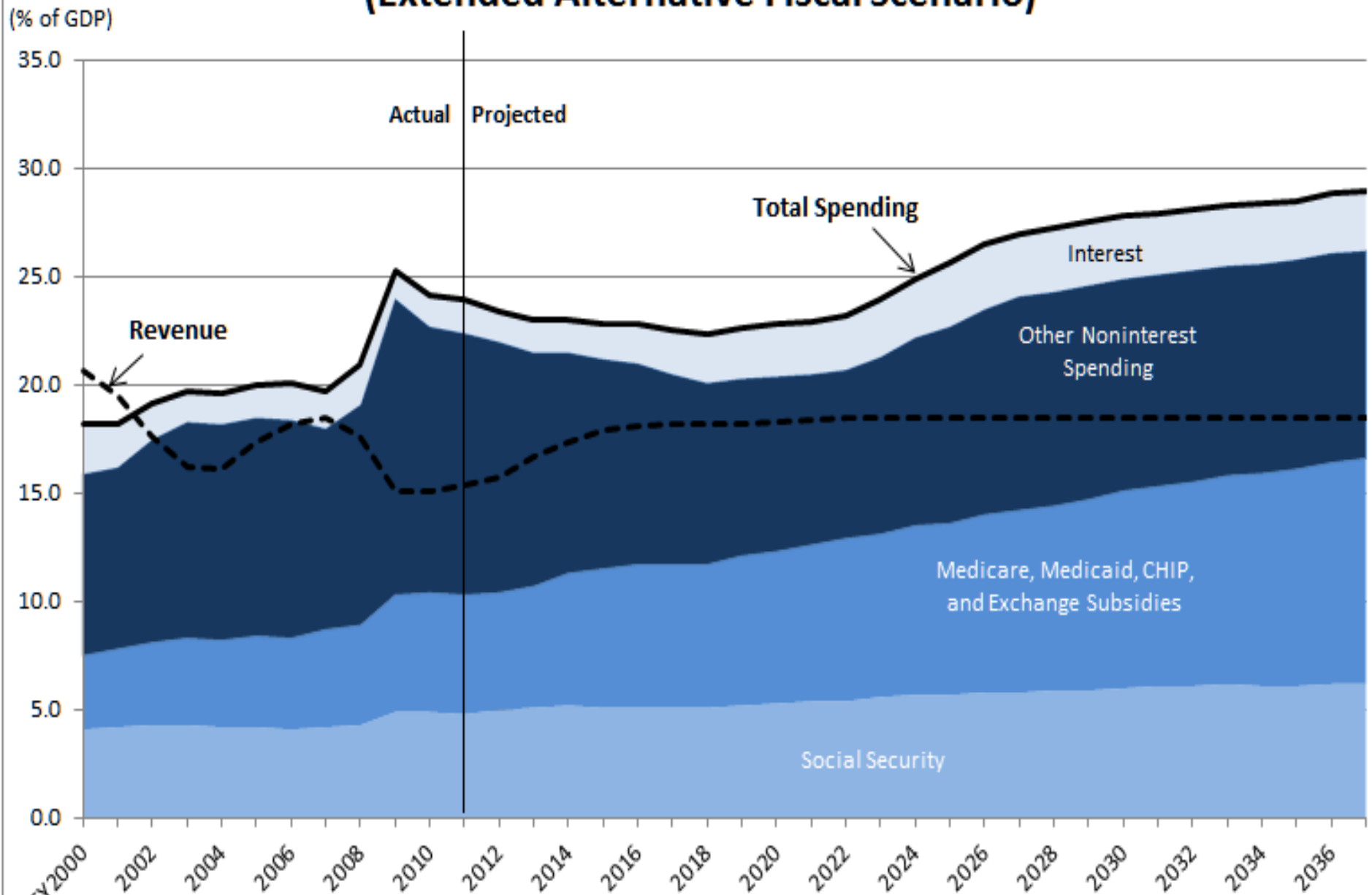
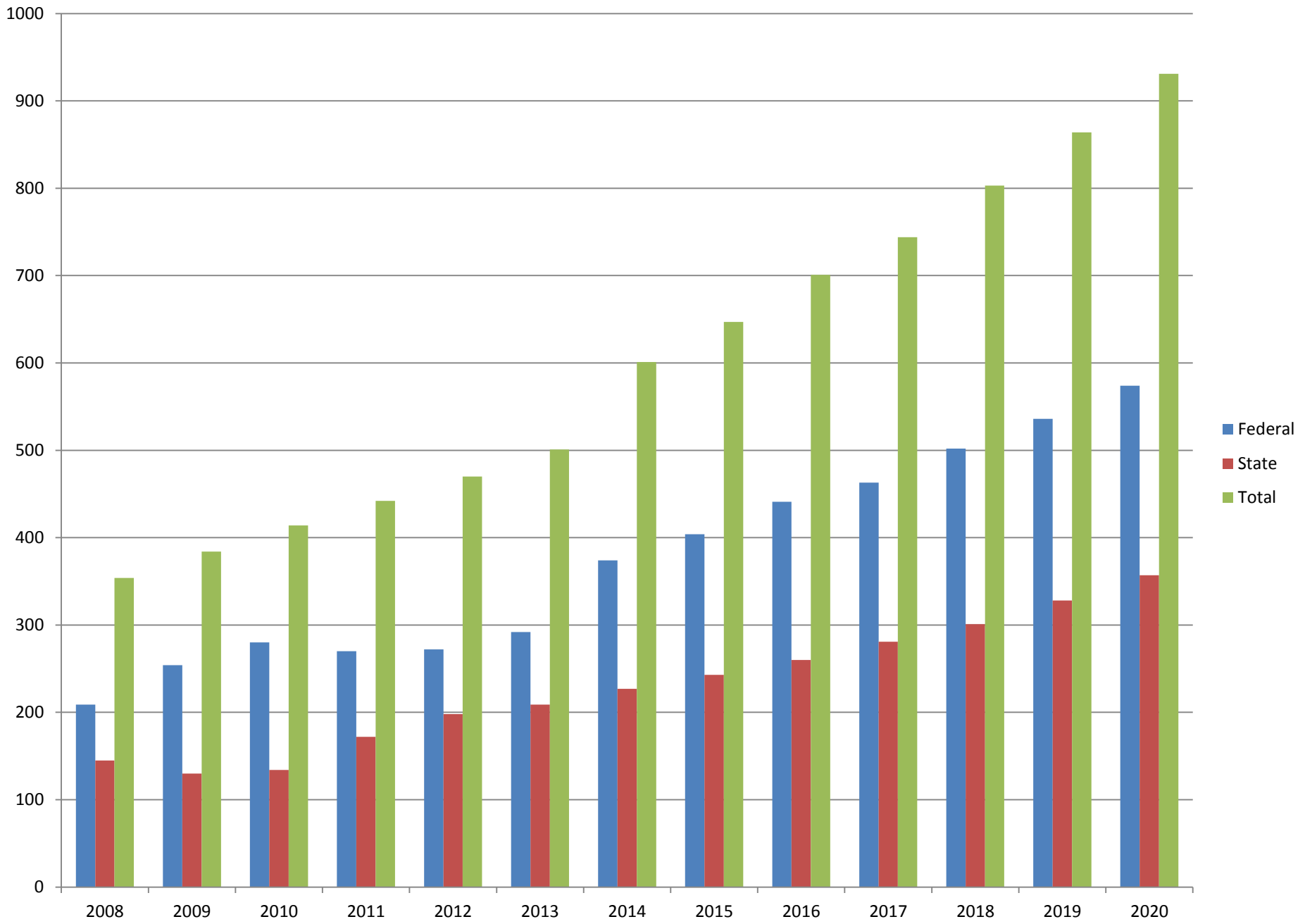


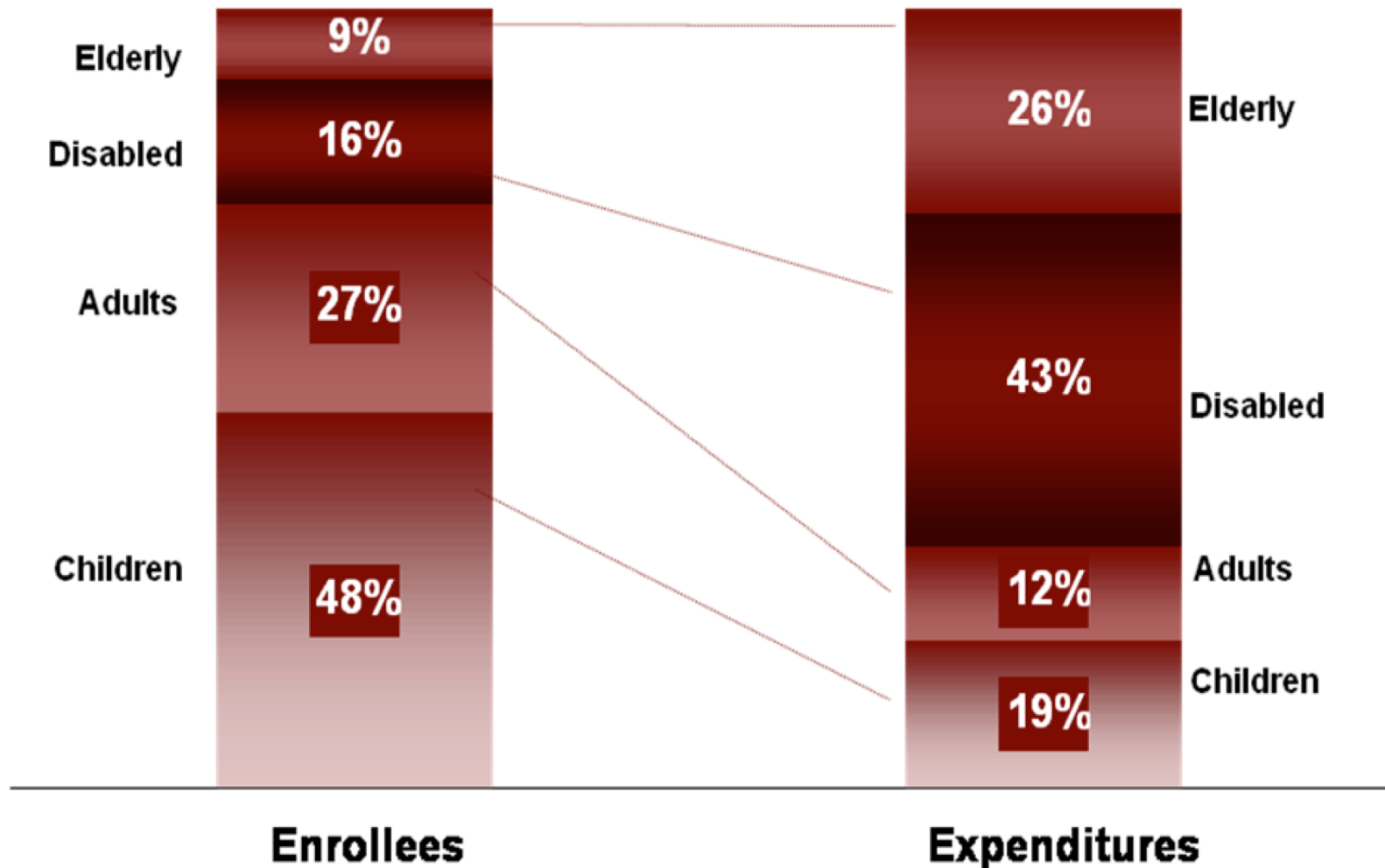
Effect of Health Spending on Federal Budget (Extended Alternative Fiscal Scenario)



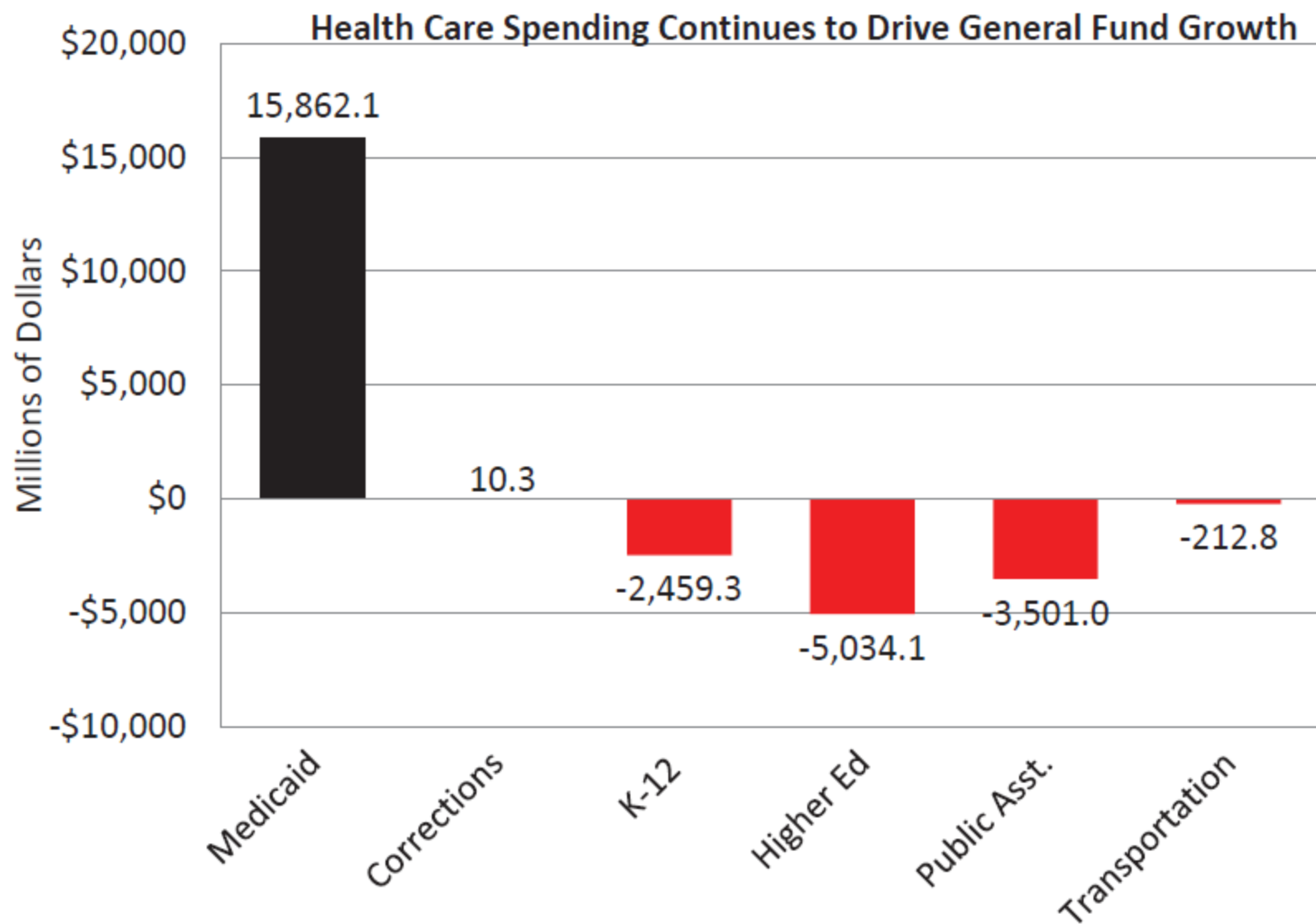
Source: Congressional Budget Office



What Groups Drive Medicaid Spending?

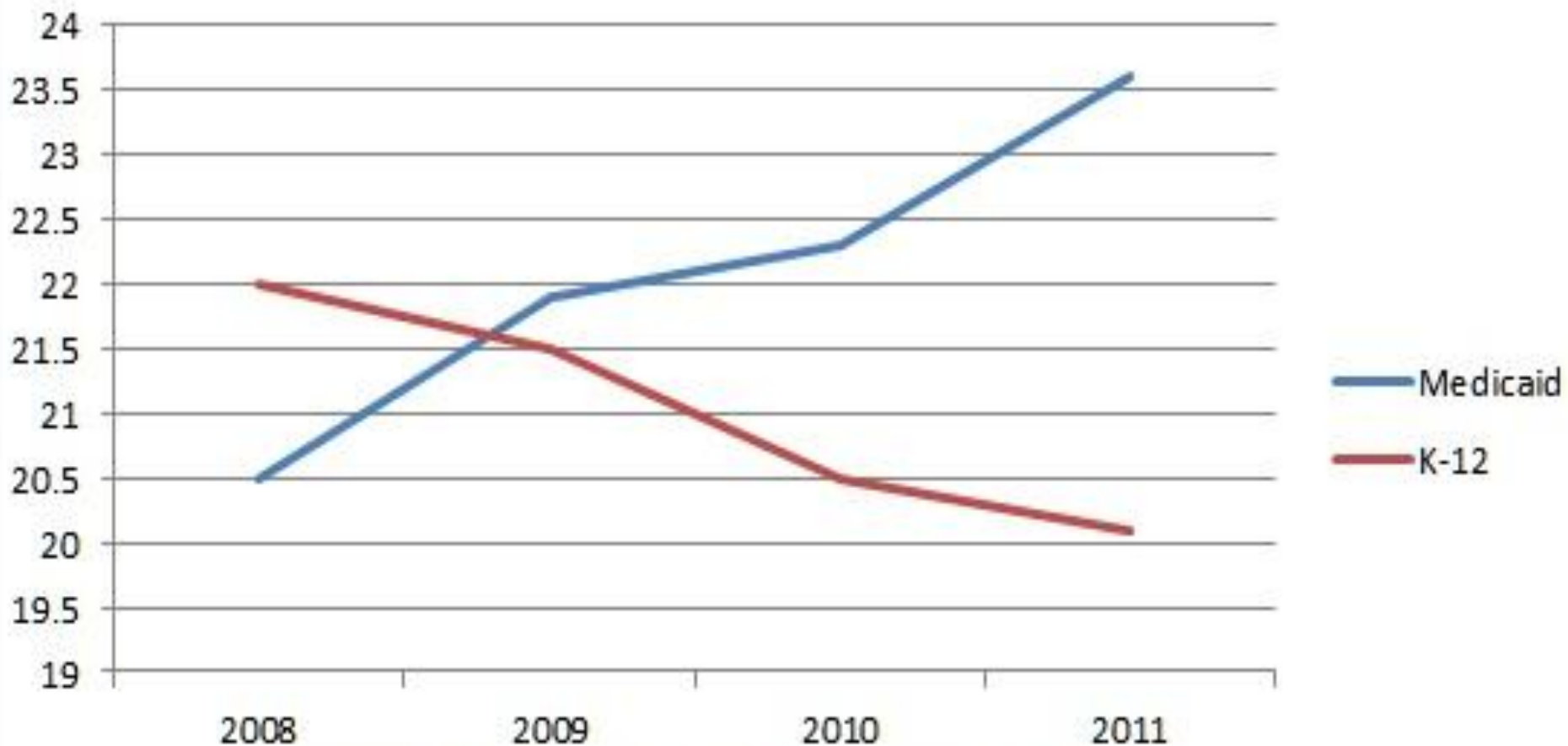


Changes in General Fund Spending by Category Between Fiscal 2011 and Fiscal 2012



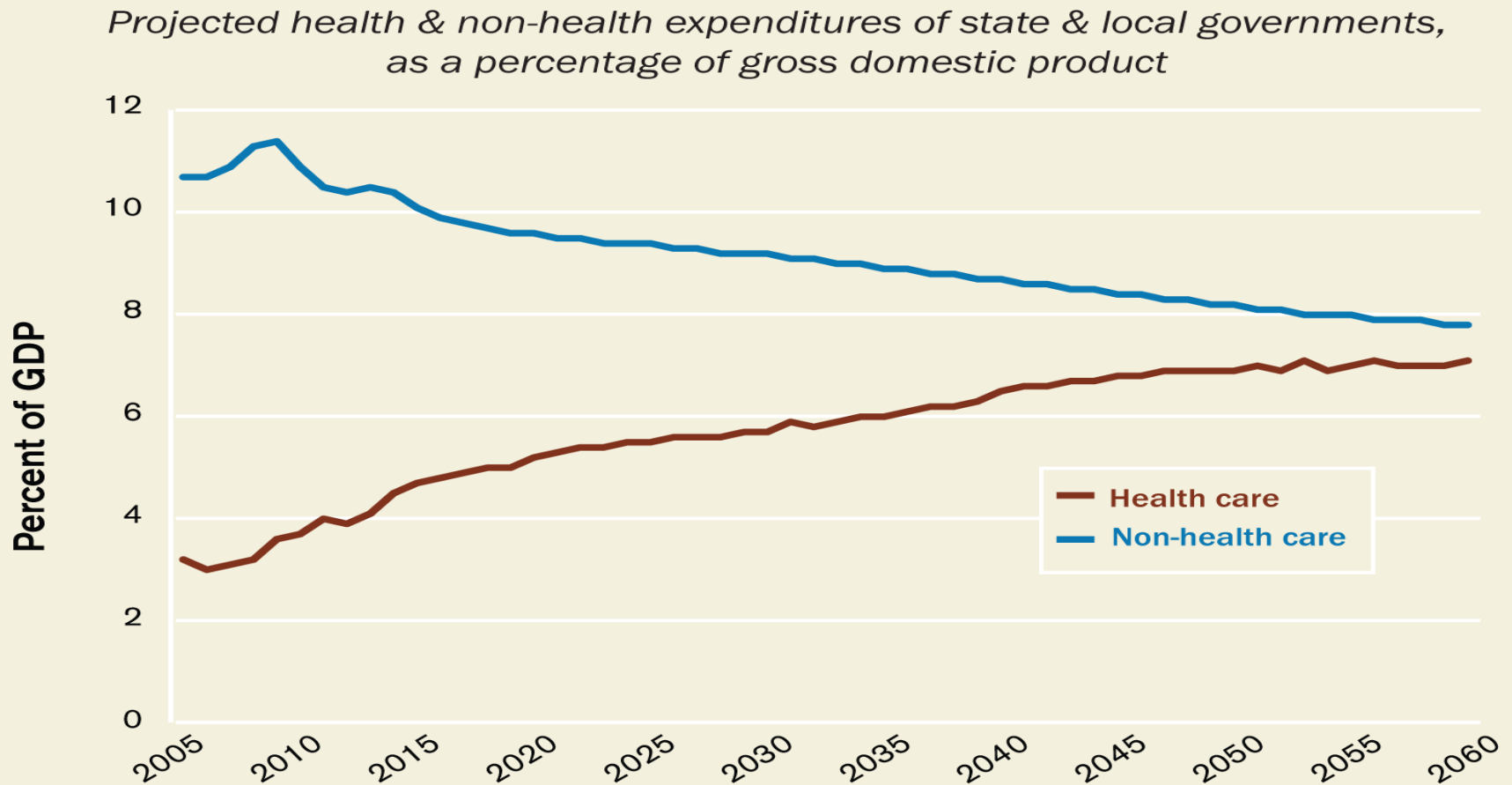
Fiscal 2011 data is based on enacted budgets and fiscal 2012 data is based on governors' proposed budgets

State Expenditures on Medicaid and K-12 as Percentage of Total 2008-2011



Source: NABSO State Expenditures Report, December 2011

Figure 6 | Rising health care costs will place increasing pressure on state and local governments



Source: U.S. Government Accountability Office, *State and Local Governments' Fiscal Outlook*, April 2012 Update, GAO-12-523SP, April 5, 2012