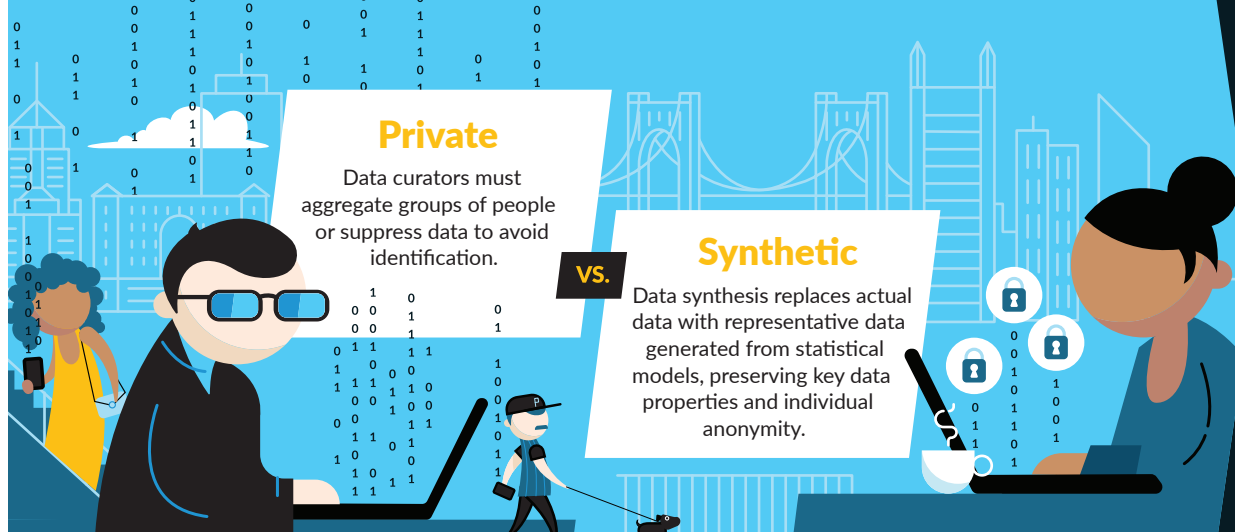




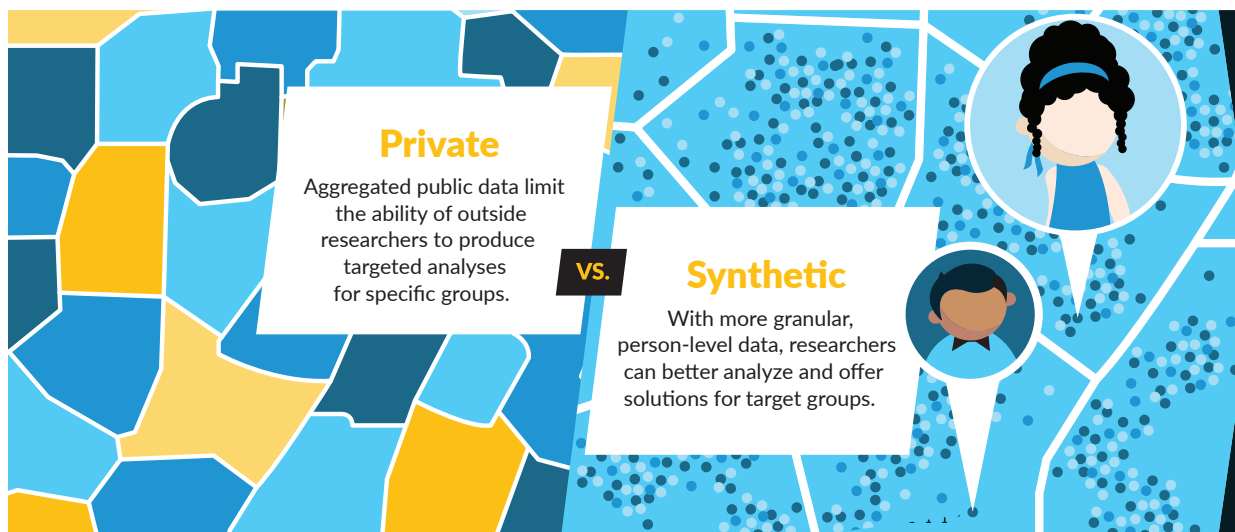
Why Synthetic Data Works for Allegheny County

To improve service provision and care coordination, Allegheny County provides information on individuals receiving services to service providers and, with appropriate agreements, to outside researchers. Greater access to this information could improve how the county designs and delivers services, but public release of individual-level data can pose privacy concerns. By releasing synthetic data instead, the County can accomplish both - preserving people's privacy while making information more widely available.



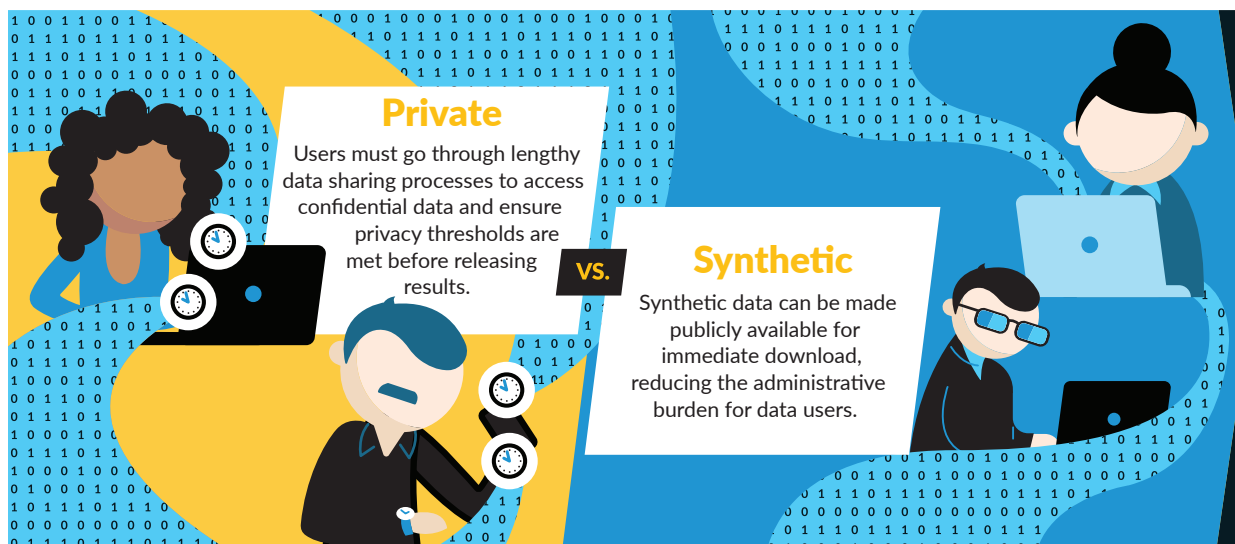
Protected

Synthetic data mitigate privacy concerns.



Useful

Synthetic data allow for flexible and disaggregated analyses.



Accessible

Synthetic data save data users' time and resources.