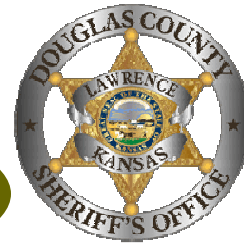


Reentry News

Corrections Division Reentry Program



November 4th, 2009

Volume II, Issue II

Inside this issue:

TJC Tidbits

Program Spotlight

TJC Reentry Org Chart

Crazy

Thanks to...

*Community Resource
Spotlight: The T*

Bus Passes Available

Who Do I Call?

Contact Information

Mission Statement

What is the Point?

TJC TIDBITS

WHAT ARE ALL THOSE ADVISORY BOARDS SHANNON HOSTS?

TJC MISSION STATEMENT: DEVELOPED AS A COMMUNITY-WIDE MISSION STATEMENT FOR THE REENTRY INITIATIVE.

RESOURCE CARD: RECENTLY PARTNERED WITH LAWRENCE-DOUGLAS COUNTY HOUSING AUTHORITY TO DEVELOP UNIVERSAL, DOUGLAS COUNTY SPECIFIC RESOURCE MAP.

DATA EVALUATION: WHO, WHAT & HOW TO MEASURE OUTCOMES, FACILITY- & COMMUNITY-BASED.

SCREEN & ASSESS: IMPLEMENTED THE PROXY (SEE PAGE 4) AND USE OF THE LSI/R ASSESSMENT.

PROGRAMS: FOCUS ON CORE PROGRAM NEEDS, WITHIN THE FACILITY AND INTO THE COMMUNITY.

WELCOME!

► NEW COMMUNITY-BASED ADVISORY COUNCIL MEMBER, TOM KERN, LAWRENCE CHAMBER OF COMMERCE CEO.

► NEW TJC SITES: KENT COUNTY (MI); ORANGE COUNTY (CA); DAVIDSON COUNTY (TN); AND LA CROSSE COUNTY (WI)

► NEW CCCR MEMBER, DR. MARCIANA VEQUIST, FORENSIC SERVICES COORDINATOR FOR BERT NASH COMMUNITY MENTAL HEALTH CENTER

INTERESTED IN REPRESENTING YOUR AGENCY ON A TJC BOARD? CONTACT SHANNON MURPHY.

ARE YOU MISSING?

92% OF DOUGLAS COUNTY INMATES ARE RELEASED DIRECTLY TO OUR COMMUNITY. APPROXIMATELY 800 INDIVIDUALS CYCLED IN AND OUT OF JAIL MORE THAN ONCE IN 2008 ALONE, REPRESENTING CLOSE TO HALF OF OUR BOOKINGS.

BECAUSE OF THIS REVOLVING DOOR, WE CONTINUE TO REACH OUT FOR MISSING PARTNERS TO BE REPRESENTED IN THIS CYCLE OF RECIDIVISM:

- ? EXPAND EMPLOYMENT & EDUCATIONAL REPRESENTATION
- ? PHYSICAL HEALTH COMMUNITY
- ? TRANSPORTATION NEEDS
- ? LAW ENFORCEMENT
- ? FAITH-BASED REPRESENTATION
- ? REPRESENTATION FROM OUR FELLOW COUNTY COMMUNITIES

Program Spotlight: Men's Writing Class

Adapted from the Kansas Governor's Arts Award Nomination, Mike Caron

For nearly eight years, Brian Daldorph, a KU English professor, has had a hard time staying out of jail. This soft-spoken poet has volunteered at our facility all that time. He has coaxed an amazing number of inmates to write their first poems with a passion for honest language that reaches lyrical heights few would have imagined could come from men most of society views as unsalvageable thieves, drunks, thugs and druggies.

Brian's jail-based writing program has been featured in the University Daily Kansan and he has authored collections about the incarcerated, to include "Outcasts", "Things Start Happening: Poetry as Power for Inmates", "From the Inside Out: Sonnets", and "Jail Time", an anthology from Britain's inmates, with an edition slated next year compiled of Douglas County inmate writings.

Brian so richly deserves the Kansas Governor's Arts Award in recognition of his enormous investment of creative energy in bringing arts education to our facility's inmates.

*Interested in volunteering
your particular niche or have
questions?*

Contact Mike Caron at

785.830.1055 or

mcaron@douglas-county.com.

Executive

Chair Sheriff Ken McGovern
 County Commissioner Jim Flory
 State Representative and House Minority Leader Paul Davis
 United Way CEO Erika Dvorske
 The Hon. Michael J. Malone
 City of Lawrence Legal Services Director Toni Wheeler

CCCR

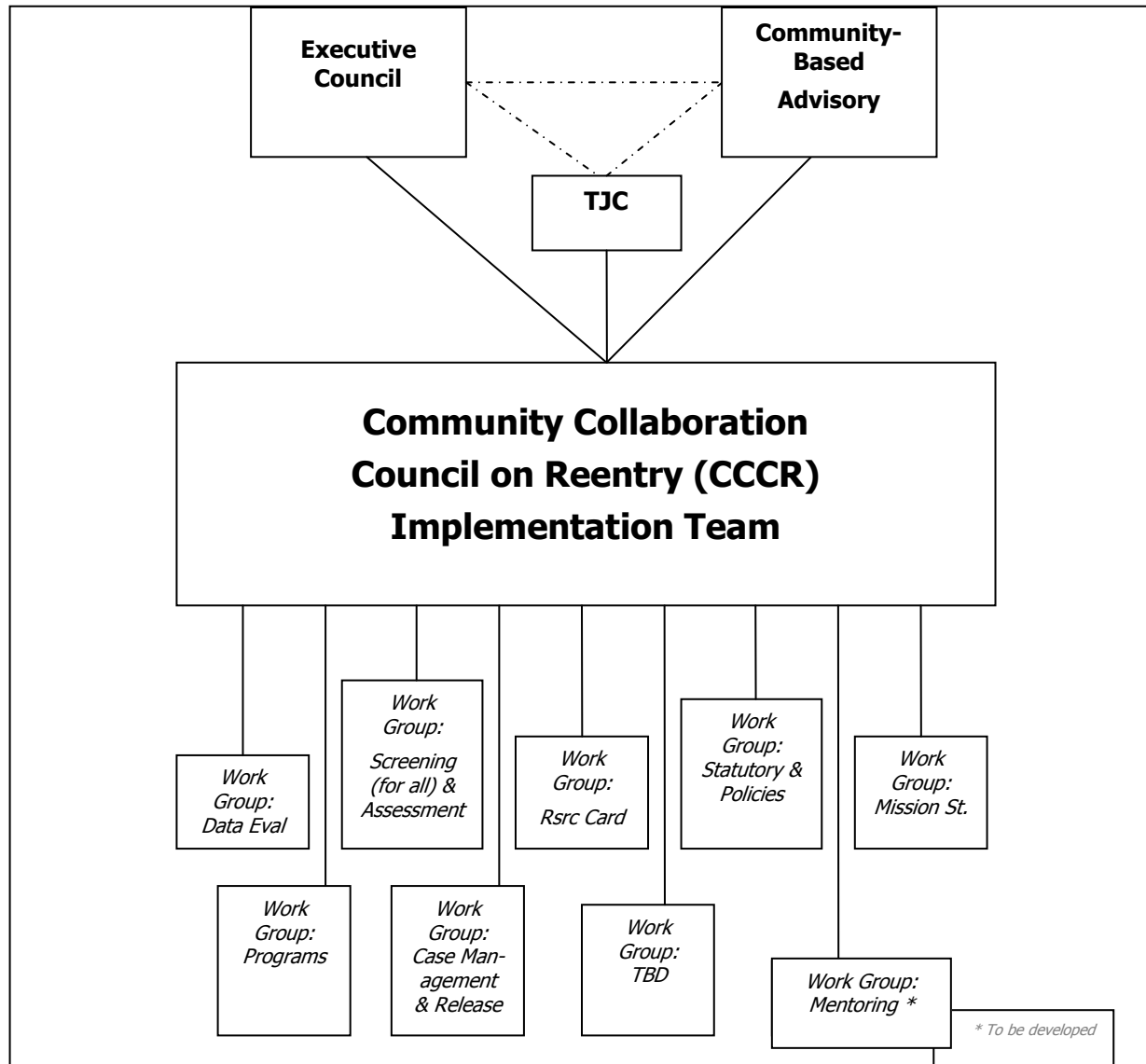
Chair Shannon Murphy- Reentry Dir.
 Kyle Appleby- Corrections Officer II/ Work Release Team Leader
 Jess Bartlett-DCCCA
 Sally Bartlett- Lawrence Community Shelter
 Mike Caron-Programs Director
 Jeannette Collier-Case Manager, ECKAN
 Debbie Ferguson- Community Corrections
 Darcie Holthaus-Deputy
 Kate Heinen-WTCS
 Heather Hoy- Lawrence Douglas County Housing Authority
 Richard Jackson- CEO, ECKAN
 Amy McGowan- District Attorney's Office
 Jim Rumsey- Defense Attorney
 Margaret Severson-University of Kansas School of Social Welfare
 Sharen Steele – High School Completion Program
 Dr. Marciana Vequist – Bert Nash Community Mental Health Center
 Norm White- SRS

Community-Based

Advisory Council

Cris Anderson-USD 497 (Lawrence)
 Sandra Dixon- DCCCA
 Loring Henderson- Lawrence Community Shelter
 Barbara Huppee- Lawrence-Douglas County Housing Authority
 Pat Roach Smith- Bert Nash Community Mental Health Center
 Norman White- SRS
 Tom Kern- Lawrence Chamber of Commerce

**Douglas County, Kansas
 Reentry Initiative Task Force & TJC Organizational Structure**



“Crazy: A Father’s Search Through America’s Mental Health Madness”

—Pete Earley

The first sentence starts “How would you feel, Dad, Mike asked, “if someone you loved killed himself?” Pete Earley, a journalist for the Washington Post and author of *The Hot House: Life Inside Leavenworth Prison*, describes his family’s journey through the ‘mental health madness’ of the criminal justice system after his son suffers a psychotic break at 19.

“Suffering delusions from bipolar disorder, Mike Earley broke into a stranger's home to take a bubble bath and significantly damaged the premises. That Mike's act was viewed as a crime rather than a psychotic episode spurred



his father, veteran journalist Pete Earley ... to investigate the "criminalization of the mentally ill." Earley gains access to the Miami-Dade County jail where guards admit that they routinely beat prisoners. He learns that Deidra Sanbourne, whose 1988 deinstitutionalization was a landmark civil rights case, died after being neglected in a boarding house. A public defender describes how he—not always happily—helps mentally ill clients avoid hospitalization.” (Amazon)

A must read for anyone involved in the criminal justice system.

Care to read “Crazy”? See Shannon Murphy for a copy.

THANKS TO..

The following for donating religious materials:

- ◆ **Mona Schonberg**
- ◆ **Peter Steimle**
- ◆ **Deputy Sandbeck’s mother**
- ◆ **Rabbi Neal Schuster**
- ◆ **Ewan Kaulaity**

Stull United Methodist Sewers, for their donation of hand-crafted teddy bears to the direct-contact child visitation program.

Lawrence-Douglas County Housing Authority Board of Commissioners for allocating 5 vouchers to homeless Reentry participants.

Commissioner Jim Flory, SRS Community Collaborations Coordinator Norm White, KU School of Social Welfare’s Kim Bruns and Operations Lieutenant Wes Houk for their participation in the TJC Cross-Site Kick-Off meetings.

COMMUNITY RESOURCE SPOTLIGHT: THE “T”



Ridership on the Lawrence Transit System’s fixed-route buses increased by 81 percent in September, as compared to the same month last year. The increase is attributed to the launch of a new coordinated route jointly operated with The University of Kansas.

An agreement between the city and the university allows easier access to both bus systems. KU students, faculty and staff can ride the T fixed-route service free by showing a valid KU Card. Riders who show a valid T bus pass or trans-

fer slip can ride the [KU on Wheels](#) buses for free.

A total of 63,963 rides were given on the fixed-route T system in September, compared to 35,276 in September 2008.

(Transit Administrator Robert) Nugent said he is expecting ridership ... to continue to grow as the community learns more about the benefits and ease of using the service.—*Information from City of Lawrence*

Bus passes are available for *indigent* inmates out on job search work release.

New route maps are now available, too.

Contact the work release housing unit or Shannon Murphy for passes and maps.

**Corrections Division
Reentry Program**

**SHANNON MURPHY,
DIRECTOR & TJC
COORDINATOR
3601 E 25TH STREET
LAWRENCE, KS 66046**

**PH: 785.830.1001
FX: 785.830.1085
SMURPHY@DOUGLAS-COUNTY.COM**

WHO DO I CALL?

Main #: 785-830-1000

**Inmate Work Program, Deputy Lana Nelson:
830-1058**

**Booking/Admissions/Releases/Court Information:
830-1036**

**Schedule Evaluations or Direct Contact Child Visits:
830-1001**

**Transports, Lt. Woods:
830-1004**

**Programs & Volunteers, Mike Caron:
830-1055**

**Reentry & TJC Initiative, Shannon Murphy:
830-1001**

**Work Release Employment Information, Sgt Deathe:
830-1019**

**Conceal & Carry Weapons, Sgt Deathe:
830-1019**

**Offender Registration, Sgt Deathe:
830-1019**

**Bert Nash Community Mental Health Ctr:
830-1021**

**Medical
830-1023**

**After Hours Emergencies, Shift Supervisors:
830-1032**

Reentry Mission

To enhance public safety by bringing together the public & private resources of Douglas County to help ex-offenders successfully re-enter their neighborhoods as accountable, self-sufficient & law-abiding citizens.

**Visit us @
www.jailtransition.com &
www.dgso.org**

WHAT IS THE POINT?

Reentry will be implementing the Proxy screening assessment tool during the booking process. The Proxy, a 3 question screening, provides a quick glimpse as to the risk-level the arrestee may present upon return to the community. It is an objective, valid tool that may assist classification with discretionary housing placement decisions and provide Judges' objective risk information regarding bond recommendations. Post-sentence, it will allow Reentry target the higher-risk inmates for more intensive intervention pre- and subsequently post-release. More information about the Proxy may be found on the intranet, under *Reentry Documents*.