



Urban Institute

2000
ANNUAL REPORT



CONTENTS

1 Chairman's Message

3 President's Letter

6 Policy Research

8 Gathering and Analyzing Data

10 Evaluating Programs

12 Public Commentary and Education

15 Center on Labor & Social Policy

16 Center on Nonprofits and Philanthropy

17 Education Policy Center

18 Health Policy Center

19 Income & Benefits Policy Center

20 International Activities Center

21 Justice Policy Center

22 Metropolitan Housing and Communities Policy Center

23 Population Studies Center

24 The Assessing the New Federalism Project

27 Administration

28 Communication

29 Information Technology

30 Financial Statement

31 President's Fund

32 Sponsors

BOARD OF TRUSTEES

Richard B. Fisher, Chairman
Morgan Stanley Dean Witter & Company

Joel L. Fleishman, Vice Chairman
The Atlantic Philanthropic Service Company, Inc.

Katharine Graham, Vice Chairman
The Washington Post Company

Robert D. Reischauer, President
The Urban Institute

Stephanie K. Bell-Rose
The Goldman Sachs Foundation

Michael Beschloss
Historian

Carol Thompson Cole*
The CURTEX Group

John M. Deutch
Massachusetts Institute of Technology

William Gorham*
President-Emeritus, The Urban Institute

Richard C. Green, Jr.
UtiliCorp United

Fernando A. Guerra, M.D.
San Antonio Metropolitan Health District

Robert S. McNamara
Former President, The World Bank

Charles L. Mee, Jr.
Author and Playwright

Robert C. Miller*
Slam Dunk Networks

Lucio Noto*
ExxonMobil Corporation

Hugh B. Price*
National Urban League, Inc.

Sol Price
Founder, The Price Company

Louis A. Simpson
Capital Operations, GEICO Corporation

Robert M. Solow
Massachusetts Institute of Technology

Dick Thornburgh
Kirkpatrick & Lockhart
Former Attorney General of the United States

Judy Woodruff
Cable News Network

* trustees serving partial terms in 2000

LIFE TRUSTEES

Joan T. Bok

Warren E. Buffett

James E. Burke

Joseph A. Califano, Jr.

Marcia L. Carsey

Carol Thompson Cole

William T. Coleman, Jr.

Anthony Downs

George J. W. Goodman

William Gorham

Aileen C. Hernandez

Carla A. Hills

Vernon E. Jordan, Jr.

Bayless A. Manning

Stanley Marcus

David O. Maxwell

Arjay Miller

J. Irwin Miller

Robert C. Miller

Lois D. Rice

William D. Ruckelshaus

Herbert E. Scarf

Charles L. Schultze

William W. Scranton

Cyrus R. Vance

James Vorenberg (deceased 4/00)

Mortimer B. Zuckerman

OFFICERS

Robert D. Reischauer
President

William Gorham
President (through January 2000)

John R. Rogers
Senior Vice President and Chief Financial Officer
(since December 2000)

Craig G. Coelen
Senior Vice President (through May 2000)

Robert G. Planansky
Vice President and Secretary (since November 2000)

H. Morton Grant
Vice President and Treasurer

Kathleen Courier
Vice President for Communication

Brenda P. Meier
Assistant Secretary

ABOUT THE ART

The artwork used throughout this report is that of Judy Byron of Washington, D.C. The originals, life-sized woodcut rubbings, were funded by the North Carolina Artworks for the State Buildings Program, the Rockville (Maryland) Art in Public Places Program, the Mid Atlantic Arts Consortium, the D.C. Commission on the Arts and Humanities, the National Endowment for the Arts, The Service Employees International Union of Washington, D.C., and the Arlington Arts Center. Featuring Ms. Byron's art is part of the Urban Institute's commitment to exhibiting local artists and to exploring their role in community building.

Chairman's Message

RICHARD B. FISHER



Even the most fleeting review of the millenium's first year (or last, depending on one's view of the calendar) confirms that it was remarkable for both the country and the Urban Institute. It would be hard to add meaningfully to the volume of words—rhetorical, legal, and analytical—devoted to the virtual draw that resulted from the presidential election of 2000. Yet even

as the country divided itself over issues of personality and specific policies, there was conspicuous agreement among the contenders and with the public about what ought to be on the national agenda—education, prescription drugs for the elderly, Social Security, Medicare, and tax relief. Clearly, the Institute's research agenda mirrors the nation's priorities more than ever.

This convergence positions the Institute to make practical and perceptive contributions to the debate over what policies should make the next phase of the American experiment work better. The Institute takes up its research questions with objectivity and nonpartisanship, both of which should be particularly valued in the aftermath of the historic presidential election of 2000. This is a satisfying prospect.

For trustees, it is also satisfying that the transition to the Institute's second president has gone smoothly, and that the enduring strength of the Institute remains while new windows of opportunity are being opened. In short, there is every reason to have high hopes for the Institute's future and pride in its many years of public service.

President's Letter

ROBERT D. REISCHAUER



Away for 14 years, I returned early in 2000 to an organization that had maintained all of its strengths while it built new competencies and expanded its vision and reach. Intellectual rigor, objective analysis, policy relevance, collegiality, and an informal but hard-working environment characterize the Institute today just as they did in the mid-1980s. But now the Institute is more

than twice as large, more vibrant, and more outwardly oriented than it was in 1986.

The scope of our work is broader too. Our research on such issues as taxes and criminal justice has expanded, and we have entered into such new policy realms as philanthropy and the not-for-profit sector, education, and community development. The International Activities Center has extended our geographic reach by working with partners abroad on some of the social and governance challenges facing emerging democracies. A single large project—Assessing the New Federalism—draws together multi-disciplinary teams from throughout the Institute to analyze the impacts of the profound changes in the way the nation provides income support and social services to its vulnerable populations. And over the past 14 years the Institute has innovated ways to make its research findings useful and accessible to federal, state, and local policy-makers, the media, policy stakeholders, and the public.

The year 2000 finds Washington with a new political configuration—a single party controls both the White House and Congress. Growing budget surpluses—a state of fiscal grace unimaginable just a few years ago—are projected for the foreseeable future. And a new Decennial Census has begun to illuminate the complexities of the population public policies must serve. Together, these developments promise to break the gridlock that hobbled policy development and stymied rational debate during much of the last two decades.

continued >>>>>



The promise of surpluses means that for the first time in decades policymakers can consider such fundamental policy changes as Social Security reform, Medicare restructuring, a prescription drug benefit for seniors and the disabled, major education initiatives, and large tax cuts. Less monumental but still important decisions will have to be made on such issues as the reauthorization of the 1996 welfare reform legislation, the challenge to communities of re-integrating hundreds of thousands of released prisoners each year, and healthcare for the 43 million who lack health insurance. Also before policymakers are the numerous policy fronts where incremental change can improve public programs' performance.

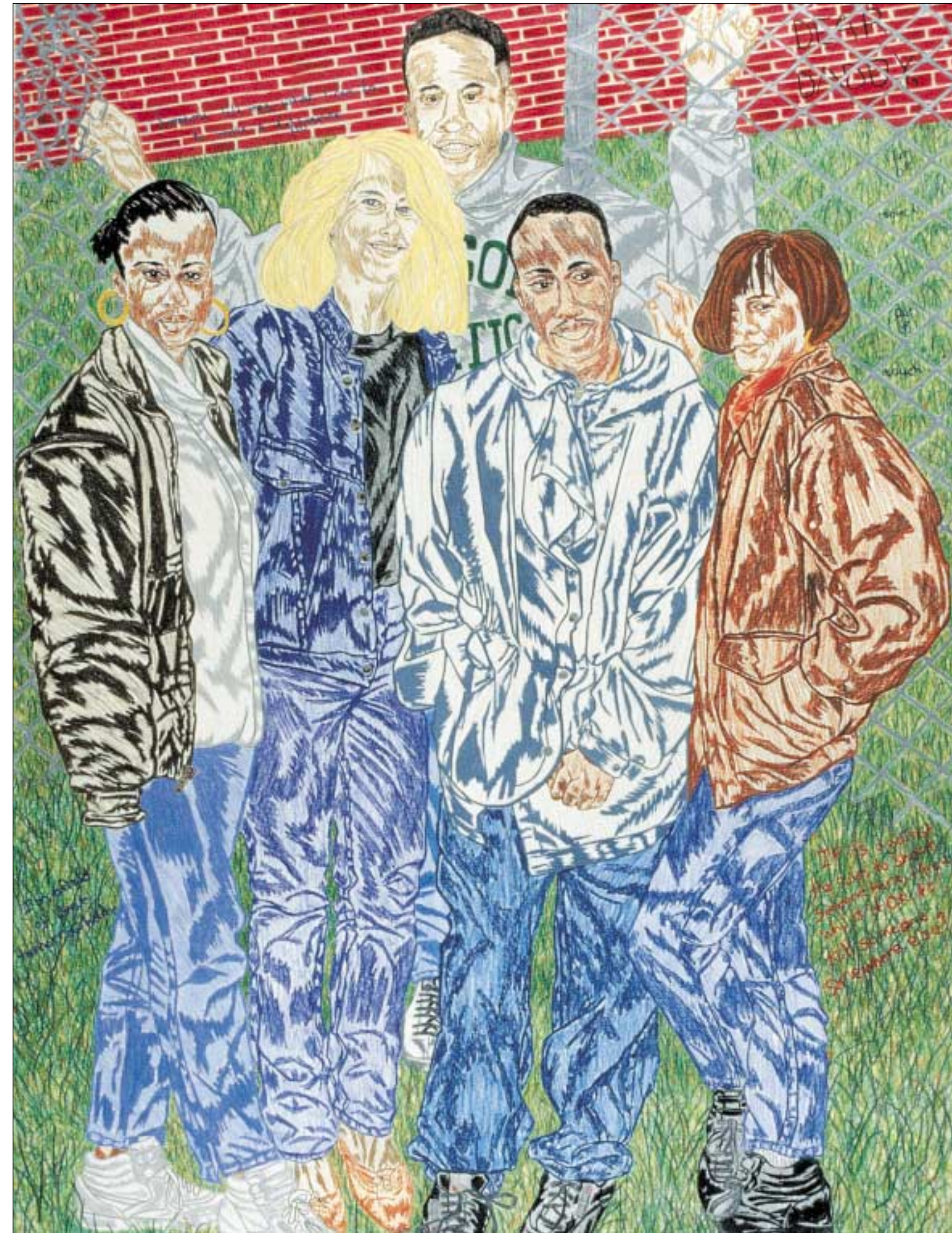
With an extensive knowledge base built up over 32 years, the Urban Institute is uniquely positioned to help lawmakers evaluate policy options and craft solutions to emerging and persistent problems, explain the strengths and weaknesses of policies and proposals to the media, and inform the public about the consequences of the choices facing the nation. With sophisticated models that Institute researchers have developed over decades, we can estimate the quantitative impacts of past and

prospective policy changes. With the experience and sensitivity that come from years of studying the implementation and operation of government programs where they affect real people in states, cities, and communities, Institute researchers can also bring a qualitative perspective to public policy's effects on our society and economy. As policymakers at all levels of government begin to grapple with the challenges of the new century, they increasingly value nonpartisan analysis grounded on objective quantitative and qualitative research—the Urban Institute's hallmark.

For all these reasons, these are exciting times to be entrusted with the helm of a ship whose talented and dedicated crew can help make public policy more responsive to changing national needs and help deepen public understanding. The challenge facing me has been made easier by my predecessor and friend, Bill Gorham, who gave the Institute forward-looking, enlightened leadership for its first 32 years and turned over to me a sound institution headed in the right direction.

THE POLICY ENVIRONMENT HAS CHANGED

	1968	2000
U.S. population	200,706,000	283,511,438
Minimum wage in 2000 dollars	\$7.92	\$5.15
Dow Jones Industrial Average (December 31)	944	10,787
% of families headed by a female with no husband present	11	18 (1999)
% of adult women in paid jobs	40	59
% of federal spending accounted for by discretionary vs. mandatory	66 vs. 34	34.5 vs. 65.5
% of U.S. employed labor force with a college degree	13	26
Average SAT scores of entering college classes	math 533, verbal 541	math 514, verbal 505
GDP per capita (2000 dollars)	\$21,449	\$33,049
National health expenditures as share of GDP	6.1%	13.5% (1998)
Urban % of total population	70	80 (1999)
% of voting age population who voted in the presidential election	61	50
Violent crimes per 100,000 people	298	514 (1999)
Share of total household income received by poorest fifth vs. richest fifth	4.2% vs. 42.8%	3.6% vs 49.4% (1999)



Policy Research



Policy research matters. It can measure effects, compare options, show which stakeholders get the most and least, test conventional wisdom against the facts, reveal trends, and make costs, benefits, and risks explicit. Solid research keeps at least some policy mistakes hypothetical. **At the Urban Institute policy research means:**

Picking the right issues. Determined to make a contribution, we concentrate on issues important to the country and carry out research suited to our particular strengths. We make sure that we aren't duplicating credible work by others. We also seek a balance between short-term and long-term studies, national and local issues, and applied and theoretical work.

Among the broad topics that have passed these tests in recent years are welfare reform, the outlook for the uninsured in the changing healthcare system, and Social Security's future. Among the many issues our agenda expanded to include in 2000 were affirmative action programs' economic impacts, the legal and regulatory framework governing nonprofit advocacy organizations' roles in public policymaking, international comparisons of home care for the elderly, and the multiple challenges posed by prisoners reentering society.

Choosing or creating the right methodologies. Half the challenge of research is finding, adapting, or creating the best tools for the job—those that best account for the evidence and explain it clearly and compellingly. We're known in the research community for taking these challenges very seriously and for innovating, even under tight deadlines.

Quantitative modeling is a core competency of the Urban Institute. Another is revamping research methodologies to broaden their application. Survey design, case studies, and statistical analysis are other basic strengths. Often, we combine methods, bringing multiple perspectives to such complex issues as poverty, educational achievement, or community building.

Assembling the right team. Economists, public policy analysts, lawyers, statisticians, urban planners, demographers, sociologists, political scientists, communications experts, and other specialists make up Urban Institute's staff. With such diverse expertise, we can breach academic boundaries as needed and blend qualitative and quantitative analyses. Equally important, at the Institute teams often stay together to complete many projects, building institutional depth that other organizations can seldom match.

Frequently, we collaborate with outside researchers and other institutions to augment our expertise and capacity. Partnerships with federal, state, and local agencies afford the Institute steady access to timely data and close interaction with those responsible for running government programs throughout the country. A steady stream of guest scholars visits the Institute to speak, share research results, and comment on our work.

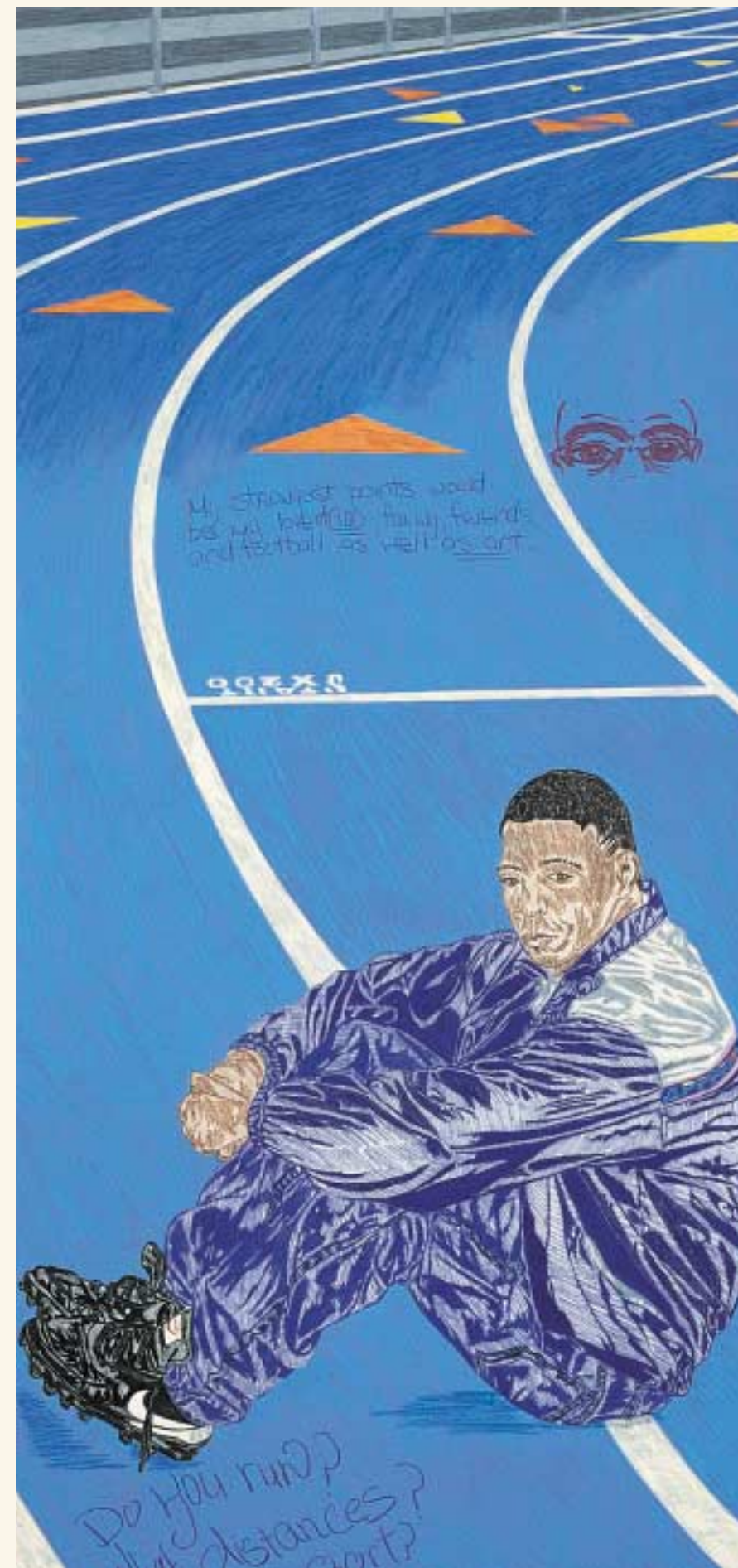
Following the facts wherever they lead. The Institute is committed to analyzing and interpreting facts and numbers without an ideological agenda. We look beyond obvious explanations, but don't ignore them. We make informed judgments about our research findings but take pains to quarantine our personal beliefs when we design and carry out studies. In short, we think what we do is called social science for a reason.

Finding the right words. We publicize results that validate widespread expectations as well as those that prove surprising. We speak the language of experts with experts but put research findings into the context of everyday life for the public. Our senior researchers can match expertise, sophisticated analyses, and facts with others who are immersed daily in the fine points of the policy debate. Since much of our research is by nature highly technical and quantitative, presenting our findings and the discussion in forms accessible to policymakers and the broader public can be a challenge. But practice pays off, and rewarding experiences with on-line and broadcast media create incentives to keep it simple whenever possible.

Subjecting our findings to outside review. Our methods, factual accuracy, and interpretations are all subject to outside review. The Institute's largest projects have technical advisory boards. Smaller ones follow standard academic peer-review procedures. Books published by the Urban Institute Press are reviewed anonymously outside the Institute and revised under the scrutiny of an in-house editorial advisory board.

Reaching the right audiences. We direct our research findings to multiple audiences: policymakers, program administrators, other researchers and university students, the media, nonprofit advocacy organizations, stakeholders in the private sector, and that important segment of the public that follows policy debates through the daily news. Settings range from the working group to the airwaves. Our annual roundtable on the federal budget brings together a few dozen experts on fiscal policy. First Tuesdays, our lunchtime policy seminars, typically draw a crowd of 100, including reporters from major newspapers and wire services. Our monthly radio series with WAMU-FM in Washington airs in 40 cities and reaches millions.

Identifying issues, choosing methodologies, conducting analyses, monitoring quality, and disseminating results are not easy. Few research institutes do all these steps well. But since taking shortcuts at any point can undermine the value of the enterprise, we follow this tough but time-tested regimen.



Gathering and Analyzing Data



Policymakers, other researchers, and the media identify Urban Institute with reliable numbers. We earned that reputation by:

Developing simulation models. Our experience developing, expanding, and fine-tuning models spans nearly three decades. First developed in the Nixon years, our Transfer Income Model—TRIM, now in its third generation—enables researchers to estimate the number of families who qualify for public benefits, the number who actually participate, and the likely impact of participation on household income. In 2000, TRIM3, a speedy point-and-click version of the initial TRIM, was expanded to include child-care subsidies.

In 2000, we also restructured our Dynamic Simulation of Income Model, which was developed in 1973 to project how the U.S. population's composition and income change over long periods. The upgrade makes it easier to compare how different Social Security reform proposals affect families with various demographic and financial profiles.

One model developed at the Institute in 2000 shows how individuals and employers decide whether to purchase healthcare insurance in response to tax policy changes. Other models track income and demographic trends. All of the models developed and modified at the Institute are instrumental in gauging policy proposals' probable impacts on people's lives and costs to government.

Designing and analyzing national surveys. Painstaking to conceptualize, interpret, and repeat, surveys show how public policy plays out for individuals and households. One major survey under our wing is the National Survey of America's Homeless—first conducted in-house in 1987 and taken over by the federal government in 1996. Others include the National Survey of Adolescent Males and the National Survey of America's Families (NSAF).

In 2000, we began reporting data from the second round of NSAF. This survey captures in telephone interviews detailed information on the well-being of nearly 45,000 households, many with children, drawing on such traditional indicators as household income and health insurance coverage and such innovative measures as parents' mental health status and time spent reading to young children. Refining and innovating methodologies—for instance, lending cell phones to participants without telephones so interviews could be conducted consistently—allowed us to boost survey coverage and response rates, especially among the low-income population.

We also shared the survey data on line, where interest groups, other researchers, and students can use integrated software developed by the Institute to construct

customized tables. A third survey quizzed urban households about the roles that arts and culture play in their communities.

Carrying out cost-benefit analyses. We have taken this basic stock-in-trade technique into new realms. In studies of drug courts, for example, we pioneered ways to estimate the value of documented outcomes in terms of incremental operating costs.

Tracking trends. Monitoring demographic shifts and policy-driven changes in behavior and economic status helps ground policy and policy proposals in reality. Among the trends we analyzed in 2000 were the impact of government initiatives and market forces on high school students' college prospects, the well-being of low-income families, the impact of income tax deductions on charitable giving, the erosion of Medicaid managed care, and the resurgence of housing demand in central cities.

Coming up with innovative ways to count vulnerable populations. Debates over how to conduct the 2000 Census—whether only to count heads one by one or to supplement the head count by sampling traditionally undercounted populations and estimating their numbers—made it clear that tallying large populations requires both imagination and the full command of statistical methods.

As one example, thirteen years ago, we conducted the first nationally representative study of urban homelessness that included interviews of homeless people themselves. We also developed the

first probability-based national estimate of users of homeless services. Including soup kitchens in our sampling base, a never-before-tried method of statistically sampling “street people” proved more productive and less expensive than searching streets. Further innovations in our 1996 study, the National Survey of Homeless Assistance Providers and Clients—which showed that the intervening economic boom had not reduced the number of homeless people—allowed us to cover suburban and rural areas, as well as central cities, and many more types of assistance programs.

In 2000, we estimated such vital statistics as the number of children of immigrants in U.S. elementary and secondary schools.

Analyzing the federal budget, revenues, and spending. Our budget and tax analysts took on big questions in 2000: What will the aging of the U.S. population cost the government and the economy? What are the pros and cons of abolishing the estate tax? How much will tax credits for health insurance help reduce the numbers of uninsured? How much federal spending is devoted to children? And how does that sum compare to spending on other age groups?

Mapping data. Taking advantage of new computer software, we are mapping more and more of our data to show such eye-opening patterns as the mismatch between where low-skilled workers live and where jobs they might fill are and the paucity of hospital beds in high-poverty Washington, D.C., neighborhoods. Researchers from throughout the Institute work together to develop new mapping applications.

Managing databases. The Urban Institute has many voluminous databases under its wing. These include crime statistics that we manage for the National Institute of Justice; our 900-variable database of state-level social program and population characteristics; the 45,000-household National Survey of America's Families; data generated for and by our simulation models; state-by-state details on Medicaid spending; and more.

In 2000, we updated our Welfare Rules Database, a repository first developed in 1997 to track state policy changes in the nation's main cash assistance program for families with young children (Temporary Assistance for Needy Families and its forerunner, Aid to Families with Dependent Children). This information has helped policymakers, researchers, and advocacy groups compare policies across states, model alternative program designs, and learn how devolution affects state policy choices.

NCCS Nonprofit Research Database, another of our new databases, is the most comprehensive information source on the nonprofit sector. This joint effort with GuideStar provides financial and descriptive data scanned from the IRS forms of some 230,000 nonprofits, informs the public, and raises voluntary tax-reporting standards for nonprofits, making it easier for them to comply with IRS regulations. This database should revolutionize researchers' and the public's understanding of the nonprofit sector's finances and programs.

Measuring discrimination. Since the late 1980s, we have led development of methodologies for measuring discrimination. With “paired testing,” first widely used by HUD to survey housing market practices in 1979, researchers can compare the treatment of Anglo-American applicants with that of racial and ethnic minorities as they compete for economic opportunities. In new applications developed at the Institute, paired testing measures discrimination in entry-level hiring, urban housing access, home insurance availability, and home mortgage application approvals.

Developing performance management techniques. Our work on “reinventing government” predates by decades the Government Performance and Results Act of 1993. In fact, we can take some credit for the current healthy obsession with accountability and measurement in government service.

Building on years of work on such management techniques as results-based budgeting and “outcomes tracking,” in 2000 we completed a two-year study with the National Conference of State

Legislatures on “governing for results.” Looking especially closely at five states with substantial experience with such initiatives, we came up with recommendations of use to all state agencies, legislatures, and executives.

We are only too aware of the limitations of numbers in policymaking and research: we wrestle with these limitations daily and qualify our research findings accordingly. But the greater worry is the limitations of policy made without numbers—made, that is, without a realistic sense of the size or prevalence of a problem, the resources needed to solve it, or the populations reached or missed by government programs.



Evaluating Programs



The main impetus for starting the Urban Institute in 1968 was to find out how effective the swell of government programs launched in the mid-1960s as part of the “Great Society” were. Today, roughly half our work is still program evaluation, which complements and grounds our more theoretical research and big-picture studies. And more than three decades of this fieldwork has endowed the Institute with unique capacities:

An encyclopedic knowledge of how social services and programs are structured and what results they get.

Our range of analysis extends from nationwide federal initiatives, such as Food Stamps and the school lunch program, to demonstration projects operated in several areas, to faith-based community action programs. The information we develop and organize is banked in reports, databases, and staff expertise. We share it both within the Institute and with government agencies, legislators, nonprofit organizations, business, and the public.

In 2000, we evaluated community policing initiatives, the STOP Block Grant Program (aimed at reducing violence against women), juvenile drug courts, the assault weapons ban, and reforms of federal firearms licensing. This work informed debates over reauthorizing the Crime Control Act.

We completed an evaluation of Medicaid managed care—access, use, and user satisfaction—and began assessments of Head Start, Florida’s statewide school voucher program, and the National Board for Professional Teaching Standard’s teacher certification program, among others.

A sense of which indicators best reveal a program’s or project’s chances of success.

Neighborhood indicators are to community health as vital signs are to personal well-being. Without such fine-tuned measures—whether block-by-block crime statistics, local kindergarten enrollments, or voter registrations—citizens and leaders can’t evaluate general vitality or progress toward goals. Our National Neighborhood Indicators Partnership brings organizations from 12 cities together to develop new ways to assemble and present data, as well as to get community residents to collect and use such data themselves.

We also design and track indicators as part of our research on governing for results, arts and culture as socio-economic forces, and the well-being of children.

A deep understanding of the difficulties of implementing policy.

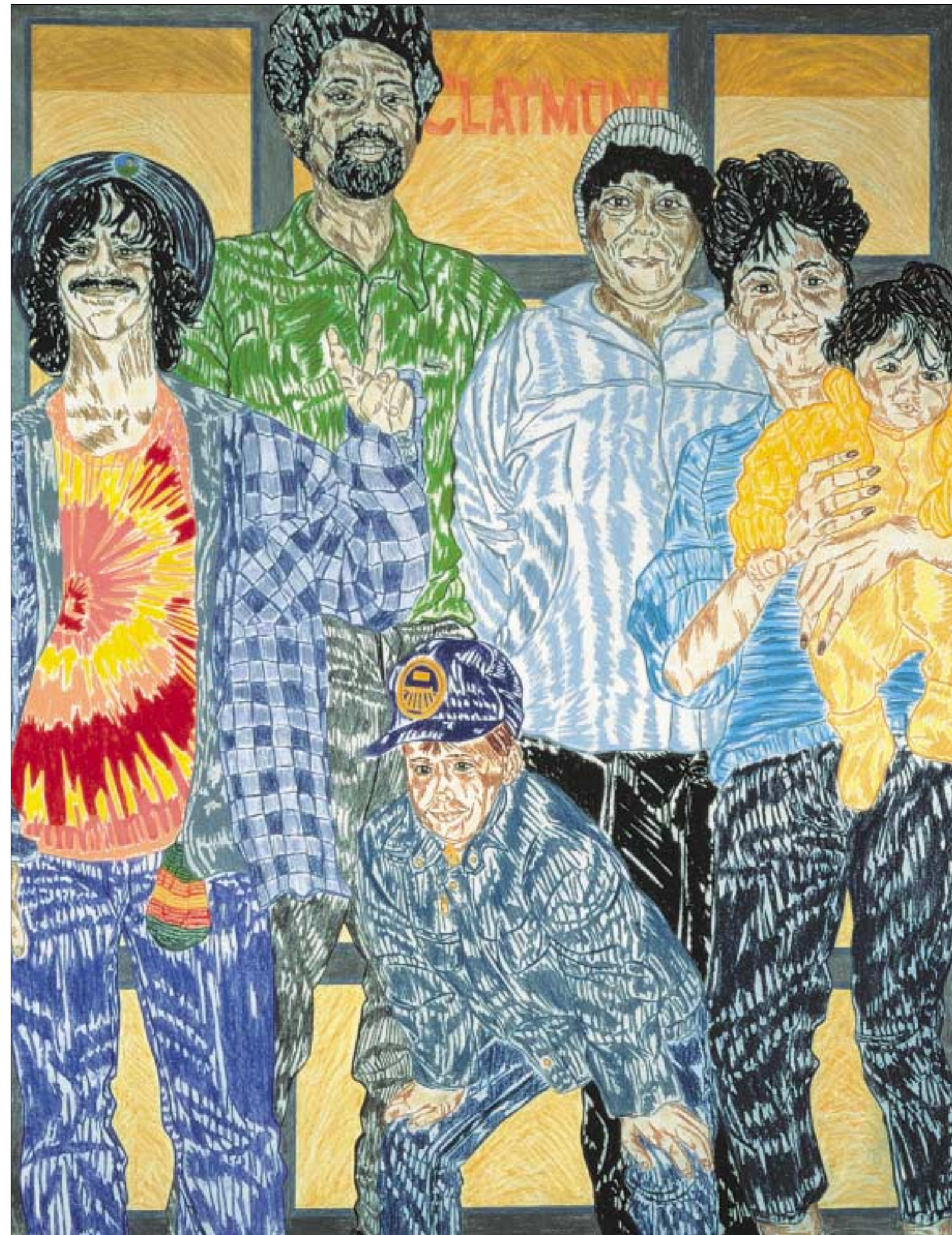
Few collective endeavors are harder than translating political slogans—whether President Johnson’s “War on Poverty” in the 1960s or President Bush’s “Compassionate Conservatism” today—into practical public programs. If the program is well-designed, it still might be under-financed. If it’s properly financed, it

may be poorly run. If it’s well-run, it can outlive its utility. And so on.

Long experience with different types of programs, different types of successes and failures, and different program settings gives the Urban Institute an edge here. We know where to start looking for hidden troubles and assets. We also know how much and what kind of information researchers and policymakers require. After that, our quantitative and analytical skills kick in to get the job done.

In 2000, we evaluated programs in all 50 states. We also worked abroad in 22 countries, helping our counterparts adapt and apply the knowledge and insights we gained at home.

Unusual independence. Only hard-nosed evaluations are worth doing and worth paying for. The objectivity required of researchers conducting such evaluations carries over to the rest of our research projects.



Public Commentary & Education



Many Urban Institute researchers are public intellectuals. Congress invites them to testify, the media asks them for interviews or comments, and their articles and op eds link research at the Institute to the policy debates of the day. Institute staff also work behind the scenes to educate policymakers, the public, and the

press. We help reporters sort through conflicting numbers or confusing program details. We share and explore our findings with other researchers. We brief government agencies and the media on key social policy issues. We publish texts used in university classrooms and by program administrators. We also make our findings available to advocacy groups. **The events and releases highlighted here typify dozens of others that took place in 2000:**

Conference on Medicare Reform. After the report of the National Bipartisan Commission on Medicare's Future was released, we convened policy experts in Washington to look at the findings and at other proposals for restructuring Medicare.

Social Security and Families Conference. Experts met at the Institute to examine proposed Social Security reforms with changing family structures in mind. The goal was to make sure that poverty-prone groups—widows and widowers, divorcees, and single elderly people—are not forgotten. Our primer on the current system's shortcomings summarizes the issue for the public, and a forthcoming UI Press book and conference will help frame the debate for policy analysts and legislators.

Symposium in Los Angeles on Immigrant Integration. With many immigration bills pending before Congress, we joined forces with the Carnegie Endowment, the National Conference of State Legislatures, and the National Immigration Forum to

stage a symposium on integrating newcomers into the American mainstream. Two issues held up to the light for policymakers and analysts were the increasing movement of immigrant populations to second stops that aren't prepared for the influx, and the challenges and opportunities implied by the increasing "Mexicanization" of immigrant flows into the United States.

Release of the National Survey of America's Families. We added new information from the second round of this unique survey—one of few sources of national and state-level information on family well-being—into the public debate over the supports needed by those leaving welfare for work. A key finding of our Snapshots II series was that many families playing by the rules still can't make ends meet—important for policymakers to understand as the reauthorization of the key welfare reform bill approaches.

Regional seminars for healthcare policy-makers and administrators. With foundation support, we briefed state legislators and senior state health officials at three regional conferences on healthcare reform. By sharing with them what their counterparts in neighboring states were doing to expand health insurance coverage, we hoped to jumpstart dialogue and proposals once participants were back on the job.

Media spotlights on election issues. Institute researchers were called on throughout 2000 to put campaign issues into historical and statistical perspective. We commented on sustaining economic growth, managing the surplus, revamping Medicare and Social Security, and other topics for PBS, NBC, ABC, CBS, CNN, C-SPAN, Fox News, MSNBC, and local radio and TV stations across the country. We were also quoted in *Time*, *Newsweek*, *Business Week*, the *New York Times*, the *Washington Post*, *National Journal*, the *International Herald Tribune*, the *Wall Street Journal*, and dozens of other dailies and weeklies.

Forum on what the District of Columbia needs from the new administration. On election day, we convened a forum on D.C.'s priorities for the new administration. Invited community and business leaders, activists, policy analysts, and the head of the federally mandated D.C. Financial Control Board butted heads but also came up with an impressive "to do" list for the next president. The event was moderated by radio station WAMU's "D.C. Politics Hour" co-host Mark Plotkin.

Seminar on the Clinton Legacy. On the eve of President Clinton's departure, we invited other researchers and the media to the Institute to discuss the accom-

plishments and missed opportunities of the past eight years. Our presentations on the economy and the budget, welfare reform, education, and healthcare covered both milestone events and trends, outlining a strong—if mixed—legacy for the 42nd President.

Conferences in Eastern Europe on decentralization. In Macedonia and Hungary, our International Activities Center presented its USAID-sponsored survey of fiscal decentralization initiatives in Eastern Europe during the 1990s. The educators, policy analysts, and trainers invited from these countries are expected to apply and disseminate practical knowledge gained on municipal finance, power-sharing among various levels of government, and more. Much of the material reviewed at the conferences is now available in a handbook and CD-ROM package.

Choice award to *The Encyclopedia of Taxation and Tax Policy*. An Urban Institute Press book was named by *Choice* magazine as an "Outstanding Academic Title" of 2000. Some 25,000 books are nominated and just over 600 are picked for "their excellence in scholarship and presentation, their significance... to the field, and their value as an important—often the first—treatment of a specific subject."

Testimony on Capitol Hill. Our researchers testified often in 2000. We accepted invitations from the Senate Finance Committee to discuss Medicare reform. The House Subcommittees on Health and Environment and on Oversight and Investigations, as well as the Committee on Veteran's Affairs, asked us to comment on liability for medical errors. The House Committee on

Workplace and Education invited our comments on labor shortages. For other committees, we testified on using general funds to pay for entitlements, declining participation in the Food Stamp program, flexible funding for child welfare services, and more.

For Work Well Done

Several Institute researchers were honored for career achievements this year:

Two Metro Center researchers received national awards. **Mary Kopczynski** won the Louis Brownlow Award for the best Public Administration Review article written by a practitioner.

Harry Hatry received the Association of Government Accountants' 50th anniversary award for outstanding service promoting government accountability.

Joshua Weiner of the Health Policy Center was named R.M. Gibson Visiting Fellow of the Australian Association of Gerontology.

In the Center on Nonprofits and Philanthropy, **Mark Hager** won the Gabriel Rudney Award for best dissertation from the Association for Research on Nonprofits and Voluntary Action. Center director **Elizabeth Boris** was named one of the 50 most influential leaders in the nonprofit sector by the *Nonprofit Times* for the second year in a row.

>>> Center on Labor and Social Policy

The exceptionally low unemployment rate, welfare reform's emphasis on work, and changes in family structure invite Americans to rethink what roles work and supportive services should play for low-skilled and vulnerable populations. We have to pose hard questions: Are training and employment programs keeping former welfare recipients' heads above water? Will the hardest to employ ever find work? Which work supports help struggling families the most? If a vibrant economy alone isn't enough, what additional support services are the best shields against homelessness, substance abuse, and domestic violence? And what types of programs prepare young adults and welfare leavers for work? The Urban Institute's Center on Labor and Social Policy grapples with these and related policy issues.

HIGHLIGHTS OF 2000 | We developed new first-in-a-decade estimates of the nation's homeless population. Point-in-time homelessness rates rose overall, we found. More important, we also identified a much larger pool of very poor people who experienced a spell of homelessness at some time during a year.

Our widely publicized review of affirmative action programs showed, contrary to accepted wisdom, that they have little or no negative economic effect.

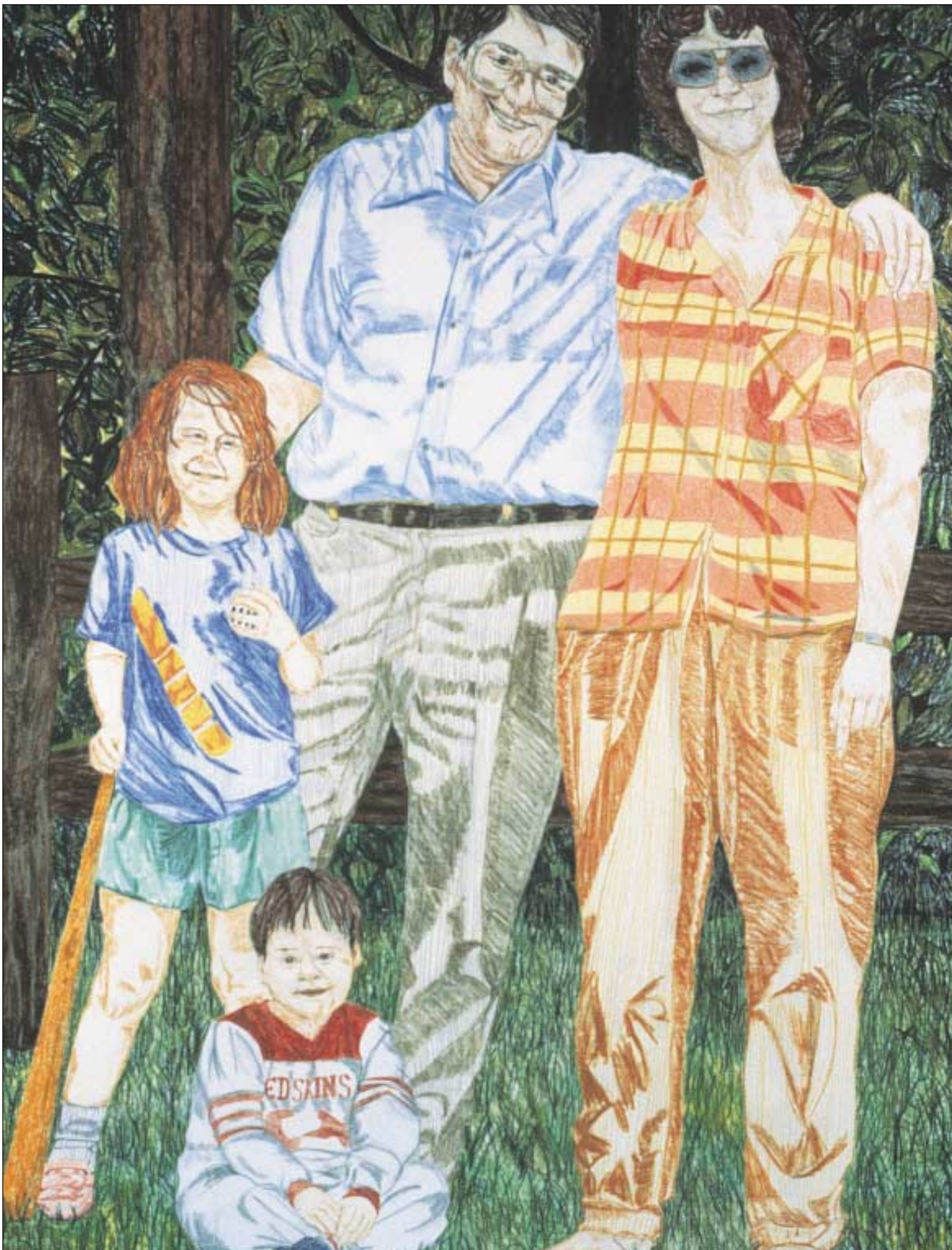
Our analysis of low-wage labor markets revealed that large metropolitan areas have provided enough jobs for welfare recipients without taking jobs from other less-educated workers or lowering their wages. We also studied three intertwined influences that affect how low-wage workers fare in the labor force: prospects for advancement, job turnover, and the networking opportunities.

This year, we laid ambitious groundwork for synthesizing data on employers and employees. Preliminary findings: employers are quite willing to hire welfare-to-workers, high turnover in this group traces back to social and family factors rather than skills deficits, and firms within the same industry vary dramatically in terms of wages paid, kinds of workers hired, and productivity rates achieved.

STAFF | **Robert Lerman** (Center Director) | Laudan Aron | Jen Bernstein | Elias Blake | Martha Burt | Lynne Fender | Pamela Holcomb | Robin Koralek | Julia Lane | Signe-Mary McKernan | Kelly Mikelson | Demetra Smith Nightingale | Carolyn O'Brien | Neal Parikh | Nancy Pindus | Caroline Ratcliffe | Stephanie Riegg | Stefanie Schmidt | Patrick Sharkey | Terri Thompson | Ashley Van Ness | Douglas Wissoker | Mildred Woodhouse | Anita Zuberi | Janine Zweig

Selected Publications

- >> *Assessing Affirmative Action*, by H. Holzer and D. Neumark.
- >> "Father Involvement with Their Nonmarital Children: Patterns, Determinants, and Effects on Their Earnings," by R. Lerman with E. Sorensen, in *Marriage and Family Review*.
- >> "Jobs Flows, Worker Flows, and Churning," by J. Lane with S. Burgess and D. Stevens, in *Journal of Labor Economics*.
- >> *The Low Wage Labor Market: Challenges and Opportunities for Self-Sufficiency*, edited by D.S. Nightingale.
- >> *2000 Report: Evaluation of the STOP Block Grants to Combat Violence Against Women Under the Violence Against Women Act of 1994*, by M. Burt, J. Zweig, K. Schlichter, S. Kanya, B. Katz, N. Miller, S. Keilitz, and A. Harrell.



>>> Center on Nonprofits and Philanthropy

Selected Publications

- >> *Structuring the Inquiry into Advocacy*, edited by E. Reid.
- >> *Extending the Charitable Deduction to Nonitemizers: Policy Issues and Options*, by E. Steuerle, J. Cordes, and J. O'Hare.
- >> *Poverty in the District of Columbia—Then and Now*, by C. De Vita, E. Twombly, and C. Manjarrez.
- >> *Fundraising and Administrative Costs: A Comparison of IRS Form 990, Audited Financial Statements Report, and Professional Fundraiser Registration Data*, by J. Cordes and S. Wilson.
- >> "Financial Measures in Nonprofit Research: Comparing IRS 990 Return and Audited Financial Statement Data," by K. Froelich, T. Knoepfe, and T. Pollak, in *Nonprofit and Voluntary Sector Quarterly*.
- >> "How Much Do Non-Governmental Organizations Matter? Differing Views from Different Classification Systems," by L. Lampkin and N. Stengel, in *Nonprofit and Voluntary Sector Quarterly Conference Proceedings*.

Nonprofit organizations—from art museums and universities to environmental groups and community service agencies—invite civic participation in ways no other sector of society does. The Urban Institute's Center on Nonprofits and Philanthropy tracks and analyzes how these organizations are growing and changing and how they are managed and financed. It also develops, maintains, and shares a voluminous database on more than 200,000 of the nation's nonprofits.

HIGHLIGHTS OF 2000 | Work completed on the nonprofit database—housed in our National Center for Charitable Statistics—makes it the nation's largest and most comprehensive resource on nonprofit organizations, with some 400 dimensions identified for each organization. Another ambitious project finished this year is our tax model on charitable giving. We use it to analyze and compare how various tax proposals might affect charitable donations and government revenue.

In 2000, we launched a new seminar series to explore the legal and regulatory framework governing nonprofit advocacy. We are trying to find out how this framework affects nonprofits' involvement in public education, lobbying, and election-related activities. We also held a conference to discuss perspectives on the property tax exemption for nonprofits. The ideas generated at this conference will lead to a path-breaking book on the topic.

We are also taking advantage of new technology to display our research results in new ways. For the District of Columbia and four other cities, we produced maps showing the location of community organizations and such local social and demographic characteristics as the number of children living in poverty. Such maps help grant-makers and policymakers see both community capacity and potential needs.

STAFF | Elizabeth Boris (Center Director) | Linda Lampkin (NCCS Program Director) | Carol De Vita | Emily Finnin | Corey Fleming | Marie Gantz | Nadine Garrick | Kendall Golladay | Perri Gottlieb | Jeff Krehely | Carlos Manjarrez | Maria Montilla | Rachel Mosher-Williams | Francie Ostrower | Pho Palmer | Tom Pollak | Elizabeth Reid | Sheryl Romeo | Carole Rosenstein | Elizabeth Rowland | Stephanie Scott-Melnyk | Nicholas Stengel | Stephanie Stillman | Eric Twombly | Eric Wallner | Angie Weatherwax | Sarah Wilson

>>> Education Policy Center

At the top of the nation's policy agenda, education reform wears many faces. The Urban Institute's Education Policy Center studies school vouchers, teacher certification, recruitment, after-school programs, educational opportunities for immigrant students, and achievement standards. We also evaluate major national programs. Three under study now are Head Start, the National Board for Professional Teaching Standards, and Comprehensive School Reform Models.

HIGHLIGHTS OF 2000 | We conducted the first systematic analysis of the national E-Rate program, created in 1996 to wire the nation's schools and libraries for the 21st century. Looking closely at whether the program helped close the "digital divide," we found that public schools got the lion's share of the \$4 billion available and that the poorest districts got the most funding per student. Larger districts also appear to have taken more advantage than smaller districts have of the E-Rate program.

With the Population Studies Center, EPC unveiled a statistical portrait of immigrant teenagers in the United States. An examination of the organization of secondary schools showed how these schools failed to meet the needs of immigrant students who, as a result, are overlooked and underserved.

We also launched an evaluation of Florida's bellwether voucher program in collaboration with researchers from Princeton and the University of Florida. We spent the year collecting baseline data from teachers, schools, and school districts on school programs and practices, resource allocation, staffing patterns, and students' background and performance. We will continue gathering data for at least another year and start examining how public schools respond to whatever competitive pressures emanate from the voucher program. Then we will assess vouchers' effects on student performance.

STAFF | Jane Hannaway (Center Director) | Alissa Anderson | Karen Callahan | Duncan Chaplin | Beatriz Chu Clewell | Laurie Forcier | Dan Goldhaber | LaTasha Holloway | Sarah Manes | Shannon McKay | Kristen Olson | David Perry | Michael Puma | Jacqueline Raphael | Jorge Ruiz-de-Velasco | Nancy Sharkey | Irene Steward | Dulari Tahbildar



Selected Publications

- >> *Overlooked and Underserved: Immigrant Students in U.S. Secondary Schools*, by J. Ruiz-de-Velasco and M. Fix, with B. Clewell.
- >> *E-Rate and the Digital Divide: A Preliminary Analysis from the Integrated Studies of Educational Technology*, by M. Puma, D. Chaplin, and A. Pape, for the U.S. Department of Education.
- >> *Does Teacher Certification Matter? High School Teacher Certification Status and Student Achievement*, by D. Goldhaber with D. Brewer, for Educational Evaluation and Policy Analysis.
- >> *Review of Teacher Recruitment Programs*, by B. Clewell with K. Darke, L. Forcier, and S. Manes, for the U.S. Department of Education.
- >> *Standards-Based Reform at the School District Level: Findings from a National Survey and Case Studies*, by J. Hannaway with B. Turnbull, for the Department of Education.



>>> Health Policy Center



Selected Publications

- >> “Why Does the Number of Uninsured Americans Continue to Grow?” by J. Holahan and J. Kim, in *Health Affairs*.
- >> “Commercial Health Plan Participation in Medicaid Managed Care,” by T. Coughlin, S. Long, and J. Holahan, in *Inquiry*.
- >> “Insurance Coverage of Welfare Leavers,” by B. Garrett, in *Health Affairs*.
- >> *An Assessment of the President’s Proposal to Modernize and Strengthen Medicare*, by M. Moon, Commonwealth Fund paper.
- >> *Extending Medicaid to Parents: An Incremental Strategy for Reducing the Number of Uninsured*, by L. Dubay, G. Kenney, and S. Zuckerman.
- >> *Health Care for the Poor and Uninsured after a Public Hospital’s Closure or Conversion*, by R. Bovbjerg, J. Marsteller, and F. Ullman.
- >> “Disability Trends Among the Elderly and Implications for the Future,” by T. Waidmann and K. Liu, in *Journal of Gerontology*.

The dynamics of the healthcare market and government policy affect how much care costs, who pays the bills, and who goes without care. Urban Institute’s Health Policy Center examines Medicare, Medicaid, and private coverage with these three fundamental concerns in mind.

HIGHLIGHTS OF 2000 | This year our contribution to the knowledge base needed to make sound healthcare policy was matched by methodological advances that should help clarify the national debate. Published in *Health Affairs*, analysis of survey data from the Urban Institute’s 1999 National Survey of America’s Families showed the early impacts of state initiatives to insure more children and of higher rates of employer coverage owing to the exuberant economy. New modeling advances we made also allowed us to begin figuring out how tax credits for health insurance will influence the number of Americans with employer-sponsored or individual coverage.

To understand how the State Children’s Health Insurance Program works in practice, we carried out on-site studies. In 18 states, we looked at program design, outreach, cost-sharing, benefits packages, the “crowd out” effect, and the use of managed care.

With more and more participants turning to managed care within Medicaid, we grappled with why states have problems attracting and keeping health plans. Looking closely at the managed care market in six cities, we found the key issues to be difficulty in negotiating with providers and low payment rates coupled with administrative burdens.

STAFF | **John Holahan** (Center Director) | **Marilyn Moon** (Senior Fellow) | Ruth Almeida | Cristina Baseggio | Linda Blumberg | Randall Bovbjerg | Niall Brennan | Brian Bruen | Karen Bryant | James Celestin | Julie Chesky | Teresa Coughlin | Amy Davidoff | Marianna Diggs | Lisa Dubay | Bowen Garrett | Emily Greenman | Stuart Guterman | Jack Hadley | Jennifer Haley | Ian Hill | Heidi Kapustka | Stephanie Kendall | Genevieve Kenney | Leighton Ku | Korbin Liu | Amanda Lockshin | Sharon Long | Amy Westpfahl Lutzky | Stephanie Maxwell | Carey McGiiliard | Stacey McMorro | Len Nichols | Barbara Ormond | Mary Pohl | Nirmala Ramalingam | Laurie Smith | Brenda Spillman | Matthew Storeygard | Shinobu Suzuki | Jane Tilly | Frank Ullman | Timothy Waidmann | Joshua Wiener | Alshadye Yemane | Angela Yip | Stephen Zuckerman

>>> Income and Benefits Policy Center

How well off American families are depends partly on their tax burdens, employee benefits, and pensions. Food stamps, childcare subsidies, or other “income supports” can figure into the picture too. The Urban Institute’s Income and Benefits Policy Center studies the impacts of these determinants of income and well-being on families of all kinds. But we focus especially closely on vulnerable populations—those receiving or leaving welfare, the elderly, those with young children, and families facing daunting obstacles to work.

HIGHLIGHTS OF 2000 | Examining how the current retirement system works for various family types, we updated two models. One simulates the household effects of current and proposed rules governing Social Security eligibility and pay-outs. The other, designed for the Social Security Administration, helps assess alternative social security benefit structures. Related studies addressed the retirement decisions of couples and individuals.

Our tax specialists analyzed how state tax systems treat low-income families. We also compared the impacts of various proposals to revamp the federal income system. Training a broad lens on tax expenditure growth, we pointed out the political ease and financial pitfalls of funding policy initiatives through tax cuts instead of spending programs.

Tracking welfare reform in its fourth year, we looked mostly at states—where the action is. We monitored states’ Temporary Assistance for Needy Families policies and explored why food stamp use has dropped off in reform’s wake. In the District of Columbia, we traced the economic paths of those who left the welfare rolls.

Looking at child support and fragile families, we found that support payments are more important than ever to children’s security and that compliance with court orders to pay is on the rise. But researchers also found that the personal challenges that keep many non-custodial parents from paying are hard to fix.

STAFF | **Sheila Zedlewski** (Center Director) | **Leonard Burman** (Senior Fellow) | **Eric Toder** (Senior Fellow) | Gregory Acs | Donald Alderson | Stephen Bell | Jillian Berk | Brenda Brown | Melissa Favreault | Linda Giannarelli | Amelia Gruber | Adam Jacobs | Richard Johnson | Heather Koball | Pamela Loprest | Elaine Maag | Sandra Nelson | Helen Oliver | Kevin Perese | Katherin Ross Phillips | Theresa Plummer | Desiree Principe | Tracy Roberts | Diane Lim Rogers | Gretchen Rowe | Frank Sammartino | Karen Smith | Elaine Sorensen | Todor Stavrev | Cori Uccello | Laura Wheaton | David Wittenburg | Romina Woldemariam | Chava Zibman

Selected Publications

- >> *Making Sure of Where We Started: State Employment and Training Systems for Welfare Recipients*, by S. Bell.
- >> “Out-of-Pocket Health Care Costs Among Older Americans,” by R. Johnson and S. Crystal, in *Journals of Gerontology: Social Sciences*.
- >> *Redirecting Welfare Policy Toward Building Strong Families*, by E. Sorensen, R. Mincy, and A. Halpern.
- >> *Economic Effects of Demographic Changes*, by E. Toder, D. Rogers, and L. Jones.
- >> “Tax Cuts or Spending: Does It Make a Difference?” by E. Toder, in *National Tax Journal*.



>>> International Activities Center

Selected Publications

- >> *Decentralization in Central and Eastern Europe*, by T. Levitas, J. Pige, J. Kalman, V. Kamenickova, and G. Peterson, for USAID.
- >> *Intergovernmental Fiscal Relations in Eastern Europe: A Sourcebook for Policy Analysts and Trainers*, by F. Conway, B. Desilets, P. Epstein, and J. Pige, for USAID.
- >> *Social Safety Nets at the Local Level in Russia: Case Studies of Four Cities*, by the International Activities Center staff.
- >> *Poland: Housing Finance at the Millennium*, by S. Merrill, M. Lea, D. Diamond, and K. Temkin, for Price Waterhouse Cooper LLP.
- >> *Municipal Real Property Asset Management: An Application of Private Sector Practices*, by O. Kaganova, R. Nayyar-Stone, and G. Peterson, for the World Bank.

The Urban Institute's International Activities Center provides research services and technical assistance to new democracies in Eastern Europe, the former Soviet Union, Latin America, and Asia. We help others adapt and apply what we have learned about social sector reform, decentralization, the development of civil society, housing policy, and public finance.

HIGHLIGHTS OF 2000 | In Armenia, we have developed a much needed program for those still stuck in temporary shelter after losing their homes in the 1988 earthquake. As noted in a front-page story in the *Washington Post*, this pilot initiative allows participating households to move into permanent housing available on the market for a fraction of what it costs to build new homes.

In Albania, we incubated and nurtured a first-of-its-kind dialog between central and local governments on decentralization issues. One welcome result has been a new law that defines the function and structure of local government, the terms of intergovernmental relations, and financing mechanisms. Another has been amendments to laws covering local government property, taxes, and revenues, changes that make it easier for local governments to operate independent of central government control and to respond better to local concerns.

In Russia, with our Moscow-based partner, the Institute for Urban Economics, we are working to upgrade social service delivery in several cities. The challenges are consolidating a mishmash of subsidies into more effective assistance, streamlining program administration, and channeling assistance through community organizations.

STAFF | Jeff Telgarsky (Center Director) | Raymond Struyk (Senior Fellow) | Steven Anlian | Louisa Baghdasarian | Brien Desilets | Tamara Canty | Francis Conway | Sam Coxson | John Doane | Peter Epstein | Jerome Gallagher | Renee Hendley | Olga Kaganova | Harold Katsura | Bart Kennedy | Rebecca Lawrence | Katharine Mark | Edward Mazuroski | Maris Mikelsons | Gretchen Mikeska | Ritu Nayyar-Stone | Juliana Pige | Sarah Polen | Carol Rabenhorst | Katie Reikofski | Clare Romanik | Eduardo Serrano | Martha Sickles | Malcolm Simpson | Michael Stevens | Steven Swanson | Mary Tomlinson | Charles Undeland | Makiko Ueno | Lee Walton



>>> Justice Policy Center

The national dialog on crime, justice, and community safety often gets stalled by emotional rhetoric. To help keep the debate on productive ground, the Urban Institute created the Justice Policy Center in 2000 to supply the public and policymakers with nonpartisan perspectives and fresh data. Building on the Institute's Law and Behavior Program, we manage the federal justice system's massive national databases for the Bureau of Justice Statistics of the U.S. Department of Justice. New initiatives on prisoner re-entry into mainstream society are under way, and we are also expanding our studies of juvenile courts.

HIGHLIGHTS OF 2000 | The new center sponsored two kick-off events. One brought leading academics and practitioners to Washington to discuss prisoner re-entry—new data, recent policy changes, state variations in policy and practice, the underlying challenges, and research findings and gaps. The second event was a national forum on crime's decline. Two dozen national experts—many of them co-authors of *The Crime Drop in America*, a new Cambridge University Press volume—met to sift through the evidence on the relationship between the crime rate and various social, demographic, economic, and political forces.

At sites in Minnesota, Michigan, and Massachusetts, we began testing the hypothesis that strong judicial oversight of perpetrators of domestic violence can reduce the incidence of repeat offenses, increase the offender's accountability and the justice system's, and better protect victims. Results, expected in 2003, should help policymakers and justice officials determine whether combining the court's vigil with graduated sanctions for offenders and comprehensive services for victims works.

Another line of inquiry for the Justice Center involves the question, How can drug courts be adapted to work for juvenile offenders? To find out, we are first analyzing the structures and processes used in drug courts for juveniles today. Later, in scattered cities from Orlando to Missoula, we will evaluate the effects of judicially supervised treatment on the subsequent drug use and criminal activity of youth.

STAFF | Adele V. Harrell (Center Director) | Jeremy Travis (Senior Fellow) | Peter Reuter (Visiting Scholar) | William Adams | Jay Arwood (deceased 12/00) | Avinash Bhati | Nicole Brewer | Janeen Buck | Jeffrey Butts | Dionne Davis | Christine DeStefano | Glenn Dubin | Caterina Gouvis | Alexa Hirst | Erika Jackson | Calvin Johnson | Christopher Koper | Kamala Mallik Kane | O.J. Mitchell | Gretchen Moore | Lisa Newmark | Barbara Parthasarathy | John Roman | Jake Rosenfeld | Shelli Rossman | Amy Solomon | Christy Visher | Michelle Waul | Ruth White | David Williams | Laura Winterfield



Selected Publications

- >> *Violence in the District of Columbia: Patterns from 1999*, by C. Gouvis, C. Johnson, C. DeStefano, and A. Solomon.
- >> *Offenders Returning to Federal Prison, 1987–1996*, by W. Sabol, W. Adams, B. Parthasarathy, and Y. Yuan, for the Department of Justice.
- >> "Brick by Brick: Dismantling the Border Between Juvenile and Adult Justice," by J. Butts and O. Mitchell, in *Criminal Justice 2000*, National Institute of Justice.
- >> *Specialized Felony Domestic Violence Courts: Lessons on Implementation and Impacts from the King County Experience*, by L. Newmark and K. Diffily.
- >> *National Evaluation of the COPS Program*, by J. Roth, J. Ryan, S. Gaffigan, C. Koper, M. Moore, J. Roehl, C. Johnson, G. Moore, R. White, M. Buerger, E. Langston, and D. Thacher, for the National Institute of Justice.

>>> Metropolitan Housing and Communities Policy Center

Selected Publications

- >> *Assessment of Recent Innovations in the Secondary Market to Serve Low- and Moderate-Income Homebuyers*, by K. Temkin, J. Johnson, and C. Calhoun.
- >> *Earning a Living Wage: Metro Differences in Opportunity and Inequality for Adult Males with Low Education Levels*, by J. Foster-Bey.
- >> *A Model for Community-Based Workshops on Performance Measurement*, by G. Barbour, N. Geha, H. Hatry, M. Kopczynski, D. Okubo, A. Paul, and K. Weidman, for the National Civic League.
- >> *Section 8 Mobility and Neighborhood Health*, by M. Turner, S. Popkin, and M. Cunningham
- >> *Housing Agency Responses to Federal Deregulation: A Baseline Report on HUD's Moving to Work Demonstration*, by M. Abravanel, M. Turner, and R. Smith.

Location matters. Communities where Americans live—housing developments, neighborhoods, cities, and suburbs—profoundly affect their quality of life and access to opportunities. The Urban Institute's Metro Center analyzes the varied forces shaping urban communities, especially the roles of federal, state, and local policies.

HIGHLIGHTS OF 2000 | At the federal level, we helped the U.S. Department of Housing and Urban Development (HUD) strengthen the support services that residents of severely distressed public housing developments receive when the buildings they live in are demolished or renovated. And we continued to help HUD assess its efforts to encourage low-income families to use federal housing vouchers to move to better neighborhoods. These studies will track families making such moves and measure any changes in housing, neighborhood quality, employment, income, education, and overall well-being that may result.

In 33 states, Metro Center researchers studied emerging efforts to “manage for results” and developed recommendations for making strategic planning and performance-based management work better at the state level. We also conducted a first-of-its-kind survey of how urban Americans participate in artistic and cultural activities. This survey showed that traditional images of cultural participation—visiting an art museum or attending a symphony concert, for example—are far too narrow to capture the many roles that arts and culture play in the life of urban communities.

We also worked in our hometown. With other Urban Institute research centers, the Metro Center conducted a wide range of studies on the District of Columbia and its suburbs and launched a D.C. policy forum series to share findings with local policymakers and community activists.

STAFF | Margery Austin Turner (Center Director) | Martin Abravanel | Julie Adams | Claudia Aranda | Beata Bednarz | Jeanette Bradley | Margaret Browne | Patrick Corvington | Mary Cunningham | Michelle DeLair | Daryl Dyer | Kadija Ferryman | John Foster-Bey | Stefan Freiberg | Erin Godfrey | Aaron Graham | Laura Harris | Harry Hatry | Chris Hayes | Diane Hendricks | Maria-Rosario Jackson | Jennifer Johnson | Davis Kim | Thomas Kingsley | Mary Kopczynski | Diane Levy | Elaine Morley | Kathy Pettit | Susan Popkin | Lynette Rawlings | Robin Redford | Elise Richer | Mark Rubin | Noah Sawyer | Jeffrey Shumway | Christopher Snow | Robin Smith | Peter Tatian | Ken Temkin | Shawnise Thompson | Allen Turner | Mark Turner | Avis Vidal | Elisa Vinson | Christopher Walker | Tim Ware



>>> Population Studies Center

Shifts in the economy and gender roles, improvements in healthcare technology, and new policies and programs influence population growth and change. The Urban Institute's Population Studies Center scrutinizes these forces to describe how and why the U.S. population is continually changing. Our current research looks at immigration, mortality trends, sexual and reproductive health, adolescent risk-taking, childcare, and child welfare.

HIGHLIGHTS OF 2000 | In New York and Los Angeles, we surveyed 3400 immigrant households to gauge their economic mobility, health, and well-being in the wake of welfare reform's restrictions on services and financial assistance to these newcomers. Our findings represent a major new source of information on today's U.S. immigrant population amid rapid policy change.

In 2000, we issued three timely reports on risks taken by teens. The first—a statistical portrait of substance use, violence, suicide attempts, and potentially dangerous sexual behavior—shows overall risk-taking dropping in this age group while the number of teens taking multiple risks holds steady. A surprise of note to parents and policymakers alike: the same teens who experiment with risky behavior often also get good grades, play school sports, or toe the line in other ways. The second report reviews what is known about successful interventions to reduce such risky behavior. The third addresses the need to put sexual and reproductive health front and center in a broad health initiative aimed at young men.

We also helped inform the national debate on childcare for America's working families. Our analysis of data from the Urban Institute's National Survey of America's Families revealed which arrangements parents pick and what they pay for childcare. For many states, we collected the first-ever state-level data. One such finding: while about one-third of American kids aged six to twelve spent time alone in 1997 while their parents worked, only one-fifth in Minnesota did and over one-half in Michigan did.

STAFF | Freya Sonenstein (Center Director) | Gina Adams | Sarah Adelman | Roseana Bess | Natalya Bolshun | Jeffrey Capizzano | Randy Capps | Sonja Drumgoole | Harriet Duleep | Jennifer Ehrle | Marvin Eisen | Michael Fix | Chris Furgiuele | Alyse Freilich | Gary Gates | Rob Geen | Amy Jantz | Kathryn Kortenkamp | Laureen Laglagaron | Jacob Leos-Urbel | Laura Duberstein Lindberg | Sheila Lopez | Karin Malm | Scott McNiven | Jeffrey Passel | Stacey Phillips | Rajeev Ramchand | Kathleen Snyder | Matthew Stagner | Wayne Vroman | Wendy Zimmermann



Selected Publications

- >> *Overlooked and Underserved: Immigrant Students in U.S. Secondary Schools*, by J. Ruiz-de-Velasco and M. Fix, with B. Clewell.
- >> “Sexual Activity and Contraceptive Practices among Teenagers in the United States, 1988 and 1995,” by J. Abma and F. Sonenstein, in *Vital Statistics*.
- >> “In the Interest of Children: Rethinking Federal and State Policies Affecting Kinship Care,” by R. Geen, in *Policy and Practice*.
- >> *Child Care Patterns of School-Age Children with Employed Mothers*, by J. Capizzano, K. Tout, and G. Adams.
- >> *All Under One Roof: Immigrant Families in an Era of Reform*, by M. Fix and W. Zimmermann.
- >> *Teen Risk-Taking: A Statistical Portrait*, by L. Lindberg, S. Boggess, L. Porter, and S. Williams.

>>> The Assessing the New Federalism Project

Selected Publications

- >> *Snapshots of America's Families II*, by the Assessing the New Federalism staff.
- >> *Child Care Arrangements for Children under Five*, by J. Capizzano, G. Adams, and F. Sonenstein.
- >> *Three Years into SCHIP: What States Are and Are Not Spending*, by G. Kenny, F. Ullman, and A. Weil.
- >> *Racial and Ethnic Disparities: Key Findings from the National Survey of America's Families*, by S. Staveteig and A. Wigton.
- >> *Economic Conditions and State Tax Policy: Experience over the Last Decade and Implications for the Future*, by D. Merriman.

Welfare reform and the new State Children's Health Insurance Program represent a swing of the political pendulum toward relying on states to define and structure U.S. social policy. As these new laws were passed, the Institute's Assessing the New Federalism Project (ANF) began monitoring state policy choices and tracking how children and families fare. Drawing on expertise from throughout the Institute, the ANF project represents a unique approach to understanding the transformation of the American social safety net into one organized around the notion that low-income parents must work.

Since 1996, eighteen foundations have funded Assessing the New Federalism's studies and surveys and have helped disseminate the results. This unusually broad-based venture speaks to public confidence in Urban Institute's research methods and standards. Even more, it speaks to the nation's need to understand what's happening to the social safety net and who is and isn't covered by it.

HIGHLIGHTS OF 2000 | We released *Snapshots of America's Families II*—findings from our 1999 National Survey of America's Families. These briefs show how household income, employment, health, and well-being have changed in the first two years after welfare reform. Like all other ANF research, *Snapshots* are available on our Web site.

We also brought new information to the debate over who's minding the nation's children. And we delivered the first-ever state-by-state data on families' experiences with childcare, estimating the number of young children who take care of themselves after school and the number of hours these kids are on their own.

Other issues covered in the dozens of ANF briefs and papers released in 2000 ranged from the reasons behind growth in state budgets in the 1990s, to health insurance coverage for the near-elderly, and to work among teenagers from poor families.

STAFF | Alan Weil (Center Director) | Fritz Scheuren (Senior Fellow) | Tamara Black | Ken Finegold | Alex Harrington | Phyllis Jackson | Harold Leibovitz | Olga Popovic | Robin McCullough-Harlin | Bonnie Nowak | Adam Safir | Sarah Staveteig | Kevin Wang | Alyssa Wigton



Administration

THE URBAN INSTITUTE

Executive Office Staff

Nicole Crawford
Michael English
Laticia Taylor

Financial Analysis and Planning

Debra Gallop, Director
Leslie Archer
David Crowley
Judy Johnson
Jacqueline Matthews

Development

Drew Wynn, Director

Accounting

Charmaine Morgan, Director
Lang Caovan
Carrie Chin
Emil Comsti
Faith Hill
William Marcelino
Angela McLean
Victoria Pereira
Tangene Sumlin
Martha Whitehead
Keelar Williams

Grants and Contracts

Catherine Massey, Director
Barbara Donigan
Alexandra Ferguson
Bernette Smith
Lorraine Washington
Booker Weaver

Administration

Everett Madden, Director

Human Resources

Deborah Hoover, Director
Dawn Dangel
Paul Lewinthal
Irene Marchuk
Tammy Pritt
Blythe Wallgren
Evelyn Williams

Purchasing and Office Services

Michael Artis, Director
Glenn Bailey
Ernest Daniel
Frederick Farmer, Jr.
Phyllis Jackson
Karen Johnson
Terry Robinson

Library and Information Services

Nancy Minter, Director
Hetty Barthel
Teresa Coberly
Ostara Hollyoak
Rachel McWilliams Kirkland
Kirsten van der Veen

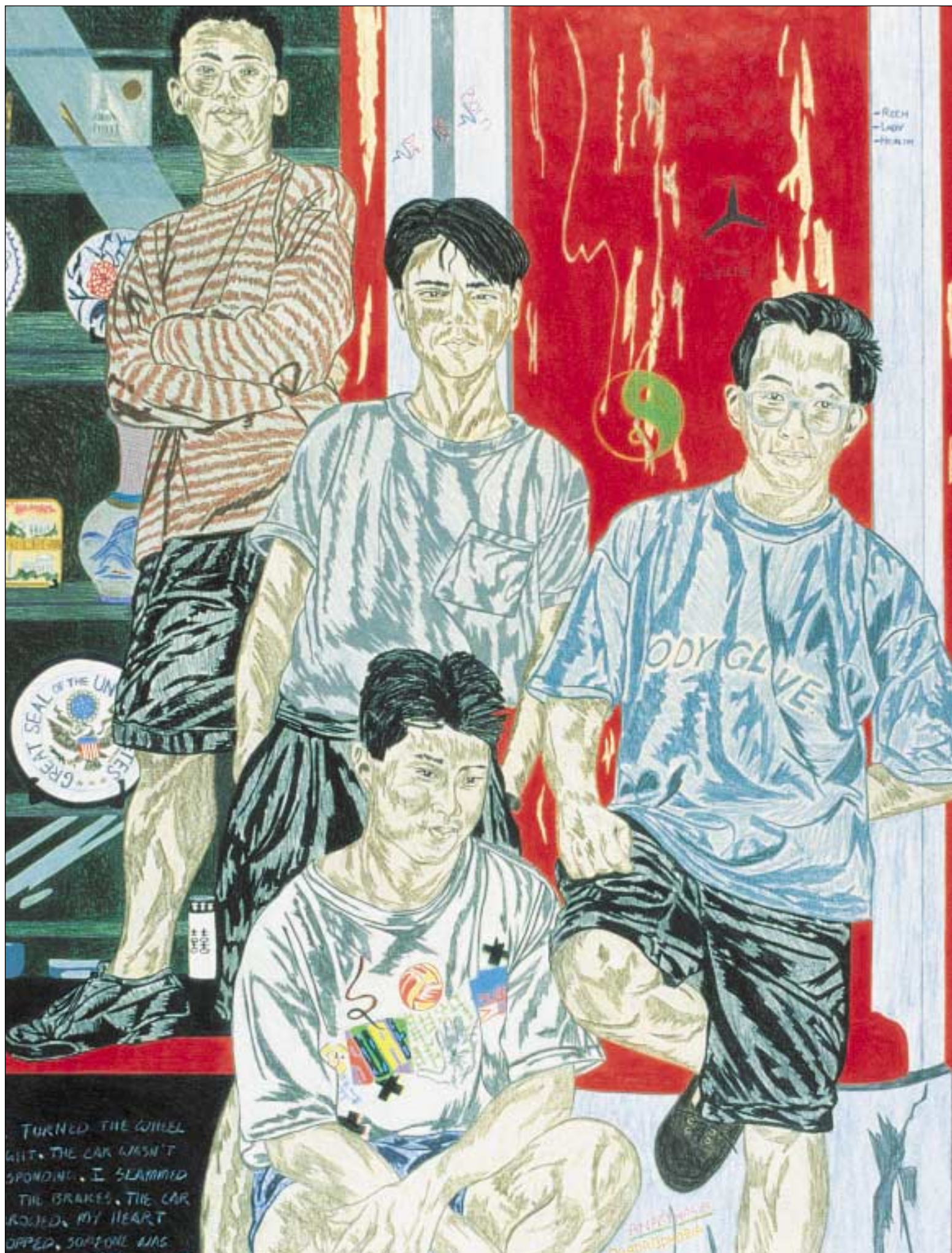
Executive Office Research

Senior Fellows

Leonard Burman
Marilyn Moon
Janet Norwood
Rudolph Penner
George Peterson
Fritz Scheuren
John Shannon
C. Eugene Steuerle
Raymond Struyk
Lawrence Thompson
Eric Toder
Jeremy Travis

Special Projects Staff

Adam Carasso
Elizabeth Cove
Joseph Pickard



Communication

The communications umbrella covers the UI Press/Office of Publications and the Office of Public Affairs, which work as partners. Key functions and activities include:

BOOKS

In-depth analyses of public policy and program issues. **Examples:** *Improving the Odds: Increasing the Effectiveness of Publicly Funded Training; Vouchers and the Provision of Public Services*

CONFERENCES

Briefings and roundtables for policy analysts, program practitioners, and the media. **Examples:** 11th Annual Roundtable on the Budget and the Economy; "Election Day 2000: What Impact on the District?"

CHECKPOINTS

Reproducible graphics based on key policy-related statistics from Urban Institute research and e-mailed or faxed to the media.

DIRECTORIES AND GUIDES

Information-rich compendiums for policymakers, program managers, and researchers. **Examples:** *Young Men's Sexual and Reproductive Health; Teen Risk-Taking: Promising Prevention Programs and Approaches*

EDUCATION

Briefings and lectures on the Institute's work, structure, and history for students, practitioners in training, researchers and dignitaries from abroad, and public officials.

FIRST TUESDAYS

Monthly luncheon roundtables on issues of national interest. **Examples:** "Prisoner Reentry: Who's Coming Home?"; "Beyond School-Based Sex Education: Promoting Responsible Behavior"; "Housing Vouchers: How Well Do They Work?"; "Child Care for Young Children: A First Look Across States"; "Are There Good Jobs for Low-Skilled Workers?"; "After a Decade of Change Is the Tax System Any Better?"

IN BRIEF

A monthly notice of upcoming events, current research, new publications, and outreach.

MEDIA LIAISON

Close work with the national press corps and state newspapers and broadcast media to provide facts and perspectives on emerging trends and breaking news.

OP EDS

Policy perspectives for broad distribution to state, regional, and national newspapers. **Examples:** "Suing HMOs Won't Improve Care" (*Los Angeles Times*); "Policing Police Misconduct" (*New York Post*); "Dr. Bradley or Dr. Gore?" (*Washington Post*); "One Tough Plant" (*New York Times*); "Will CHA's New Plan Help Residents?" (*Chicago Tribune*); "Where is Welfare Reform Heading?" (*San Francisco Chronicle*)

POLICY BRIEFS

Concise and timely explorations of policy issues and choices. **Examples:** *Extending the Charitable Deduction to Nonitemizers: Policy Issues and Options; Employee Stock Ownership Plans: A Status Report; Sharing the Pain of Social Security and Medicare Reform*

REPORTS

Research findings, results from program evaluations, perspectives on emerging trends, problems with the social safety net, and policy opportunities. **Examples:** *Structuring the Inquiry into Advocacy*, vol. I; *The Low-Wage Labor Market: Challenges and Opportunities for Economic Self-Sufficiency; Homeownership and Housing Finance Policy in the Former Soviet Bloc: Costly Populism; Section 8 Mobility and Neighborhood Health; Economic Consequences of an Aging Population*

SOURCEBOOK FOR REPORTERS

A biennially updated guide to Institute expertise.

SPECIAL PROJECTS

One-off publications or events that highlight unexpected research findings or extraordinary scholarship, bring cross-cutting or synergistic work from two or more centers to the fore, or sharpen the public debate on pressing issues. **Examples:** *Overlooked and Underserved: Immigrant Students in U.S. Secondary Schools; Teen Risk-Taking: A Statistical Portrait*

TESTIMONY AND PRESENTATIONS

Facts, background, commentary, and research findings delivered to members of Congress and other decision-makers, fellow researchers, and program managers.

UPDATES

Bulletins on recent Urban Institute conferences and legislative testimony to keep the public posted.

WEB SITE

An award-winning electronic tour of the Institute's research, publications, staff roster, and activities (www.urban.org).

STAFF

Kathleen Courier, Vice President for Communication
Office of Public Affairs
Susan Brown, Director
Rosaline Daniel
Richard Deutsch
Karen McKenzie
Frederick Scully
Renu Shukla

UI Press/Office of Publications
Frederick Custer, Director
Ejigayehu Berhanu
Lisa Esposito
Scott Forrey
Jamell Hall
Lee Lundy
Helena Mickle
Corinna Nicolaou
Glenn Popson
Blair Burns Potter
Grenda Townsend-Hudson
Suellen Wenz
Gwen Williamson
Barbara Willis

Information Technology

State-of-the-art research and management rely heavily on cutting-edge technology and the highly skilled professionals needed to configure and maintain it. The Urban Institute's Information Technology (IT) group provides both efficiently under the duress all high-tech systems generate but also goes farther—working as integral members of research teams to apply technical knowledge and resources to the analysis.

IT provides computer services ranging from support for the Institute's business operations to communications support for our Web sites and e-mail. On research teams, IT staff line up the hardware and software needed to execute research projects, help conceptualize and design the computer-assisted components, and bring programmer analysts' skills to the projects.

In 2000, IT worked with the Assessing the New Federalism project to develop a new on-line product that allows users of its National Survey of America's Families (NSAF) database—which is posted on our Web site at <http://newfederalism.urban.org/nsaf>—to create customized tables

quickly. Called CrossTabMaker, it blends together the NSAF data and statistical software in a point-and-click format that anyone with only minimal knowledge of this data can easily use. CrossTabMaker was enthusiastically received in demonstrations for the Association of Public Policy and Management and various nonprofit groups concerned about children and families.

Working on other Institute projects, IT also developed a computerized system that allows Metro Center researchers to enter, track, and cross-reference information from tests of minority discrimination in the housing rental and sales markets.

An even more ambitious IT project in 2000 was working with Institute researchers to convert our NSAF database to another format compatible with our micro-simulation models. Now the groundwork has been laid for using this wealth of data as input to simulations of how tax, welfare, or health insurance changes affect households.

STAFF | Peggy Sulvetta (Director) | Albert Alana | Jim Becker | Matthew Buettgens | Joe Busch | An-Lon Chen | George Chow | Thy Dao | David D'Orio | Hank Harrison | Hadi Jeddy | Paul Johnson | Mary Lee | David Liska | Harvey Meyerson | Joyce Morton | Doug Murray | Alberto Serapio | Glenn Shaup | Corey Tang | Jeanne Yang | Rena Yount | Yan Yuan

Financial Statement

SUMMARY OF FINANCIAL INFORMATION

For Fiscal Years ended December 31, 2000 and 1999

	2000	1999
Total Assets	<u>\$76,900,000</u>	<u>\$75,800,000</u>
Total Liabilities	12,300,000	9,200,000
Net Assets	<u>64,600,000</u>	<u>66,600,000</u>
Liabilities and Net Assets	<u>76,900,000</u>	<u>75,800,000</u>
Operating Activities		
Revenues	62,100,000	59,700,000
Expenses	<u>(61,100,000)</u>	<u>(60,800,000)</u>
Subtotal	<u>1,000,000</u>	<u>(1,100,000)</u>
Non-Operating Activities		
Revenues	(200,000)	10,800,000
Expenses & Transfers	<u>(2,800,000)</u>	<u>(3,600,000)</u>
Subtotal	<u>(3,000,000)</u>	<u>7,200,000</u>
Total Change in Net Assets	(2,000,000)	6,100,000
Net Assets Beginning of Year	<u>66,600,000</u>	<u>60,500,000</u>
Net Assets End of Year	<u>\$64,600,000</u>	<u>\$66,600,000</u>

President's Fund



The President's Fund was established in December 1999 in recognition of William Gorham, the Institute's founding President, and his service of more than 32 years. The endowed fund gives the Institute flexibility to pursue independent short-term research, bring together policymakers and analysts for debate, and finance capital projects. To date, contributions have been received from:

Joan T. Bok	J. Irwin Miller
Andrew Brimmer	Arjay and Frances Miller Foundation
James E. and Diane W. Burke Foundation	Eleanor Holmes Norton
Carsey Family Foundation	Lucio Noto
John Deutch	Hugh B. Price
ExxonMobil Foundation	Price Family Fund
Ruth Z. Fleishman Fund	Lois D. Rice
Richard B. Fisher	William D. Ruckelshaus
Gail W. Gorham	Herbert Scarf
Katharine Graham	Henry B. Schacht
Richard C. Green, Jr.	William W. Scranton
Beverly and Fernando A. Guerra, M.D.	Franklin Thomas
Robert P. Kogod	Virginia and Dick Thornburgh
Bayless A. Manning	Judy Woodruff
Mr. and Mrs. Stanley Marcus	Mortimer B. Zuckerman
Robert S. McNamara	
Charles L. Mee, Jr.	

Contributions to the fund can be sent to Drew Wynn, the Institute's development director.

Sponsors

Private Support

AARP
 Abt Associates
 Academy for Educational Development
 Aetna Inc.
 Affinity Group on Population
 Paul G. Allen Foundation for the Arts
 American Educational Research Association
 American Express Foundation
 Anonymous
 ARCO Foundation
 Aspen Institute
 Association of Public Policy Analysis and Management
 Barents-KPMG
 H & R Block
 Bristol-Myers Squibb
 Brookings Institution
 The Brown Foundation
 Louise and Ardé Bulova Fund
 Morris and Gwendolyn Cafritz Foundation
 Annie E. Casey Foundation
 Center for Applied Linguistics
 Center for Arts and Culture
 Center for Health Care Strategies
 Center for Retirement Strategies at Boston College
 Center on Addiction and Substance Abuse
 The Century Foundation
 Chase Manhattan Foundation
 Chevron Corporation
 Chicago Community Trust
 Citigroup Foundation
 Robert Sterling Clark Foundation
 Cleveland Foundation
 The Columbus Foundation
 The Commonwealth Fund
 Community Foundation for the National Capital Region
 Cornell University
 Crestar Foundation
 Nathan Cummings Foundation
 DaimlerChrysler Corporation Fund
 DC Agenda
 Deloitte & Touche
 John M. Deutch
 Donors Forum of Chicago
 Richard H. Driehaus Foundation
 Doris Duke Charitable Foundation
 Duke University

The Durfee Foundation
 Education Development Center
 Employee Benefit Research Institute
 ExxonMobil Foundation
 Fannie Mae Foundation
 Flintridge Foundation
 Ford Foundation
 Ford Motor Company Fund
 Foundation for Child Development
 Fund for Folk Culture
 Fund for New York City
 GE Fund
 George Washington University
 Wallace Alexander Gerbode Foundation
 J. Paul Getty Trust
 Richard and Rhoda Goldman Fund
 Gail W. and William Gorham
 William T. Grant Foundation
 Greater Chicago Philanthropy Initiative
 George Gund Foundation
 Alan Guttmacher Institute
 Health Systems Service
 William & Flora Hewlett Foundation
 Hillman Company
 Carla Hills
 Houston Endowment
 Hudson Institute
 Institute for Urban Economics
 International Resources Group, Ltd.
 James Irvine Foundation
 Japan Initiative
 Johnson & Johnson Family of Companies
 Robert Wood Johnson Foundation
 Joyce Foundation
 Henry J. Kaiser Family Foundation
 J. M. Kaplan Fund
 W. K. Kellogg Foundation
 Kimsey Foundation
 John S. and James L. Knight Foundation
 Robert P. Kogod
 Lewin Group-ICF
 The LEF Foundation
 Lincoln Institute of Land Policy
 Local Initiatives Support Corporation
 John D. and Catherine T. MacArthur Foundation
 March of Dimes Birth Defects Foundation

Mathematica Policy Research
 Andrew W. Mellon Foundation
 Melville Charitable Trust
 Merrill Lynch & Company Foundation
 Metropolitan Planning Council
 Eugene and Agnes Meyer Foundation
 University of Michigan
 Arjay & Frances Miller Foundation
 Morgan Stanley Dean Witter & Company
 Charles Stewart Mott Foundation
 John P. Murphy Foundation
 National Congress for Community Economic Development
 National Council of Asian Pacific Americans Community Development Corporations
 National Council of State Boards of Nursing
 National Healthy Mothers, Healthy Babies Coalition
 Northeastern University
 Northwest Area Foundation
 One to One Partnership
 Open Society Institute
 Opera America
 David and Lucile Packard Foundation
 William Penn Foundation
 Pentair, Inc.
 Pepco
 Pew Charitable Trusts
 PolicyLink
 Policy Studies Associates
 T. Rowe Price Associates Foundation
 Price Family Fund
 PriceWaterhouseCoopers
 Prince Charitable Trust
 Alfred P. Sloan Foundation
 RAND
 Lois D. Rice
 Smith Richardson Foundation
 Rockefeller Foundation
 Rosenberg Foundation
 The Seattle Foundation/Jaech Family Fund
 Louis A. Simpson
 Alfred P. Sloan Foundation
 Spencer Foundation
 SRI International
 State Justice Institute
 The Stuart Foundation
 Surdna Foundation
 Franklin A. Thomas

Tokyo Foundation
 UtiliCorp United
 United Planning Organization
 University of Alabama
 University of Pennsylvania
 University of Wisconsin
 Verizon Foundation
 Wallace Readers Digest Funds
 The Andy Warhol Foundation for the Visual Arts
 Washington Mutual Foundation
 Washington Regional Association of Grantmakers
 The Washington Post Company
 WellPoint Health Networks, Inc.
 Western Governors Association

Public Support

Asian Development Bank
 Council of Economic Advisors
 District of Columbia Child and Family Services Agency
 District of Columbia Financial Management & Assistance Authority
 District of Columbia Housing Authority
 Institute for Museum and Library Services Library of Congress
 Ministry of Finance, Government of Bermuda
 Montgomery County, Maryland
 National Endowment for the Arts
 National Science Foundation
 Ohio Arts Council
 Social Security Administration
 State of California
 State of Georgia
 State of Indiana
 State of New Jersey
 State of Oregon
 State of South Carolina
 State of Washington
 State of Wisconsin
 U.S. Agency for International Development
 U.S. Department of Agriculture
 U.S. Department of Commerce
 U.S. Department of Education
 U.S. Department of Health & Human Services
 U.S. Department of Housing & Urban Development
 U.S. Department of Justice
 U.S. Department of Labor
 World Bank



Urban Institute
2100 M Street, NW
Washington, DC 20037

Tel: 202-261-5709
Fax: 202-429-0687
E-mail: paffairs@ui.urban.org
Web Site: www.urban.org

To order books and research reports, call (1-877-UIPRESS)
or e-mail (pubs@ui.urban.org). Publications are also available
on-line (www.uipress.org).

