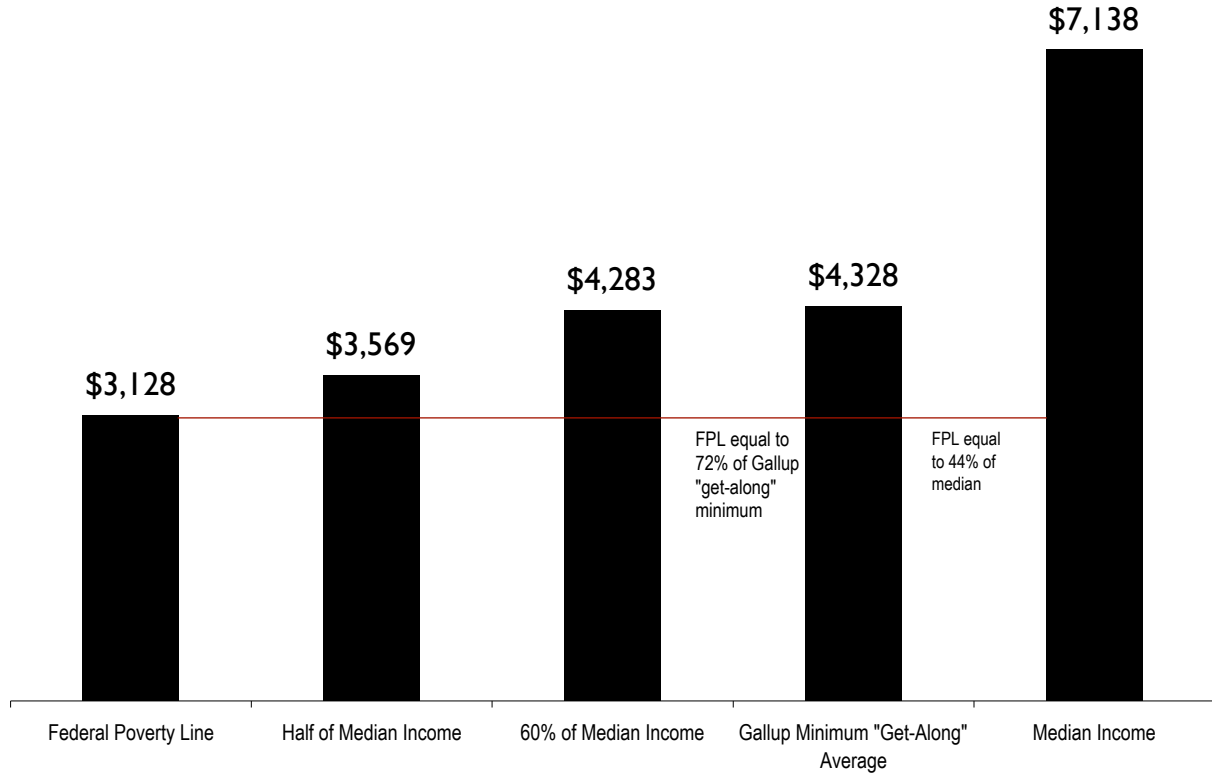


1

9

6

3

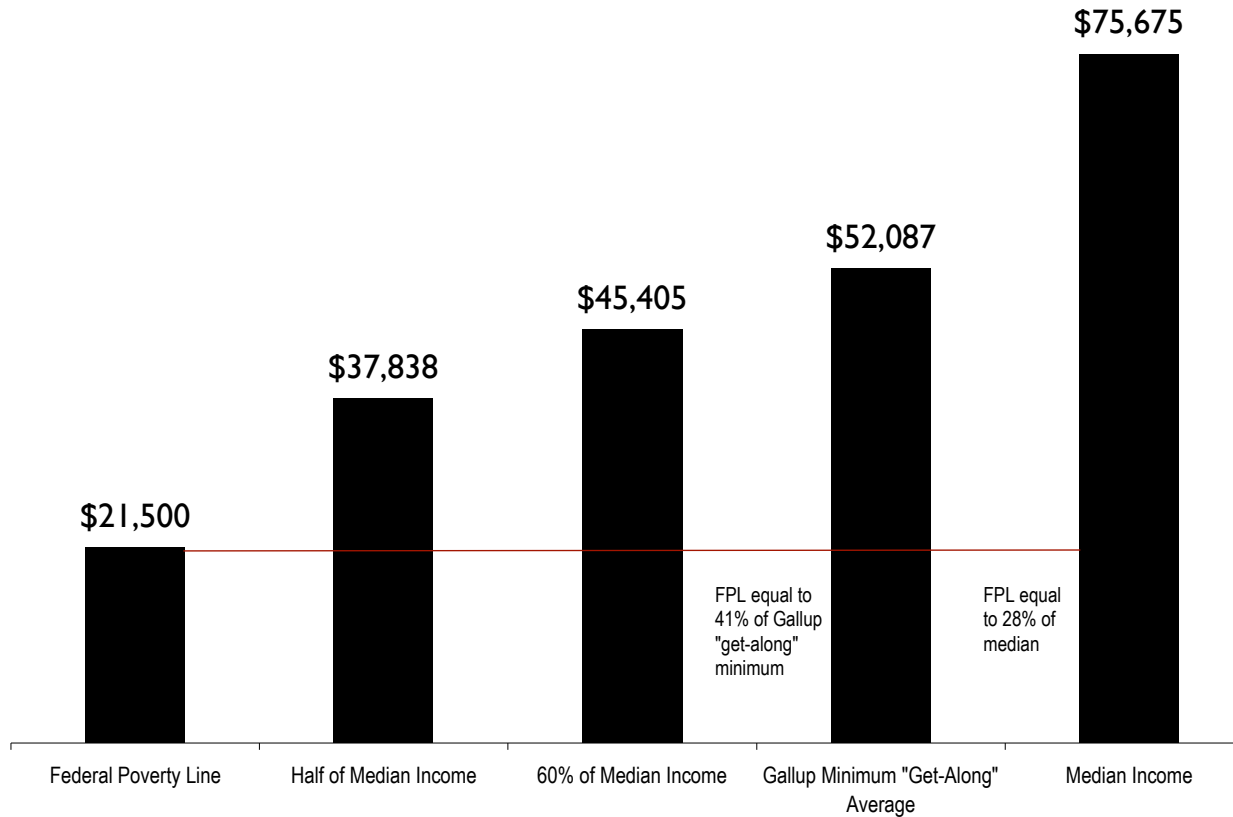


2

0

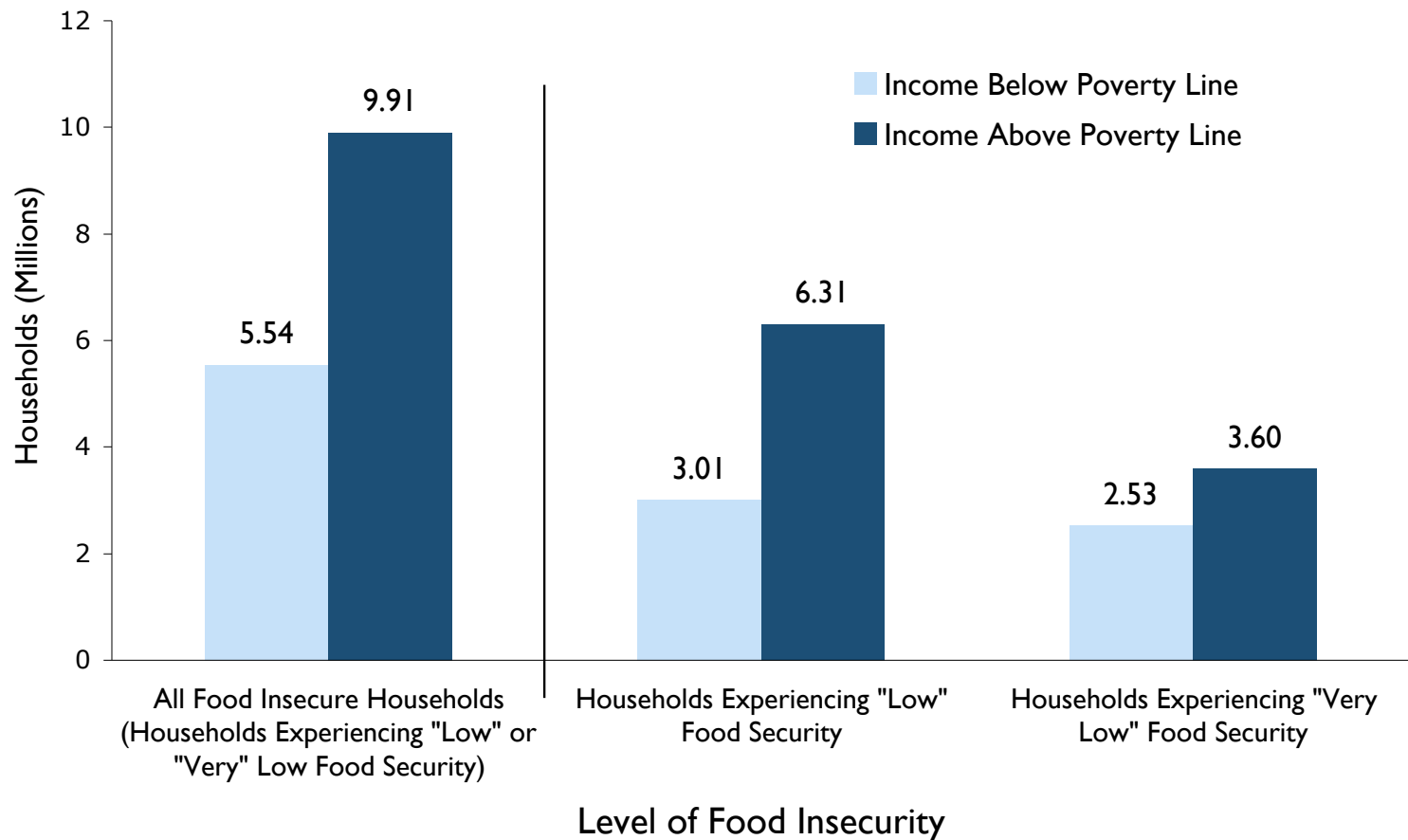
0

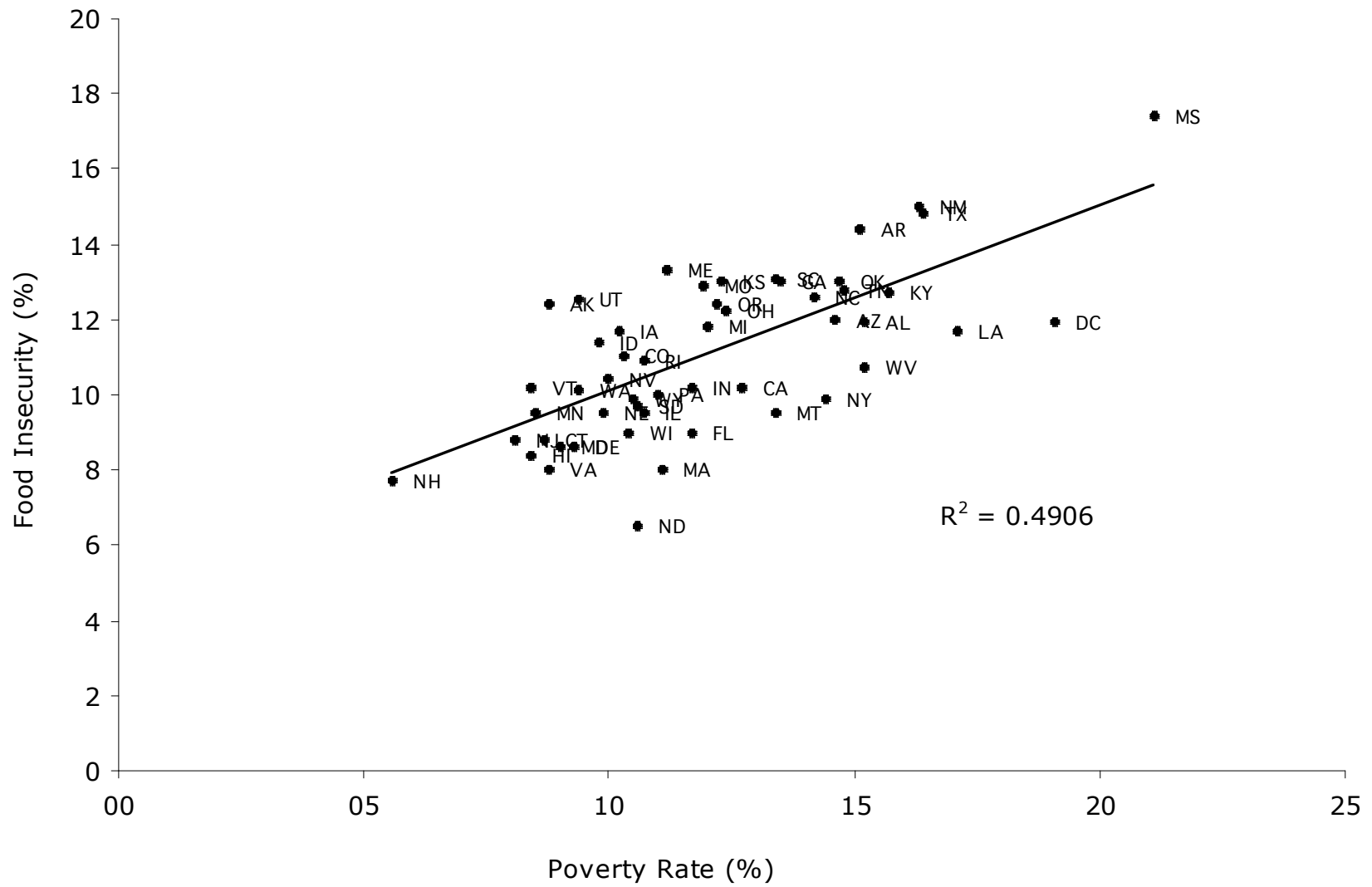
7

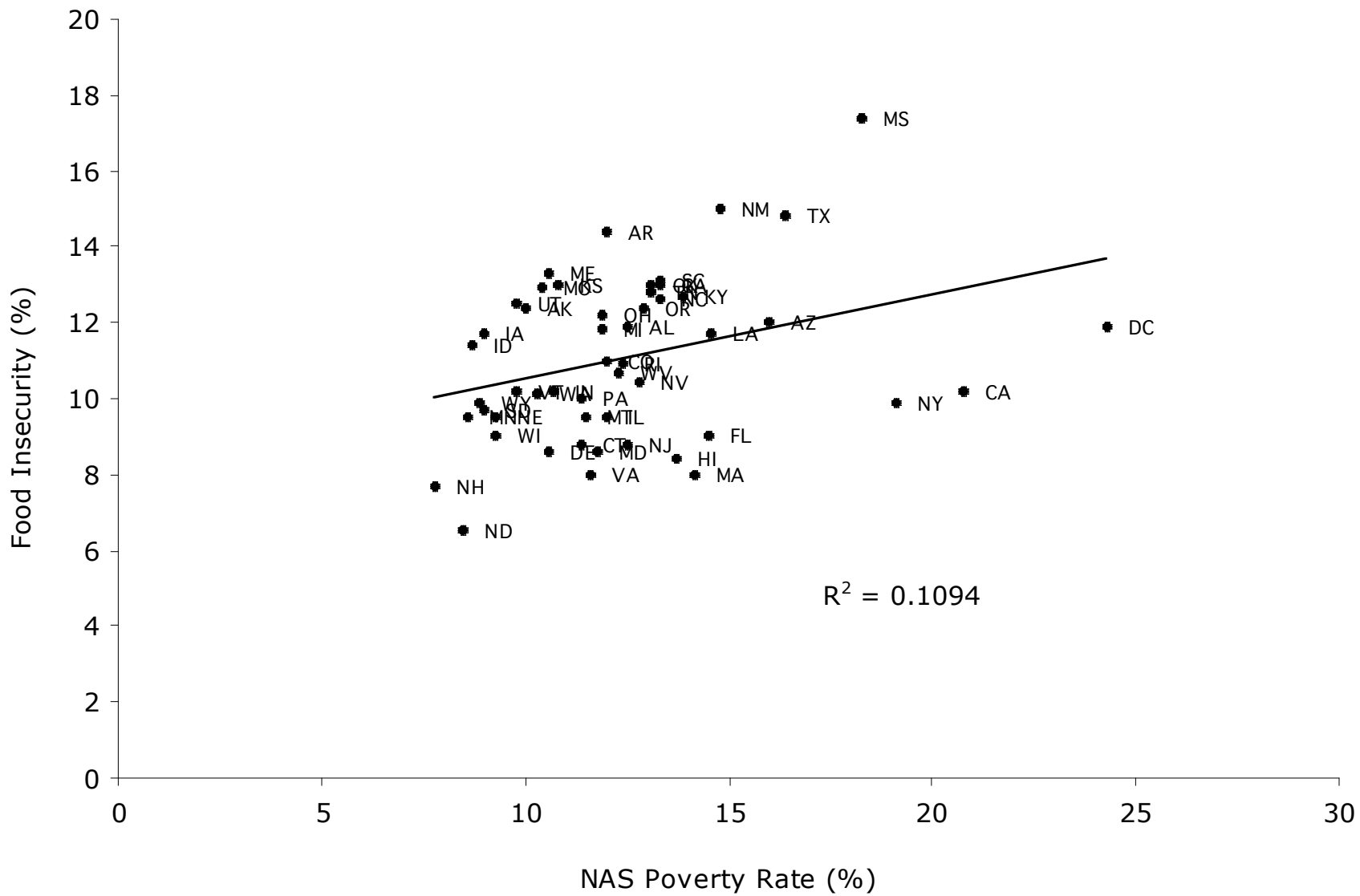


# Most Food Insecure Households Have Incomes Above the Current (Extremely Low) Poverty Line

The current federal poverty level excludes the majority of low-income Americans who experience food insecurity, including the most severe form of food insecurity, and majorities or near-majorities of low-income Americans who experiencing various other forms of economic hardship.









## **Child Poverty Act 2010**

### **2010 CHAPTER 9**

- 1) “Relative” Low Income: 60 percent of median income
- 2) Combined Low Income and Material Deprivation: 70 percent of median income and experiencing material deprivation (measured using a deprivation index)
- 3) “Absolute” Low Income: 60 percent of median income in 2010, adjusted for price changes
- 4) Persistent Poverty: 60 percent of median income in three of last four years