

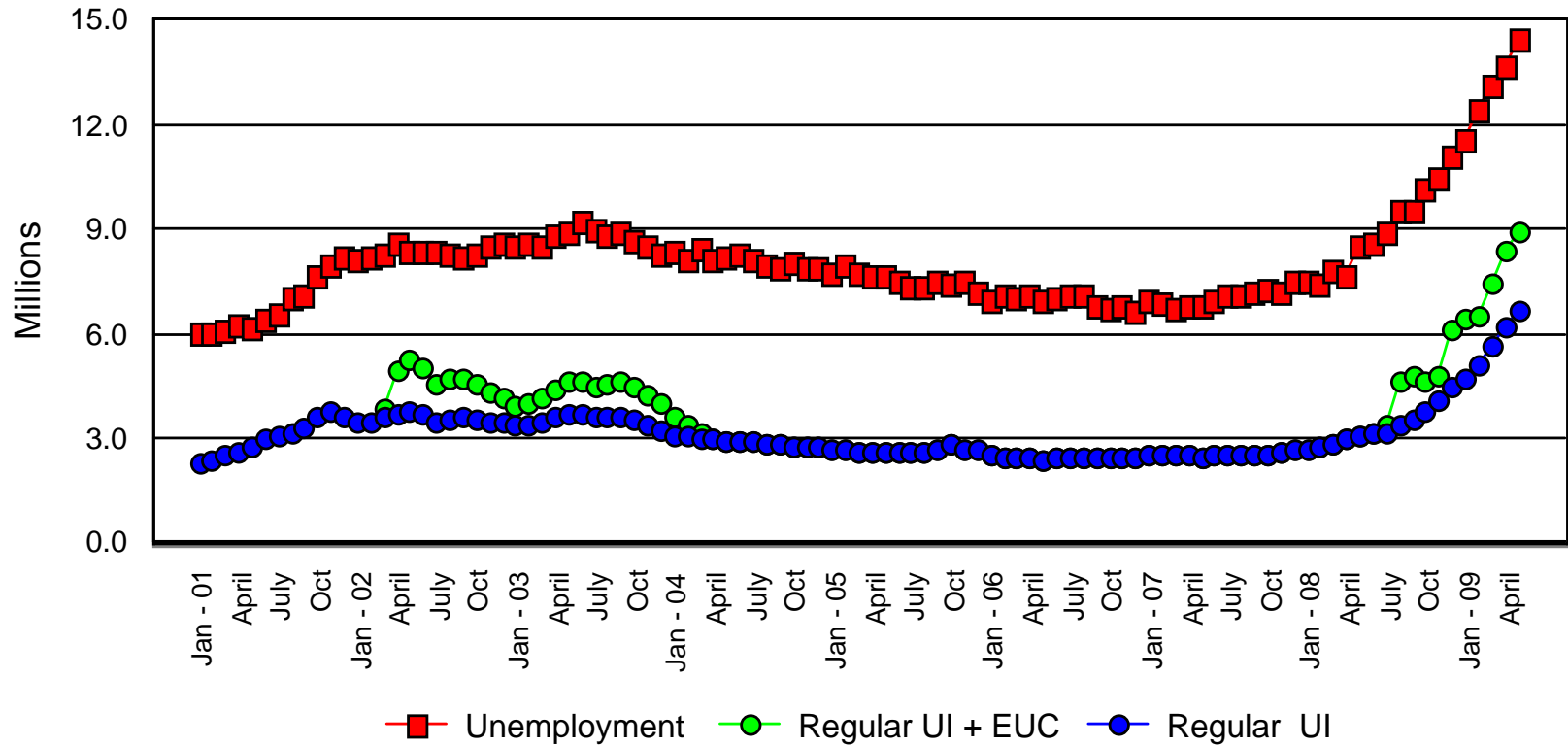
# The Recession and Unemployment Insurance

Dr. Wayne Vroman  
The Urban Institute

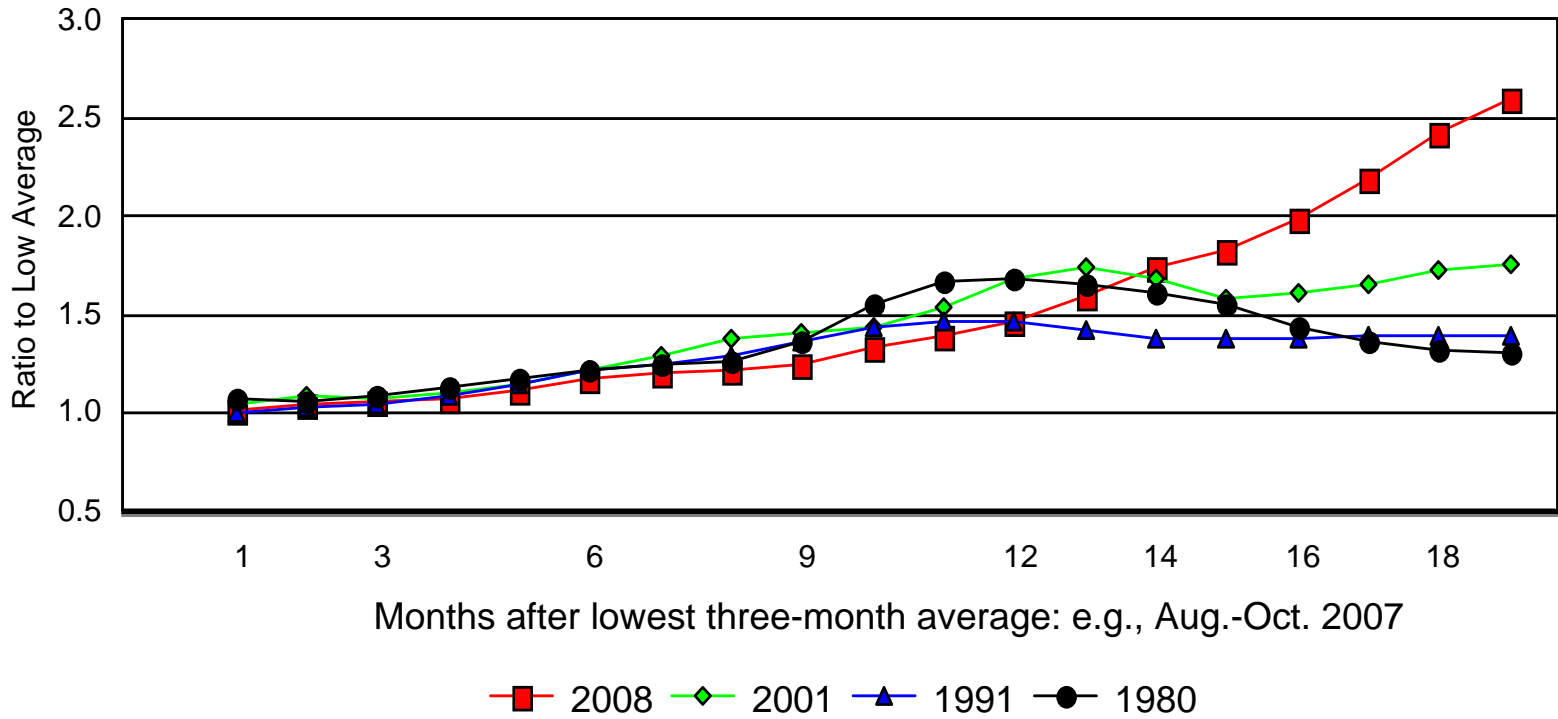
[wvroman@urban.org](mailto:wvroman@urban.org)

Presentation at Urban Institute  
Policy Forum No. 5  
June 11, 2009

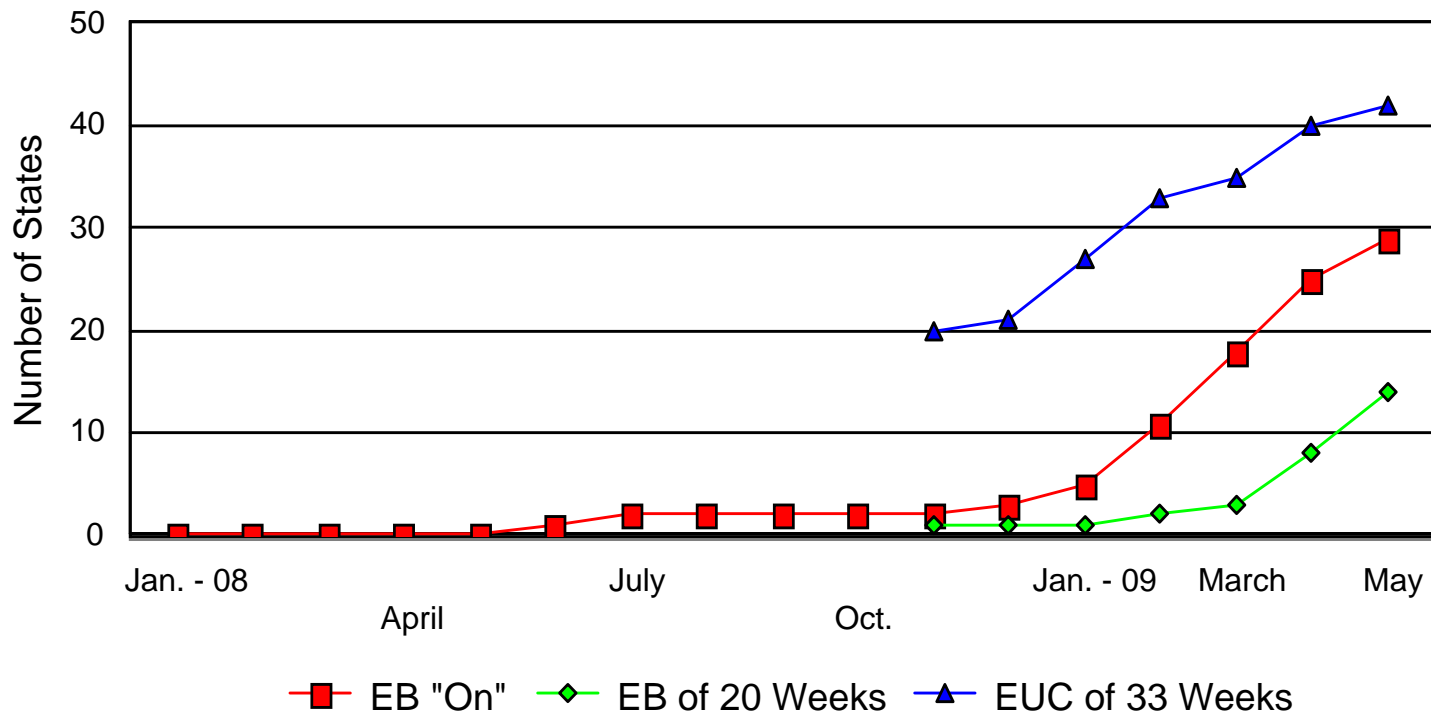
# Chart 1. Unemployment and UI Claimants, 2001 to 2009



## Chart 2. Monthly Continued Claims: Ratio to Low Average Four Downturns - Regular UI Program



### Chart 3. Activation of Long-Term UI Benefits End-of-Month Counts of 51 "States"



# Chart 4. UC Reciprocity Rates in G7 Countries, 1978 to 2008

