

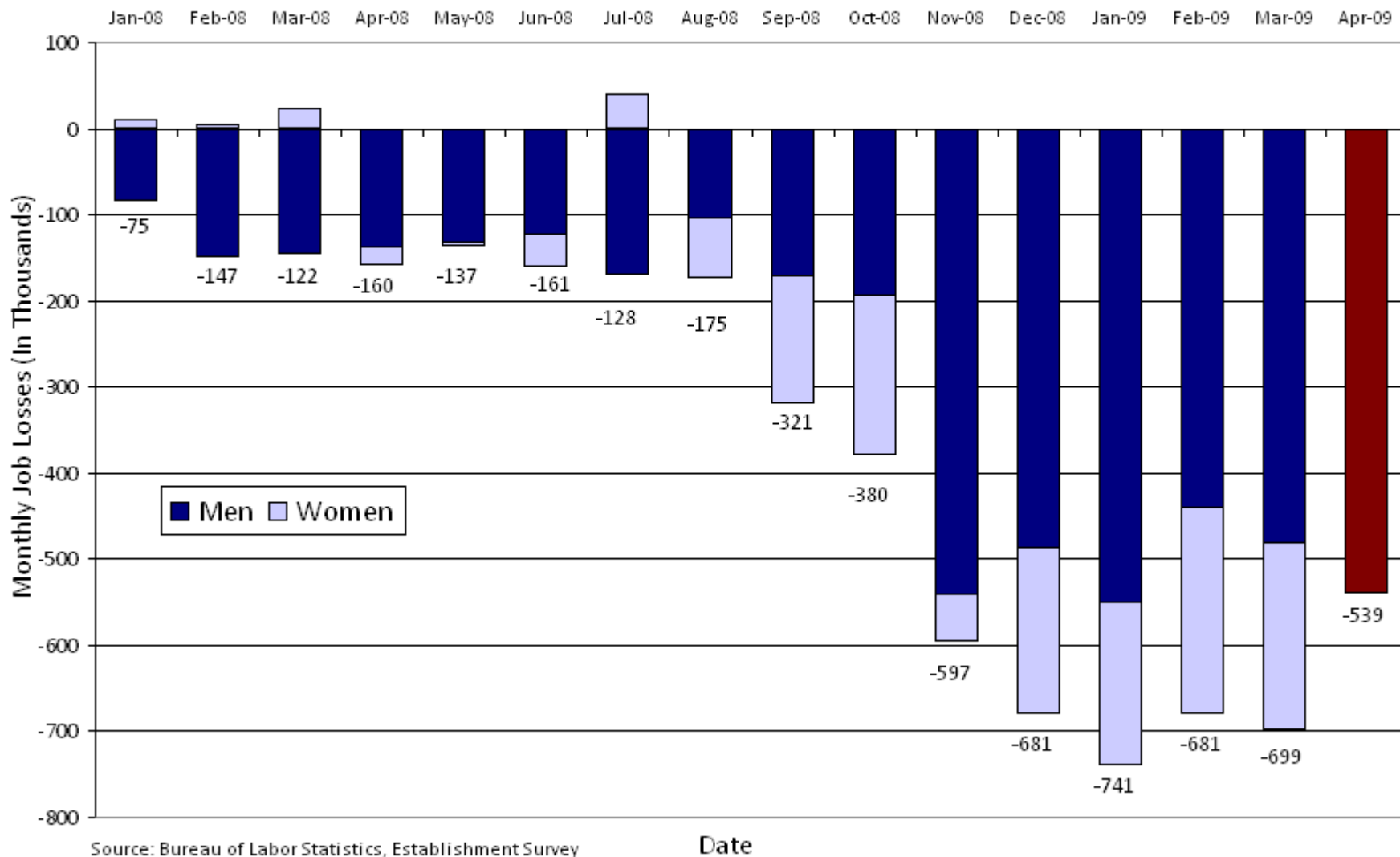
The recovery package and the labor market

Heather Boushey

Center for American Progress

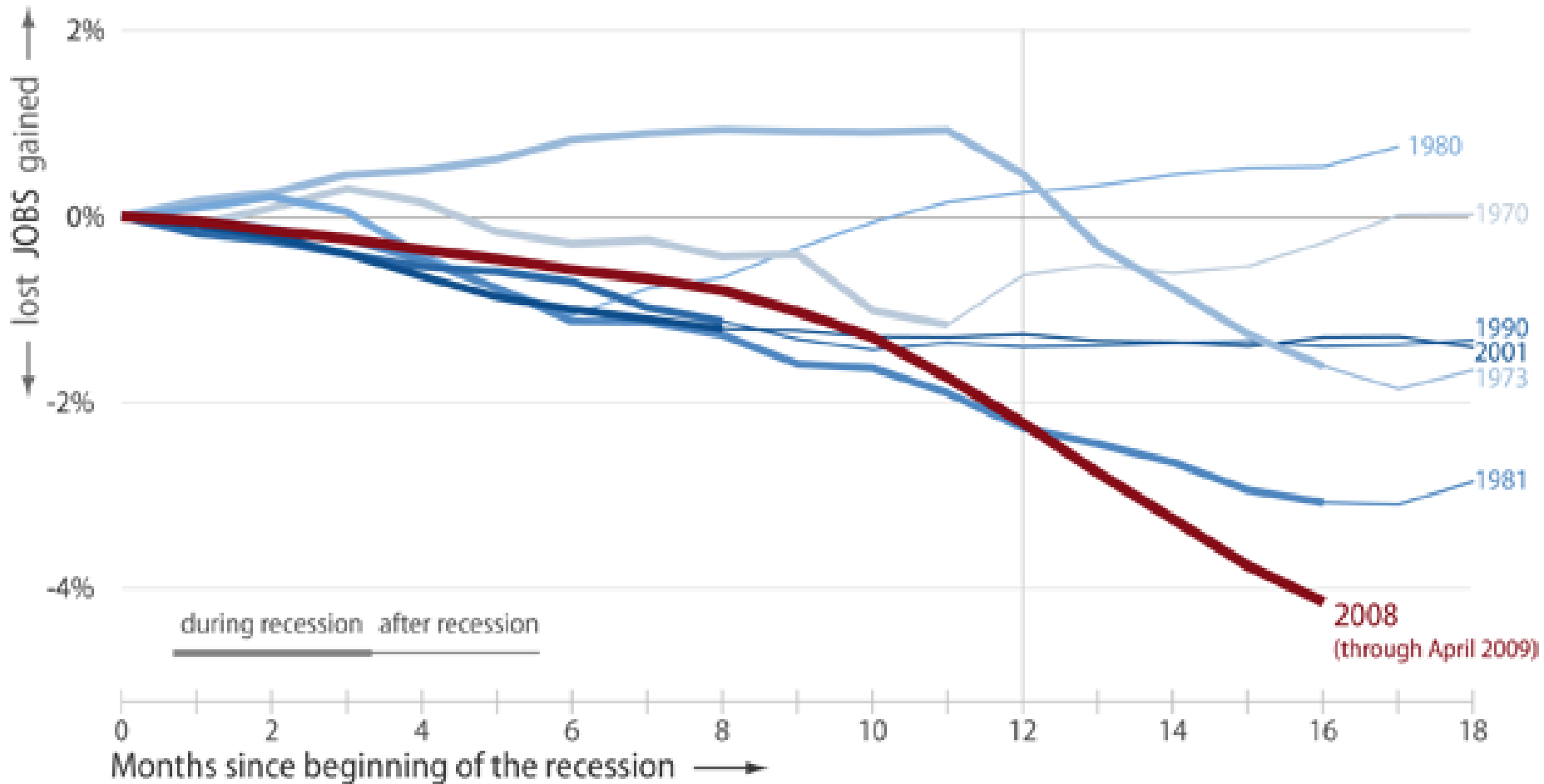
May 2009

Monthly Non-Farm Job Losses, In Thousands (December 2007 - April 2009)



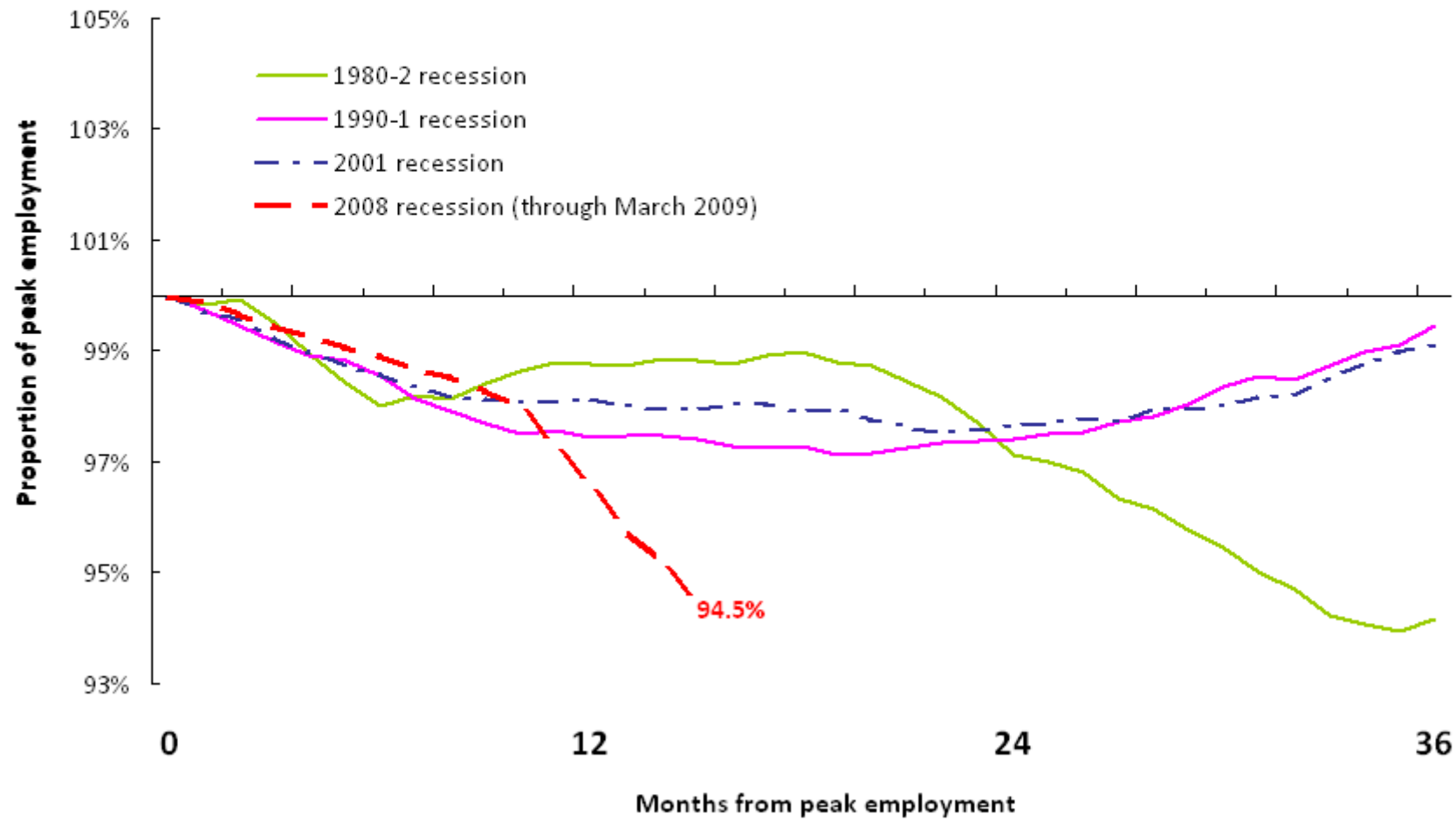
Jobs Lost or Gained During Recent Recessions

(as a share of total jobs pre-recession)



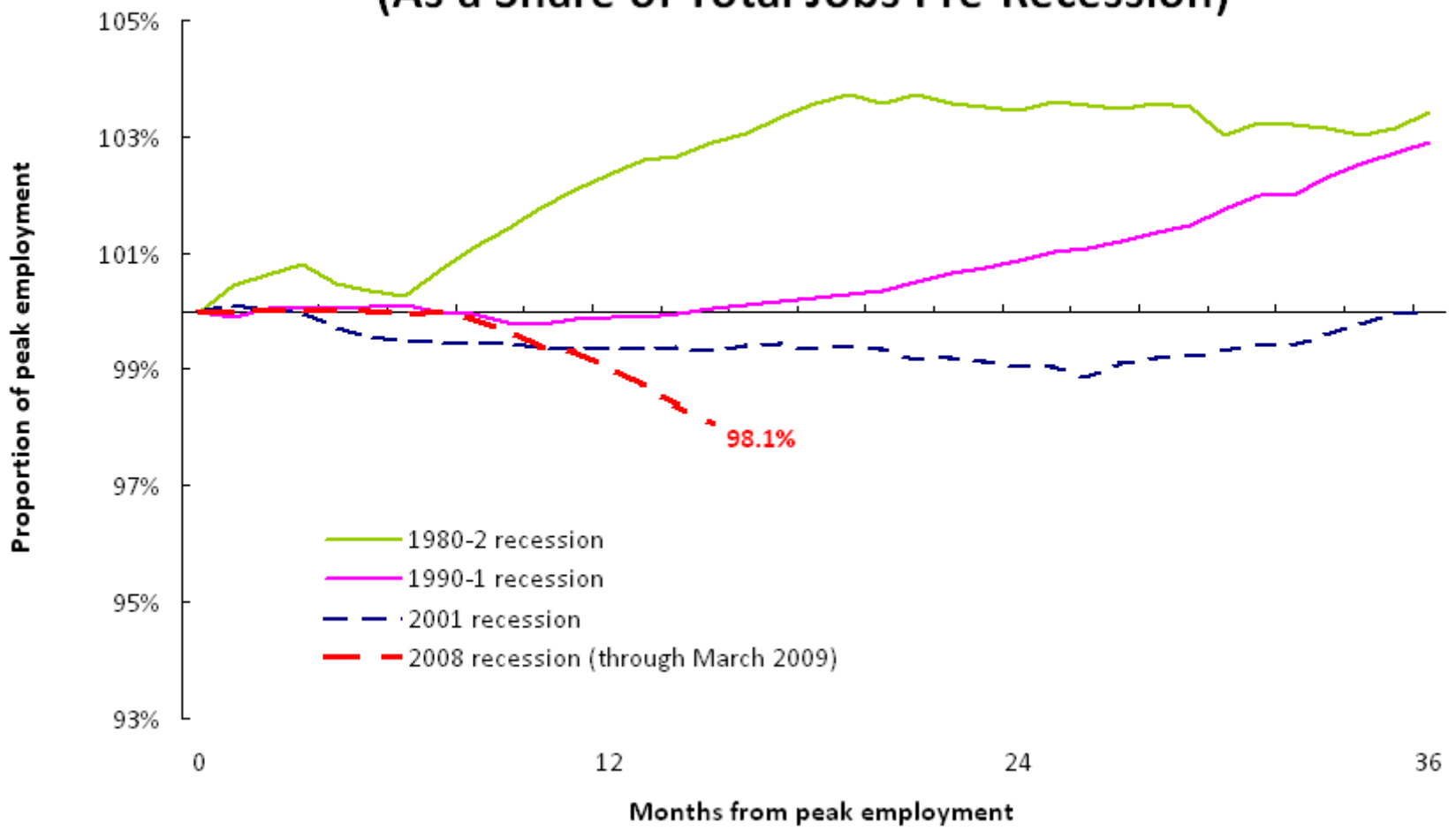
Sources: Bureau of Labor Statistics, Establishment Survey and National Bureau of Economic Research.

Men Have Lost More Jobs Than in Prior Recessions (As a Share of Total Jobs Pre-Recession)



Sources: Bureau of Labor Statistics, Establishment Survey and National Bureau of Economic Research.

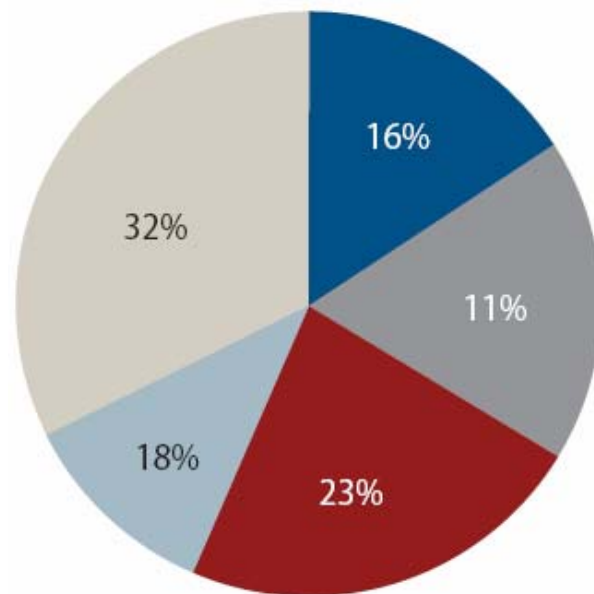
Women Have Lost More Jobs Than in Prior Recessions (As a Share of Total Jobs Pre-Recession)



Sources: Bureau of Labor Statistics, Establishment Survey and National Bureau of Economic Research.



Funding Allocations in the American Recovery and Reinvestment Act

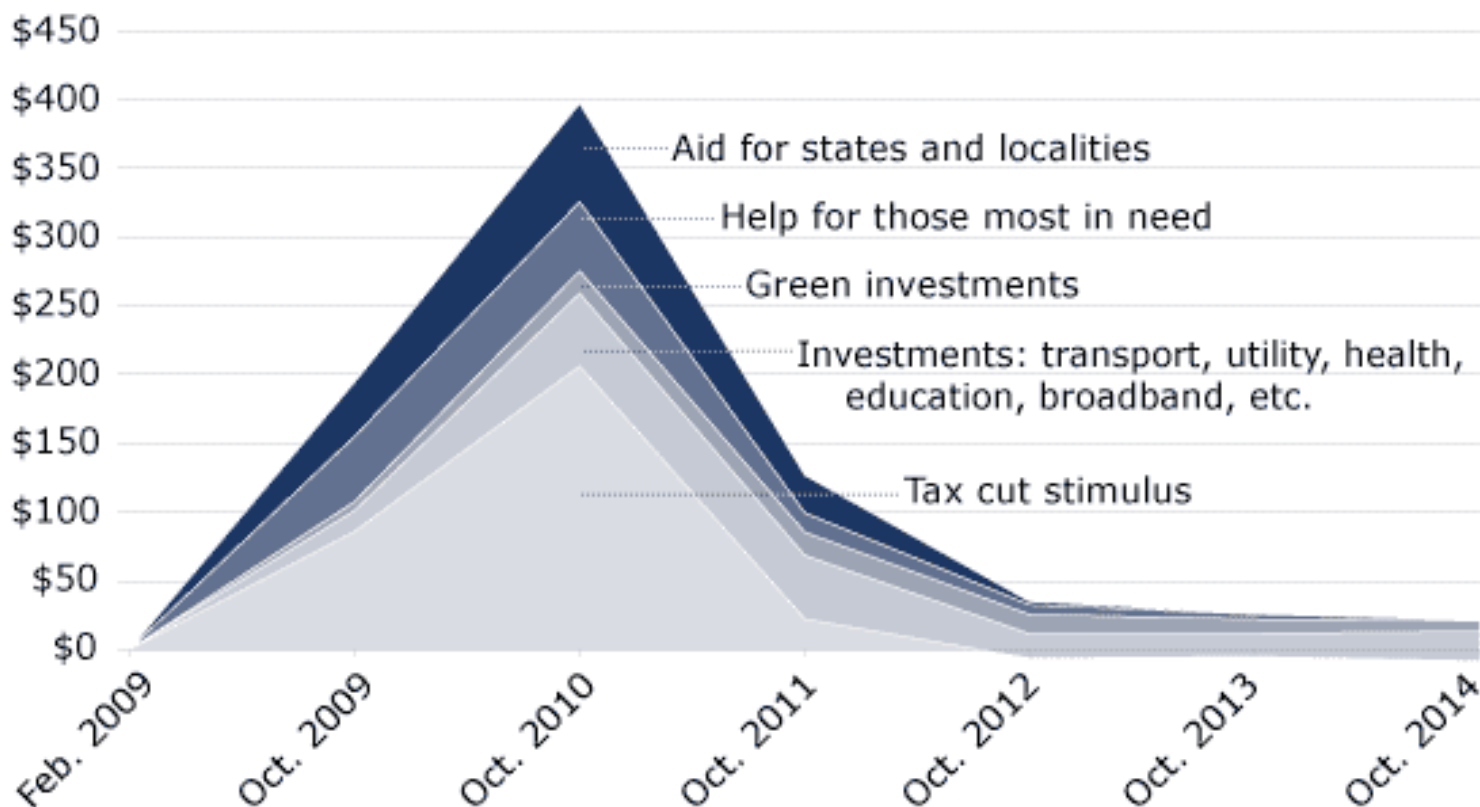


- Help for those most in need
- Aid for states and localities
- Investments: Transportation, utility, health care, education, broadband, etc.
- Green investments
- Tax cuts

Fast Action

The recovery bill is bringing fast and responsible help to the economy

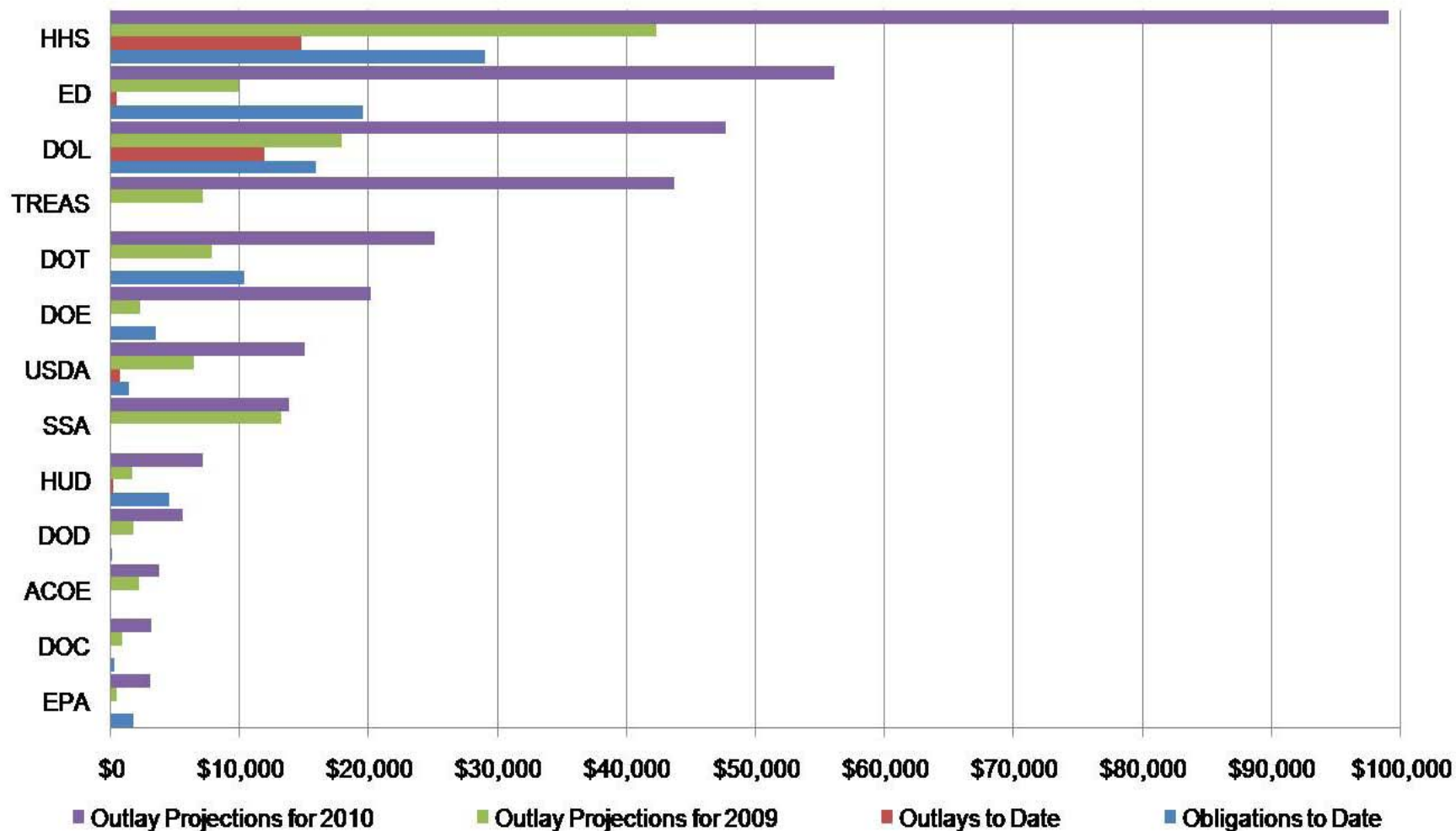
Billions of dollars



Source: Congressional Budget Office; Joint Committee on Taxation, calculated by each fiscal year beginning October 1st.



Outlay and Obligation Totals for Top Agencies



Dollars in Millions

Source: Graph from Final Q1 2009 ARRA Report at Recovery.gov

Data from Weekly Financial & Activity Reports through 5/5/09; President's FY 2010 Budget