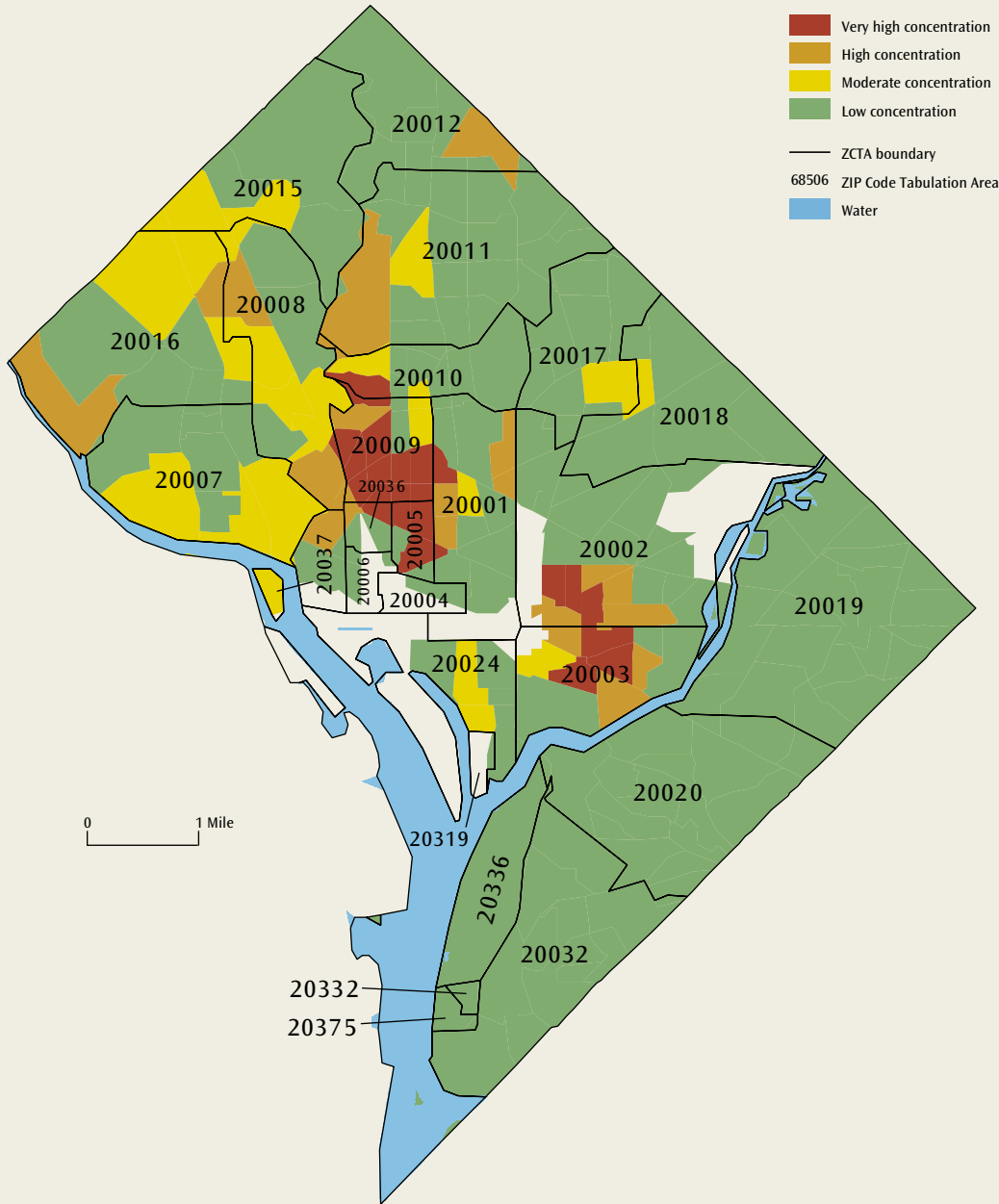
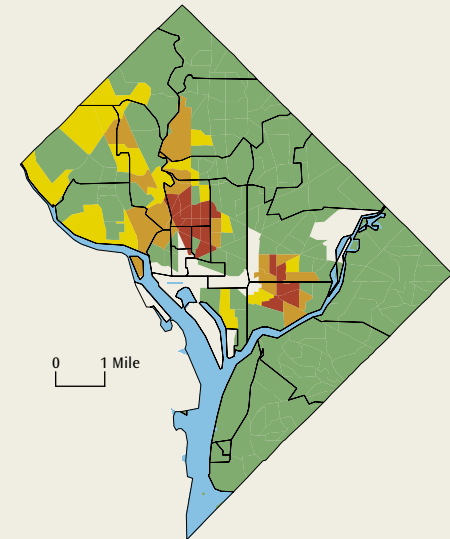


# WASHINGTON, D.C.

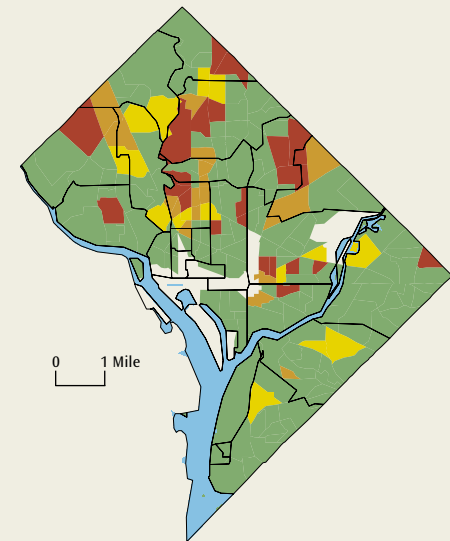
## Concentration of Gay/Lesbian Couples (by tract)



## Concentration of Gay Male Couples (by tract)



## Concentration of Lesbian Couples (by tract)



# Gay/Lesbian Index Rank: 24

Gay Male Index Rank: 13    Lesbian Index Rank: 66

## MSA Indices

Gay/Lesbian Index	1.33
Gay Male Index	1.51
Lesbian Index	1.13

## City Rankings and Indices

	City Index	Rank among top 50 cities	Rank among all communities
Gay/Lesbian	2.63	6	37
Gay Male	3.80	3	21
Lesbian	1.43	16	233

## Comparative Statistics

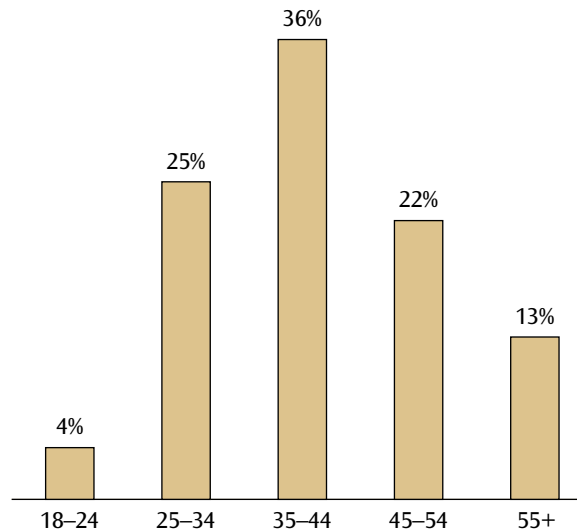
(Washington PMSA)

	All	GL couples	GL rank
Presence of children, among households	37%	19%	308
Seniors (55+), among adults	24%	13%	302
Nonwhite, among adults	42%	31%	90
Females, among adults	52%	32%	66

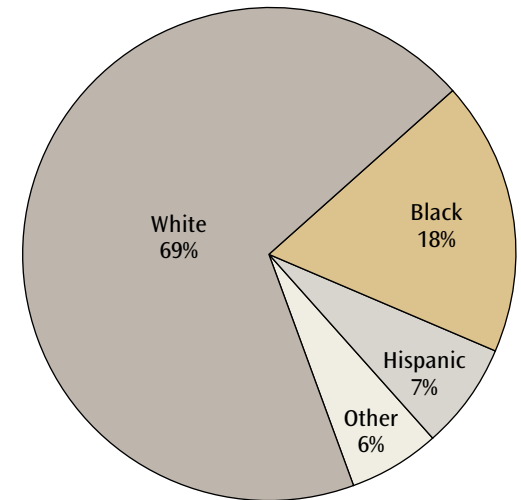
## Top ZIP Codes

	1	2	3	4	5
Gay and lesbian	20036	20009	20005	20003	20010
Gay	20005	20036	20009	20003	20008
Lesbian	20012	20009	20036	20003	20017

### Ages of Same-Sex Unmarried Partners



### Race/Ethnicity of Householder in Same-Sex Unmarried Partner Households



### Presence of Children under Age 18 in Same-Sex Unmarried Partner Households

