

NETWORK PARTNERS (cont.)

Association for the Advancement of Mexican America's (AAMA)

Residential substance abuse treatment

Austin Child Guidance Center (ACGC)

Assessments, family services, mental health service provider

Austin Travis County Mental Health and Mental Retardation

Intervention

CHOICES

Secure residential substance abuse treatment

Choosing How I Live Life (C.H.I.L.L.)

Outpatient treatment

Clean Investments Counseling Center (CICC)

Outpatient treatment

Creating Lasting Family Connections (CLFC)

Intervention, family services

Incentives

Residential substance abuse treatment

Phoenix Academy

Outpatient and residential substance abuse treatment

Providence of Texas

Intensive in-home family services

Riverside General Hospital, Houston Texas

Residential substance abuse treatment

Travis County Juvenile Drug Court

Specialized supervision with linkage to: substance abuse services, evening docket, case management, family services and mental health services

Young Women's Christian Association (YWCA)

Prevention and intervention, assessments, counseling

Youth Advocacy, Inc. (YAP)

Independent case management services

Family Focused Client Centered

The Network offers support groups for the parents, youth and other family members.



Probation Services Division

Emmitt W. Hayes, Jr., Director
512.854.7031

Eve Lee, Social Services Program Coordinator
512.854.5686

Clive Blackman, Casework Manager
512.854.5690

Kathy Smith, Judicial Service Manager
512.854.5685

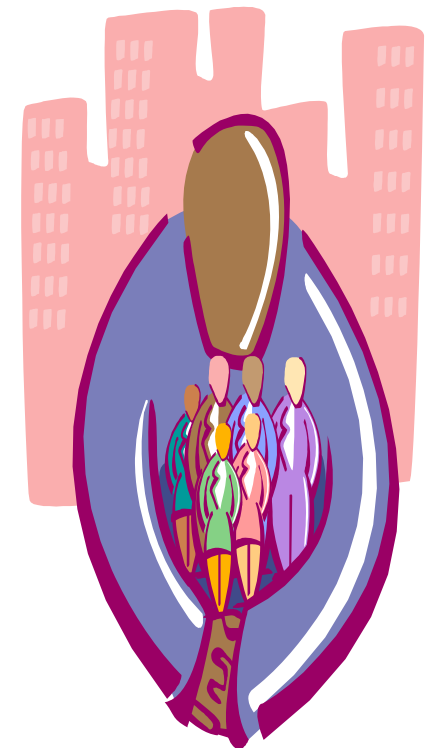
Jacqueline K. Burruss, Network Coordinator
512.854.7081



Revised December 2007
Gardner-Betts Juvenile Detention Center
Travis County Juvenile Probation
Department
2515 S. Congress Avenue
Austin, Texas 78704
512.854.7000

**TRAVIS COUNTY JUVENILE
PROBATION DEPARTMENT**

**Substance Abuse
Services
Juvenile Justice
Integrated Network**



NETWORK OF SERVICES

THE NETWORK



The Travis County Juvenile Probation Department (TCJPD) understands the complexity of cause, circumstance and individual needs inherent in the prob-

lems of juvenile crime. Therefore, it recognizes that proper and effective application of justice involves more than retribution and intervention. It is committed to balancing community protection needs with those of adolescent rehabilitation by providing accountability to victims and competency development.

The Integrated Network of services is designed to allow rapid access to alcohol and drug abuse education, intervention and treatment services for juvenile offenders in Travis County. The interaction includes rapid and unencumbered linkage to services such as mental health services, social services, case management and health care services for juveniles in Travis County. Ranges of functions performed or provided by the SASD include comprehensive screening and assessment, combined staffing and specialized probation supervision.

The Integrated Network partners are offered the opportunity to participate in diversity training at their site to ensure they learn to recognize and appreciate the strengths of cultural differences. Training activities include but are not limited to differences such as age, gender, sexual orientation, language, customs, literacy, disability, and ethnic characteristics.

The Juvenile Drug Court (JDC) utilizes a non-adversarial, non-traditional approach between the defense attorney and the prosecutor. The concept allows for the emergence of a team approach between all participants that focus on the best possible outcome for the youth and family utilizing a strength-based technique to encourage and demonstrate success.

The Substance Abuse Services Supervision Unit is responsible for supervising and monitoring substance abusing juvenile offenders to include the youth participating in the JDC.

The Substance Abuse Services Day Treatment Program is utilized as a continuum of care for clients who have successfully completed a residential substance abuse treatment program.

The Substance Abuse Services Outpatient Program is utilized as a continuum of care for clients who have successfully completed a day treatment substance abuse treatment program.

Pretreatment groups are designed as an orientation phase for clients that await placement for treatment.

The Network also provides case management and family services that will assist the youth, family and providers to effectively coordinate services.

GOALS

- To substantially reduce juvenile drug use through integrated, collaborative services;
- To increase the availability of cost effective substance abuse treatment and other treatment services;
- To reduce the rate of juvenile crime and improve social, educational and vocational functions.

YOUTH AND PARENTS

The youth and parents selected to participate in the Network will have a wide range of services made available to them and their family. The youth will be required to be cooperative and participate in treatment services.

Parents are asked to participate in family activities to help ensure successful completion of the Network and the terms of probation. Failure to comply will result in sanctions.

NETWORK PARTNERS

When a youth is placed in the Network, a case manager (if needed) and a probation officer will be assigned to support the juvenile offender. Once linked to treatment, a primary counselor is assigned. This represents the "team".

The juvenile will receive a continuum of integrated services and independent case management to meet a wide range of needs for the juvenile and family. Services can be provided by the following agencies: