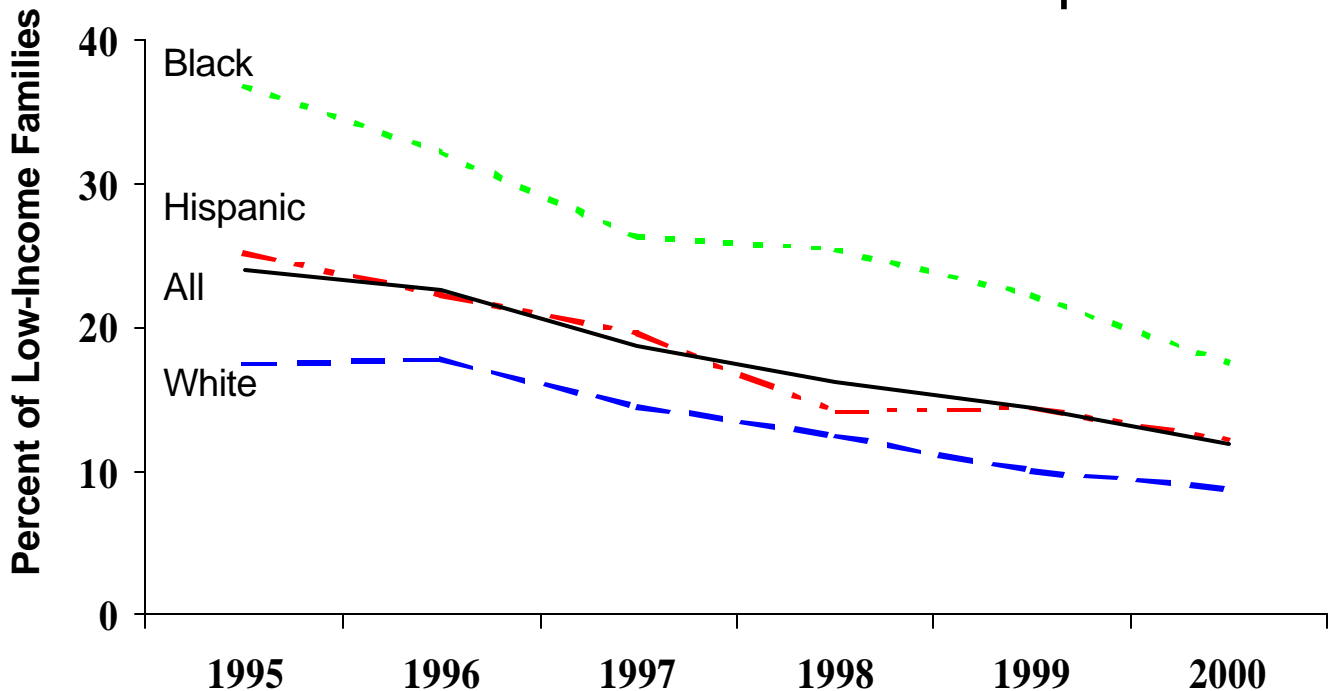




Fast Facts on Welfare Policy

Receipt of Cash Assistance Has Dropped Across Racial and Ethnic Groups



Source: Analysis of March Current Population Survey data, Urban Institute. Hispanics may be of any race. White and black indicate non-Hispanic members of either group. Asian-Americans and Native Americans, not shown separately, are included in All; chart appears in Finegold, Kenneth, and Sarah Staveteig. 2002. "Race, Ethnicity, and Welfare Reform." In [Welfare Reform: The Next Act](#) edited by Alan Weil and Kenneth Finegold (203-224). Washington, D.C.: Urban Institute Press.

Receipt of cash assistance (AFDC, TANF, or General Assistance) among each of the largest racial and ethnic groups in American society has dropped under welfare reform. This drop has occurred at a roughly similar rate among whites, blacks, and hispanics. Receipt among black low-income families is consistently higher than among all low-income families. Receipt among white low-income families is consistently lower than among all low-income families. Receipt among Hispanic low-income families runs about the same as overall, with some zigzags that may be related to shifts in the eligibility of noncitizen immigrants since 1996.