

Drug Court Policies, Practices, and Offenders' Program Experiences

Preliminary Results



Janine Zweig
Urban Institute

Co-authors:
P. Mitchell Downey
John Roman
Shelli Rossman

Presented at the NADCP 16th Annual
Training Conference
Boston, MA
June 4, 2010
Research and Evaluation Track

The views expressed are those of the authors and should not be attributed to The Urban Institute, its trustees, or its funders.



Project Partnership

- **Research Partnership:** The Urban Institute, Center for Court Innovation, & Research Triangle Institute, with funding from the National Institute of Justice (NIJ)



Purpose of the Presentation

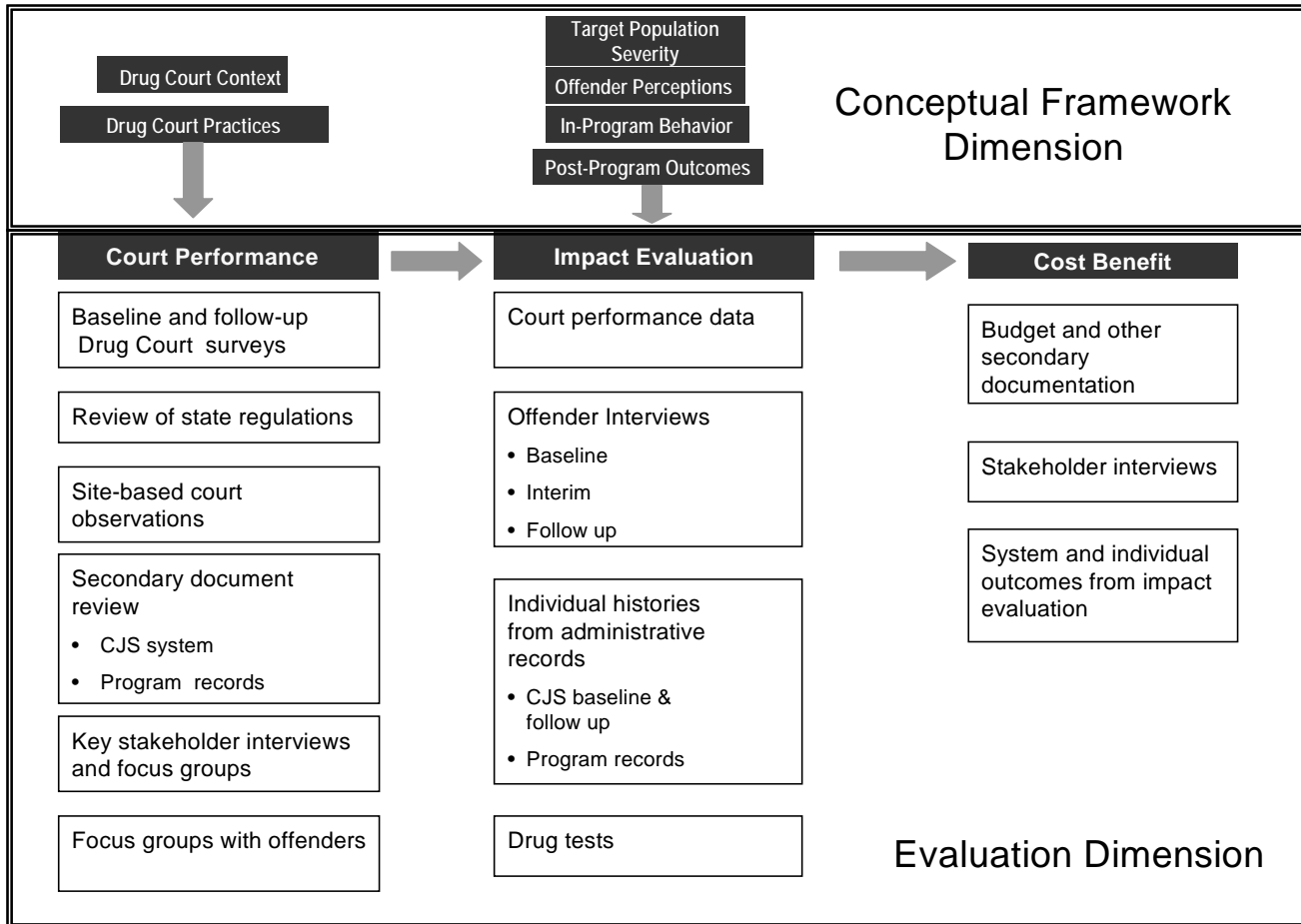
- Describe the policies and practices of drug courts with the highest performance based on participants outcomes.
- Presentation topics:
 - Overview of MADCE
 - Overview of Analytic Methods
 - Present Overall Court Rankings by Types of People
 - Examine Policies and Practices of Courts within the Context of the Court Rankings



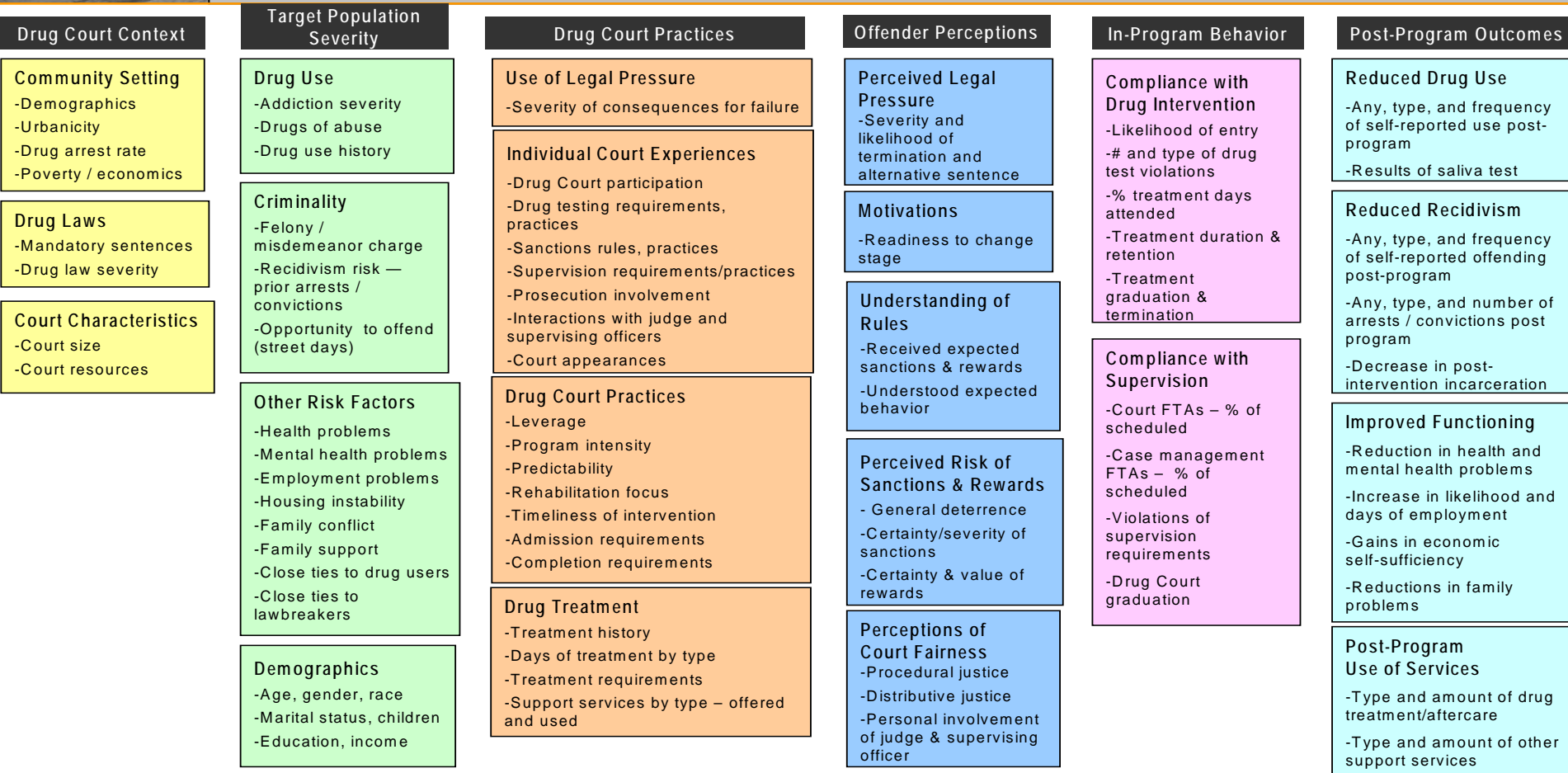
Key MADCE Research Questions

1. Do drug courts work? (Do they reduce drug use, criminal behavior, and other associated problems?)
2. Do drug courts influence offender attitudes and perceptions, and do those changes make drug courts more effective?
3. Which policies and practices make drug courts more or less effective in achieving their desired outcomes?
4. Do drug courts generate cost savings for the criminal justice system or other public institutions?

Data Collection Strategy



Conceptual Framework





Overview of Study Sample

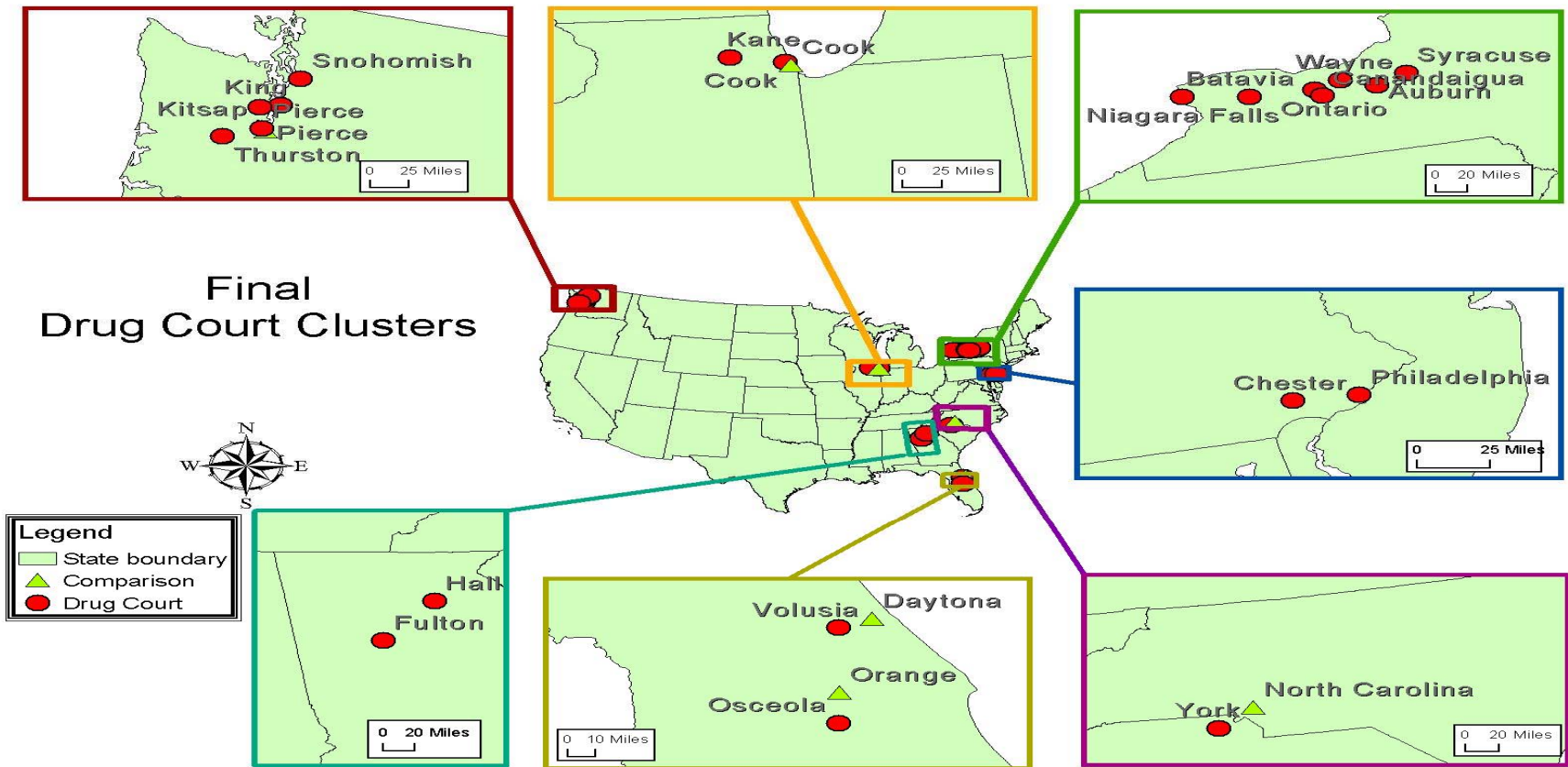
- **Drug Court vs. Comparison Sites:**
 - Drug Court: 23 sites in 7 geographic clusters (n = 1156)
 - Comparison: 6 sites in 4 geographic clusters (n = 625)
- **Repeated Measures:** baseline and multiple follow-ups:
 - Interviews at baseline, 6 months, 18 months
 - Oral fluids drug test at 18 months
 - Official recidivism records up to 24 months



Data Used for Current Analysis

- Self-reported data in offender interviews
- Court performance data from process evaluation:
 - Observed in the Drug Court Survey
 - Via phone contact with Sites
 - While on site visits to each drug court

Treatment and Comparison Sites



Demographics and Social Ties at Baseline Interview

	n=1156
Male	68%
Average age (in years)	32.97
Race/Ethnicity	
White	57%
Black/African American	29%
Hispanic / Latino	7%
Other (including multiracial)	7%
Currently Employed	39%
Ever Been Homeless	47%
Currently Married	11%
Any blood relatives ever convicted of crime	53%
Any other relatives or friends ever convicted of crime	58%
Any blood relatives ever had problems with drugs or alcohol	65%
Any other relatives or friends ever had problems with drugs or alcohol	64%

Drug Use and Treatment Six months before Baseline Interview

	n=1156
Alcohol	61%
Marijuana	46%
Cocaine	44%
Heroin	11%
Hallucinogens or designer drugs	9%
Amphetamines	15%*
Illegal prescription drugs use	16%
Illegal methadone use	4%
Primary Drug of Choice	
Cocaine	36%
Marijuana	22%
Alcohol	13%
Amphetamines (including methamphetamine)	9%
Heroin	5%
Any drug or alcohol treatment (excluding alternative approaches)	42%

Criminal Activity and Mental Health

	n=1156
Criminal Activity (six months before baseline Interview)	
Any criminal activity	75%
Drug activity (includes possession, sales, and other drug activity)	70%
Drove while intoxicated (<i>if not incarcerated during past six months</i>)	35%
Average number of criminal activities	22.73
Trauma and Mental Health Indicators	
Past Year History of Abuse	40%
Physical Abuse	28%
Sexual Abuse	9%
Harassment (e.g., harassing phone calls, insults, being sworn at)	26%
Mental Health, Self-rated as “very good” or “excellent”	48%
Depressed	39%
Anti-Social Personality Disorder	43%



Important Elements of Drug Court

- Adherence to Treatment Best Practices
- Leverage
- Predictability of Sanctions

Site Configuration Possibilities

Drug court site configurations

		Leverage	
		Yes	No
Predictability of Sanctions	Yes	High leverage/High predictability of sanctions	Low leverage/High predictability of sanctions
	No	High leverage/Low predictability of sanctions	Low leverage/Low predictability of sanctions



Overview of Analytic Methods

Quantitative Approach

- Developed two outcomes adjusted for Street Time (including incarceration, hospital/ER overnight stays, residential mental health treatment, residential substance abuse treatment, residential detoxification services)
 - Self-reported **Average days of Drug Use Per Month** (at 18 months)
 - Self-reported **Number of Criminal Activities Per Month** (at 18 months)



Overview of Analytic Methods (continued)

Quantitative Approach (continued)

- Estimated expected outcomes
 - Used only the comparison sample to run zero-inflated negative binomial regressions with fixed effects for each site to estimate the two outcomes based on theoretically and empirically selected independent variables that affect each outcome (e.g., age, age of first drug use, relatives with drug use problems, number of prior arrests, etc.)
 - Applied these estimated coefficients to the drug court participants to determine expected behaviors for that individual, based on their characteristics, *had they not been in the drug court program*.
 - Subtracted actual outcomes from expected outcomes
- Ranked courts based on performance for types of drug court participants:
 - *Courts are ranked based on the average number of acts we would have expected the court's participants to commit had they not been in drug court. The higher the number of acts curtailed, the better performing the drug court. Negative numbers imply that the court's participants had an average estimated expected outcome predicted to be better than their actual outcomes—meaning their outcomes were worse than if they had not been in drug court.*



Overview of Analytic Methods (continued)

Qualitative Approach

- Applied court performance data to court rankings for types of people
- Analyzed data for patterns of policies and practices among the top performing courts

Court Rankings for Average Days of Drug Use per Month

	General Ranking	Age 30 and Over	Under Age 30	Male	Female	In Intimate Relationship	Not in Intimate Relationship	Features of Depression	No Features of Depression	Features of Antisocial Personality Disorder (APSD)	No Features of ASPD
1	G	M	G	G	M	G	D	E	E	G	L
2	M	B	U	Q	W	<u>L</u>	I	R	T	D	U
3	Q	I	Q	U	S	M	M	A	//	Q	M
4	U	Q	D	M	U	Q	U	//	//	M	Q
5	I	L	M	V	I	<i>L</i>	S	//	//	U	<i>L</i>
6	D	N	S	I	Q	T	V	//	//	S	N
7	S	U	V	K	T	W	L	//	//	I	G
8	L	C	I	T	P	S	N	//	//	V	V
9	F	G	K	L	G	V	C	//	//	C	E
10	V	S	L	F	V	B	O	//	//	T	T
11	C	W	T	C	O	K	G	//	//	K	C
12	T	T	P	S	R	D	K	//	//	W	W
13	W	V	C	B	C	P	W	//	//	L	B
14	K	O	H	D	E	L	T	//	//	O	S
15	N	R	O	E	B	C	J	//	//	P	E
16	B	J	A	W	A	E	B	//	//	R	K
17	P	E	N	O	K	N	R	//	//	H	P
18	O	D	E	N	//	R	P	//	//	B	O
19	E	K	R	R	//	A	E	//	//	A	D
20	R	A	J	J	//	H	F	//	//	N	R
21	J	F	B	A	//	O	A	//	//	J	J
22	A	H	//	H	//	J	H	//	//	E	A
23	H	//	//	//	//	//	//	//	//	//	H

1. Courts below the red line are ones in which we predict that clients' expected outcomes were better than their actual outcomes.
2. Courts are not included in the ranking if they had less than 5 people meeting the criteria of the particular category (indicated by the symbol "//").
3. Courts whose number is in Bold/Italic/Underline represent the top three courts in that category for percent of population meeting the particular criteria. For categories where no such court is highlighted in this way, no court had over 50% of their population meeting that criteria.

Court Rankings for Average Days of Drug Use per Month (Continued)

	General Ranking	No Prior Arrests	One to Four Prior Arrests	More Than Four Prior Arrests	Previous Incarceration	No Previous Incarceration	Any Relatives or Friends with a Conviction	No Relatives or Friends with a Conviction	Age of First Drug Use: 15 or younger	Age of First Drug Use: Over Age 15	Any Substance Abuse Treatment Before Baseline	No Treatment Before Baseline
1	G	S	Q	G	I	U	G	T	U	G	I	U
2	M	D	U	U	O	Q	<u>Q</u>	V	M	L	C	G
3	Q	P	M	M	W	M	I	O	Q	Q	L	M
4	U	R	V	I	Q	F	M	I	G	M	S	Q
5	I	Q	C	L	M	G	U	B	I	I	M	T
6	D	J	K	P	T	S	S	C	S	W	G	D
7	S	H	L	T	K	D	D	P	V	S	W	V
8	L	A	T	S	C	V	C	K	F	T	E	B
9	F	O	D	K	S	I	L	A	C	D	N	S
10	V	T	S	V	R	L	V	E	T	U	P	F
11	C	K	N	W	E	C	T	R	W	C	K	C
12	T	//	G	A	V	T	W	J	L	K	O	I
13	W	//	B	L	U	N	K	H	K	V	U	K
14	K	//	I	C	A	K	F	//	P	B	B	R
15	N	//	O	B	//	P	E	//	A	N	T	L
16	B	//	E	E	//	B	B	//	O	R	H	J
17	P	//	P	F	//	O	J	//	E	O	A	O
18	O	//	R	O	//	E	R	//	B	P	J	P
19	E	//	A	R	//	W	N	//	R	E	B	E
20	R	//	J	H	//	R	P	//	H	L	//	A
21	J	//	H	//	//	A	O	//	//	A	//	H
22	A	//	//	//	//	J	A	//	//	H	//	//
23	H	//	//	//	//	H	H	//	//	//	//	//

1. Courts below the red line are ones in which we predict that clients' expected outcomes were better than their actual outcomes.
2. Courts are not included in the ranking if they had less than 5 people meeting the criteria of the particular category (indicated by the symbol "//").
3. Courts whose number is in Bold/Italic/Underline represent the top three courts in that category for percent of population meeting the particular criteria. For categories where no such court is highlighted in this way, no court had over 50% of their population meeting that criteria.

Court Rankings for Average Days of Drug Use per Month (Continued)

	General Ranking	Any Relatives or Friends with Drug Problems	No Relatives or Friends with Drug Problems	Primary Drug of Choice: Alcohol	Primary Drug of Choice: Marijuana	Primary Drug of Choice: Amphetamines	Primary Drug of Choice: Cocaine	Primary Drug of Choice: Other Drugs (heroin, hallucinogenics, prescription drugs)	Primary Drug of Choice: Anything Other Than Marijuana	Ever Tried Aggression Drugs (amphetamines, cocaine)	Never Tried Aggression Drugs (amphetamines, cocaine)
1	G	I	F	I	Q	V	U	M	G	G	I
2	M	Q	C	M	V	U	S	K	U	M	A
3	Q	G	T	C	S	S	Q	T	M	U	K
4	U	M	P	G	I	T	M	S	Q	Q	O
5	I	U	O	N	M	D	J	E	I	D	P
6	D	D	I	L	K	W	R	P	D	I	C
7	S	S	R	T	B	R	T	O	S	S	E
8	L	V	E	J	G	//	W	R	C	L	J
9	F	L	K	A	C	//	E	//	T	C	//
10	V	K	A	K	P	//	I	//	V	V	//
11	C	T	H	//	U	//	C	//	J	T	//
12	T	E	J	//	T	//	L	//	L	W	//
13	W	W	//	//	A	//	O	//	O	F	//
14	K	C	//	//	O	//	V	//	E	E	//
15	N	J	//	//	E	//	B	//	B	K	//
16	B	N	//	//	J	//	K	//	R	B	//
17	P	B	//	//	R	//	A	//	F	P	//
18	O	O	//	//	//	//	H	//	N	N	//
19	E	R	//	//	//	//	//	//	K	O	//
20	R	P	//	//	//	//	//	//	W	R	//
21	J	A	//	//	//	//	//	//	P	J	//
22	A	H	//	//	//	//	//	//	A	A	//
23	H	//	//	//	//	//	//	//	H	H	//

1. Courts below the red line are ones in which we predict that clients' expected outcomes were better than their actual outcomes.

2. Courts are not included in the ranking if they had less than 5 people meeting the criteria of the particular category (indicated by the symbol "//").

3. Courts whose number is in Bold/Italic/Underline represent the top three courts in that category for percent of population meeting the particular criteria. For categories where no such court is highlighted in this way, no court had over 50% of their population meeting that criteria.

Court Rankings for Number of Criminal Activities

	General Ranking	Age 30 and Over	Under Age 30	Male	Female	In Intimate Relationship	Not in Intimate Relationship	Features of Depression	No Features of Depression	Features of Antisocial Personality	No Features of ASPD
1	W	<u>W</u>	Q	Q	W	<u>Q</u>	D	E	T	Q	W
2	Q	<u>S</u>	M	W	S	W	S	R	E	W	L
3	S	<u>G</u>	G	G	Q	G	W	A	//	G	S
4	G	Q	L	<u>L</u>	I	T	I	//	//	D	<u>G</u>
5	L	L	D	D	V	V	M	//	//	S	Q
6	D	V	V	B	M	M	<u>L</u>	//	//	M	V
7	M	D	T	M	T	S	V	//	//	V	D
8	V	B	S	S	U	N	K	//	//	L	M
9	T	R	U	V	G	L	G	//	//	T	N
10	N	N	K	K	O	D	B	//	//	R	<u>I</u>
11	I	I	I	R	R	O	<u>B</u>	//	//	I	B
12	R	M	N	N	C	R	N	//	//	N	K
13	B	T	O	T	K	<u>I</u>	T	//	//	O	T
14	K	K	R	E	<u>E</u>	B	E	//	//	B	E
15	O	O	E	I	<u>B</u>	E	J	//	//	K	U
16	E	J	B	O	<u>P</u>	K	O	//	//	J	O
17	F	E	J	<u>J</u>	A	A	C	//	//	E	R
18	<u>J</u>	A	<u>P</u>	F	//	J	P	//	//	C	P
19	C	<u>C</u>	C	C	//	<u>U</u>	<u>U</u>	//	//	A	<u>E</u>
20	U	U	<u>H</u>	A	//	H	F	//	//	P	<u>J</u>
21	P	F	A	U	//	C	A	//	//	U	C
22	A	<u>H</u>	//	<u>H</u>	//	P	<u>H</u>	//	//	H	A
23	H	//	//	//	//	//	//	//	//	//	H

1. Courts below the red line are ones in which we predict that clients' expected outcomes were better than their actual outcomes.

2. Courts are not included in the ranking if they had less than 5 people meeting the criteria of the particular category (indicated by the symbol "//").

3. Courts whose number is in Bold/Italic/Underline represent the top three courts in that category for percent of population meeting the particular criteria. For categories where no such court is highlighted in this way, no court had over 50% of their population meeting that criteria.

Court Rankings for Number of Criminal Activities (Continued)

	General Ranking	No Prior Arrests	One to Four Prior Arrests	More Than Four Prior Arrests	Previous Incarceration	No Previous Incarceration	Any Relatives or Friends with a Conviction	No Relatives or Friends with a Conviction	Age of First Drug Use: 15 or younger	Age of First Drug Use: Over Age 15	Any Substance Abuse Treatment Before Baseline	No Treatment Before Baseline
1	W	R	L	W	I	Q	W	T	G	W	I	<u>Q</u>
2	Q	S	D	G	W	S	<u>Q</u>	V	S	<u>Q</u>	<u>W</u>	G
3	S	Q	<u>M</u>	S	O	D	<u>S</u>	K	W	<u>D</u>	S	T
4	G	P	N	<u>L</u>	S	M	G	M	Q	L	<u>L</u>	S
5	L	D	V	M	Q	V	D	O	V	S	M	<u>D</u>
6	D	O	Q	V	T	G	<u>L</u>	P	L	M	G	V
7	M	A	T	T	K	W	V	I	I	T	K	L
8	V	H	K	<u>J</u>	R	F	<u>M</u>	B	M	G	N	U
9	T	J	C	B	V	<u>L</u>	R	H	N	V	O	M
10	N	<u>K</u>	U	I	M	<u>N</u>	I	C	R	K	E	B
11	I	<u>T</u>	S	K	E	U	E	A	T	B	<u>B</u>	N
12	R	//	G	R	<u>C</u>	T	T	E	O	C	H	R
13	B	//	I	E	A	B	<u>N</u>	J	B	N	A	K
14	K	//	B	O	U	K	B	R	E	R	P	O
15	O	//	E	<u>F</u>	//	R	J	//	<u>K</u>	I	B	E
16	E	//	O	U	//	I	K	//	<u>E</u>	O	C	J
17	F	//	R	C	//	E	O	//	A	E	J	<u>F</u>
18	<u>J</u>	//	A	A	//	O	<u>C</u>	//	<u>P</u>	<u>J</u>	T	<u>C</u>
19	<u>C</u>	//	P	P	//	<u>J</u>	<u>F</u>	//	U	U	U	I
20	U	//	J	H	//	A	A	//	C	<u>A</u>	//	A
21	P	//	H	//	//	C	P	//	<u>H</u>	P	//	P
22	A	//	//	//	//	P	U	//	J	H	//	H
23	H	//	//	//	//	H	H	//	//	//	//	//

1. Courts below the red line are ones in which we predict that clients' expected outcomes were better than their actual outcomes.

2. Courts are not included in the ranking if they had less than 5 people meeting the criteria of the particular category (indicated by the symbol "//").

3. Courts whose number is in Bold/Italic/Underline represent the top three courts in that category for percent of population meeting the particular criteria. For categories where no such court is highlighted in this way, no court had over 50% of their population meeting that criteria.

Court Rankings for Number of Criminal Activities (Continued)

	General Ranking	Any Relatives or Friends with Drug Problems	No Relatives or Friends with Drug Problems	Primary Drug of Choice: Alcohol	Primary Drug of Choice: Marijuana	Primary Drug of Choice: Amphetamines	Primary Drug of Choice: Cocaine	Primary Drug of Choice: Other Drugs (heroin, hallucinogenics, prescription drugs)	Primary Drug of Choice: Anything Other Than Marijuana	Ever Tried Aggression Drugs (amphetamines, cocaine)	Never Tried Aggression Drugs (amphetamines, cocaine)
1	W	Q	T	M	S	<u>V</u>	Q	M	Q	Q	A
2	Q	W	F	I	T	U	S	K	<u>M</u>	W	I
3	S	S	O	G	Q	W	M	T	G	S	O
4	G	D	P	L	G	S	W	E	W	G	K
5	L	G	C	<u>N</u>	B	T	K	R	V	<u>D</u>	<u>P</u>
6	D	<u>L</u>	I	C	K	D	R	O	<u>D</u>	L	E
7	M	<u>M</u>	K	J	V	R	L	S	S	M	C
8	V	V	H	A	O	//	E	P	I	<u>V</u>	J
9	T	E	R	T	M	//	J	//	L	N	//
10	N	I	A	K	R	//	I	//	<u>N</u>	T	//
11	I	<u>N</u>	E	//	I	//	V	//	E	E	//
12	R	T	J	//	<u>P</u>	//	B	//	R	I	//
13	B	R	//	//	E	//	T	//	T	K	//
14	K	K	//	//	C	//	O	//	K	B	//
15	O	B	//	//	A	//	A	//	J	<u>R</u>	//
16	E	J	//	//	J	//	C	//	B	O	//
17	F	O	//	//	U	//	H	//	O	J	//
18	J	C	//	//	//	//	U	//	P	P	//
19	C	A	//	//	//	//	//	//	C	C	//
20	U	U	//	//	//	//	//	//	U	F	//
21	P	P	//	//	//	//	//	//	A	U	//
22	A	H	//	//	//	//	//	//	F	A	//
23	H	//	//	//	//	//	//	//	H	H	//

1. Courts below the red line are ones in which we predict that clients' expected outcomes were better than their actual outcomes.

2. Courts are not included in the ranking if they had less than 5 people meeting the criteria of the particular category (indicated by the symbol "//").

3. Courts whose number is in Bold/Italic/Underline represent the top three courts in that category for percent of population meeting the particular criteria. For categories where no such court is highlighted in this way, no court had over 50% of their population meeting that criteria.



Court Rankings for Leverage

- Leverage (8 points total)
 - Case management is conducted by someone who is an actual employee of the drug court (2 points).
 - Current drug court participants regularly participate in court hearings (2 points).
 - The court has explicit consequences for dropping out or failing out (2 points).
 - The client is told about the explicit consequences (1 point).
 - The explicit consequences are in a contract for the client to sign (1 point).
- High Leverage=7 or 8 (11 courts)
- Medium Leverage=5 or 6 (6 courts)
- Low Leverage=0 to 4 (6 courts)

Court Rankings for Average Days of Drug Use per Month - Leverage

Court Rankings for Substance Use Prevented at 18 Months: Coded for Leverage Scores (Page 1)

	General Ranking	Age 30 and Over	Under Age 30	Male	Female	In Intimate Relationship	Not in Intimate Relationship	Features of Depression	No Features of Depression	Features of Antisocial Personality	No Features of ASPD
1	G	M	G	G	M	G	D	E	E	G	L
2	M	B	U	Q	W	<u>L</u>	I	R	T	D	U
3	Q	I	Q	U	S	M	M	A	//	Q	M
4	U	Q	D	M	U	<u>Q</u>	U	//	//	M	Q
5	I	L	M	V	I	<u>I</u>	S	//	//	U	<u>I</u>
6	D	N	S	I	Q	T	V	//	//	S	N
7	S	U	V	K	T	W	<u>L</u>	//	//	I	<u>G</u>
8	L	C	I	T	<u>P</u>	S	N	//	//	V	V
9	F	<u>G</u>	K	<u>L</u>	G	V	C	//	//	C	<u>E</u>
10	V	S	L	F	V	B	O	//	//	T	T
11	C	<u>W</u>	T	C	O	K	G	//	//	K	C
12	T	T	<u>P</u>	S	R	D	K	//	//	W	W
13	W	V	C	B	C	P	W	//	//	L	B
14	K	O	<u>H</u>	D	E	L	T	//	//	O	S
15	N	R	O	E	B	C	J	//	//	P	E
16	B	J	A	W	A	E	B	//	//	R	K
17	P	E	N	O	K	N	<u>R</u>	//	//	H	P
18	O	D	E	N	//	R	P	//	//	B	O
19	E	K	R	R	//	A	E	//	//	A	D
20	R	A	J	<u>J</u>	//	H	F	//	//	N	R
21	J	F	B	A	//	O	<u>A</u>	//	//	J	J
22	A	H	//	<u>H</u>	//	J	<u>H</u>	//	//	E	A
23	H	//	//	//	//	//	//	//	//	//	H
	High Leverage			Medium Leverage			Low Leverage				

1. Courts below the red line are ones in which we predict that clients' expected outcomes were better than their actual outcomes.
2. Courts are not included in the ranking if they had less than 5 people meeting the criteria of the particular category (indicated by the symbol "//").
3. Courts whose number is in Bold/Italic/Underline represent the top three courts in that category for percent of population meeting the particular criteria. For categories where no such court is highlighted in this way, no court had over 50% of their population meeting that criteria.

Court Rankings for Average Days of Drug Use per Month – Leverage (continued)

	General Ranking	No Prior Arrests	One to Four Prior Arrests	More Than Four Prior Arrests	Previous Incarceration	No Previous Incarceration	Any Relatives or Friends with a Conviction	No Relatives or Friends with a Conviction	Age of First Drug Use: 15 or younger	Age of First Drug Use: Over Age 15	Any Substance Abuse Treatment Before Baseline	No Treatment Before Baseline
1	G	S	Q	G	I	U	G	T	U	G	I	U
2	M	D	U	U	O	Q	Q	V	M	L	C	G
3	Q	P	M	M	W	M	I	O	Q	Q	L	M
4	U	R	V	I	Q	F	M	I	G	M	S	Q
5	I	Q	C	L	M	G	U	B	I	I	M	T
6	D	J	K	P	T	S	S	C	S	W	G	D
7	S	H	L	T	K	D	D	P	V	S	W	V
8	L	A	T	S	C	V	C	K	E	T	E	B
9	F	O	D	K	S	I	L	A	C	D	N	S
10	V	T	S	V	R	L	V	E	T	U	P	E
11	C	K	N	W	E	C	T	R	W	C	K	C
12	T	//	G	A	V	T	W	J	L	K	O	I
13	W	//	B	L	U	N	K	H	K	V	U	K
14	K	//	I	C	A	K	F	//	P	B	B	R
15	N	//	O	B	//	P	E	//	A	N	T	L
16	B	//	E	E	//	B	B	//	O	R	H	J
17	P	//	P	E	//	O	J	//	E	O	A	O
18	O	//	R	O	//	E	R	//	B	P	J	P
19	E	//	A	R	//	W	N	//	R	E	B	E
20	R	//	J	H	//	R	P	//	H	J	//	A
21	J	//	H	//	//	A	O	//	//	A	//	H
22	A	//	//	//	//	J	A	//	//	H	//	//
23	H	//	//	//	//	H	H	//	//	//	//	//

High Leverage Medium Leverage Low Leverage

- Courts below the red line are ones in which we predict that clients' expected outcomes were better than their actual outcomes.
- Courts are not included in the ranking if they had less than 5 people meeting the criteria of the particular category (indicated by the symbol "//").
- Courts whose number is in Bold/Italic/Underline represent the top three courts in that category for percent of population meeting the particular criteria. For categories where no such court is highlighted in this way, no court had over 50% of their population meeting that criteria.

Court Rankings for Average Days of Drug Use per Month – Leverage (continued)

	General Ranking	Any Relatives or Friends with Drug Problems	No Relatives or Friends with Drug Problems	Primary Drug of Choice Alcohol	Primary Drug of Choice Marijuana	Primary Drug of Choice Amphetamines	Primary Drug of Choice Cocaine	Primary Drug of Choice Other Drugs (heroin, hallucinogenics, prescription drugs)	Primary Drug of Choice Anything Other Than Marijuana	Ever Tired Aggression Drugs (amphetamines, cocaine)	Never Tired Aggression Drugs (amphetamines, cocaine)
1	G	I	F	I	Q	V	U	M	G	G	I
2	M	Q	C	M	V	U	S	K	U	M	A
3	Q	G	T	C	S	S	Q	T	M	U	K
4	U	M	P	G	I	T	M	S	Q	Q	O
5	I	U	O	N	M	D	J	E	I	D	P
6	D	D	I	L	K	W	R	P	D	I	C
7	S	S	R	T	B	R	T	O	S	S	E
8	L	V	E	J	G	//	W	R	C	L	J
9	F	L	K	A	C	//	E	//	T	C	//
10	V	K	A	K	P	//	I	//	V	V	//
11	C	T	H	//	U	//	C	//	J	T	//
12	T	E	J	//	T	//	L	//	L	W	//
13	W	W	//	//	A	//	O	//	O	F	//
14	K	C	//	//	O	//	V	//	E	E	//
15	N	J	//	//	E	//	B	//	B	K	//
16	B	N	//	//	J	//	K	//	R	B	//
17	P	B	//	//	R	//	A	//	F	P	//
18	O	O	//	//	//	//	H	//	N	N	//
19	E	R	//	//	//	//	//	//	K	O	//
20	R	P	//	//	//	//	//	//	W	R	//
21	J	A	//	//	//	//	//	//	P	J	//
22	A	H	//	//	//	//	//	//	A	A	//
23	H	//	//	//	//	//	//	//	H	H	//
	High Leverage			Medium Leverage			Low Leverage				

1. Courts below the red line are ones in which we predict that clients' expected outcomes were better than their actual outcomes.
2. Courts are not included in the ranking if they had less than 5 people meeting the criteria of the particular category (indicated by the symbol "//").
3. Courts whose number is in Bold/Italic/Underline represent the top three courts in that category for percent of population meeting the particular criteria. For categories where no such court is highlighted in this way, no court had over 50% of their population meeting that criteria.

Court Rankings for Number of Criminal Activities - Leverage

	General Ranking	Age 30 and Over	Under Age 30	Male	Female	In Intimate Relationship	Not in Intimate Relationship	Features of Depression	No Features of Depression	Features of Antisocial Personality	No Features of ASPD
1	W	<u>W</u>	Q	Q	W	<u>Q</u>	D	E	T	Q	W
2	Q	<u>S</u>	M	W	S	W	S	R	E	W	L
3	S	<u>G</u>	G	G	Q	G	W	A	//	G	S
4	G	Q	L	<u>L</u>	I	T	I	//	//	D	<u>Q</u>
5	L	L	D	D	V	V	M	//	//	S	Q
6	D	V	V	B	M	M	<u>L</u>	//	//	M	V
7	M	D	T	M	T	S	V	//	//	V	D
8	V	B	S	S	U	N	K	//	//	L	M
9	T	R	U	V	G	L	G	//	//	T	N
10	N	N	K	K	O	D	B	//	//	R	<u>I</u>
11	I	I	I	R	R	O	<u>R</u>	//	//	I	B
12	R	M	N	N	C	R	N	//	//	N	K
13	B	T	O	T	K	<u>I</u>	T	//	//	O	T
14	K	K	R	E	E	B	E	//	//	B	E
15	O	O	E	I	B	E	J	//	//	K	U
16	E	J	B	O	<u>P</u>	K	O	//	//	J	O
17	F	E	J	<u>J</u>	A	A	C	//	//	E	R
18	J	A	<u>P</u>	F	//	J	P	//	//	C	P
19	C	C	C	C	//	<u>U</u>	U	//	//	A	<u>E</u>
20	U	U	<u>H</u>	A	//	H	F	//	//	P	J
21	P	F	A	U	//	C	A	//	//	U	C
22	A	H	//	<u>H</u>	//	P	<u>H</u>	//	//	H	A
23	H	//	//	//	//	//	//	//	//	//	H
	High Leverage			Medium Leverage			Low Leverage				

- Courts below the red line are ones in which we predict that clients' expected outcomes were better than their actual outcomes.
- Courts are not included in the ranking if they had less than 5 people meeting the criteria of the particular category (indicated by the symbol "//").
- Courts whose number is in Bold/Italic/Underline represent the top three courts in that category for percent of population meeting the particular criteria. For categories where no such court is highlighted in this way, no court had over 50% of their population meeting that criteria.

Court Rankings for Number of Criminal Activities – Leverage (continued)

	General Ranking	No Prior Arrests	One to Four Prior Arrests	More Than Four Prior Arrests	Previous Incarceration	No Previous Incarceration	Any Relatives or Friends with a Conviction	No Relatives or Friends with a Conviction	Age of First Drug Use: 15 or younger	Age of First Drug Use: Over Age 15	Any Substance Abuse Treatment Before Baseline	No Treatment Before Baseline
1	W	R	L	W	I	Q	W	T	G	W	I	Q
2	Q	S	D	G	W	S	Q	V	S	Q	W	G
3	S	Q	M	S	O	D	S	K	W	D	S	T
4	G	P	N	L	S	M	G	M	Q	L	L	S
5	L	D	V	M	Q	V	D	O	V	S	M	D
6	D	O	Q	V	T	G	L	P	L	M	G	V
7	M	A	T	T	K	W	V	I	I	T	K	L
8	V	H	K	J	R	F	M	B	M	G	N	U
9	T	J	C	B	V	L	R	H	N	V	O	M
10	N	K	U	I	M	N	I	C	R	K	E	B
11	I	T	S	K	E	U	E	A	T	B	R	N
12	R	//	G	R	C	T	T	E	O	C	H	R
13	B	//	I	E	A	B	N	J	B	N	A	K
14	K	//	B	O	U	K	B	R	E	R	P	O
15	O	//	E	E	//	R	J	//	K	I	B	E
16	E	//	O	U	//	I	K	//	E	O	C	J
17	F	//	R	C	//	E	O	//	A	E	J	E
18	J	//	A	A	//	O	C	//	P	J	T	C
19	C	//	P	P	//	J	F	//	U	U	U	I
20	U	//	J	H	//	A	A	//	C	A	//	A
21	P	//	H	//	//	C	P	//	H	P	//	P
22	A	//	//	//	//	P	U	//	J	H	//	H
23	H	//	//	//	//	H	H	//	//	//	//	//
	High Leverage		Medium Leverage		Low Leverage							

- Courts below the red line are ones in which we predict that clients' expected outcomes were better than their actual outcomes.
- Courts are not included in the ranking if they had less than 5 people meeting the criteria of the particular category (indicated by the symbol "//").
- Courts whose number is in Bold/Italic/Underline represent the top three courts in that category for percent of population meeting the particular criteria. For categories where no such court is highlighted in this way, no court had over 50% of their population meeting that criteria.

Court Rankings for Number of Criminal Activities – Leverage (continued)

	General Ranking	Any Relatives or Friends with Drug Problems	No Relatives or Friends with Drug Problems	Primary Drug of Choice: Alcohol	Primary Drug of Choice: Marijuana	Primary Drug of Choice: Amphetamines	Primary Drug of Choice: Cocaine	Primary Drug of Choice: Other Drugs (heroin, hallucinogenics, prescription drugs)	Primary Drug of Choice: Anything Other Than Marijuana	Ever Tried Aggression Drugs (amphetamines, cocaine)	Never Tried Aggression Drugs (amphetamines, cocaine)
1	W	Q	T	M	S	V	Q	M	Q	Q	A
2	Q	W	F	I	T	U	S	K	M	W	I
3	S	S	O	G	Q	W	M	T	G	S	O
4	G	D	P	L	G	S	W	E	W	G	K
5	L	G	C	N	B	T	K	R	V	D	P
6	D	L	I	C	K	D	R	O	D	L	E
7	M	M	K	J	V	R	L	S	S	M	C
8	V	V	H	A	O	//	E	P	I	V	J
9	T	E	R	T	M	//	J	//	L	N	//
10	N	I	A	K	R	//	I	//	N	T	//
11	I	N	E	//	I	//	V	//	E	E	//
12	R	T	J	//	P	//	B	//	R	I	//
13	B	R	//	//	E	//	T	//	T	K	//
14	K	K	//	//	C	//	O	//	K	B	//
15	O	B	//	//	A	//	A	//	J	B	//
16	E	J	//	//	J	//	C	//	B	O	//
17	F	O	//	//	U	//	H	//	O	J	//
18	J	C	//	//	//	//	U	//	P	P	//
19	C	A	//	//	//	//	//	//	C	C	//
20	U	U	//	//	//	//	//	//	U	F	//
21	P	P	//	//	//	//	//	//	A	U	//
22	A	H	//	//	//	//	//	//	F	A	//
23	H	//	//	//	//	//	//	//	H	H	//

High Leverage Medium Leverage Low Leverage

1. Courts below the red line are ones in which we predict that clients' expected outcomes were better than their actual outcomes.

2. Courts are not included in the ranking if they had less than 5 people meeting the criteria of the particular category (indicated by the symbol "//").

3. Courts whose number is in Bold/Italic/Underline represent the top three courts in that category for percent of population meeting the particular criteria. For categories where no such court is highlighted in this way, no court had over 50% of their population meeting that criteria.



Court Rankings for Sanctions

- Predictability of Sanctions (6 points total)
 - The court maintains an official schedule of sanctions (2 points).
 - Clients are provided with the official schedule of sanctions (2 points).
 - The official schedule of sanction is always or almost always followed (2 points).
- High Predictability=6 (9 courts)
- Medium Predictability=3, 4, or 5 (4 courts)
- Low Predictability=0, 1, and 2 (10 courts)

Court Rankings for Average Days of Drug Use per Month - Sanctions

	General Ranking	Age 30 and Over	Under Age 30	Male	Female	In Intimate Relationship	Not in Intimate Relationship	Features of Depression	No Features of Depression	Features of Antisocial Personality Disorder (APSD)	No Features of ASPD	
1	G	M	G	G	M	G	D	E	E	G	L	
2	M	B	U	Q	W	<u>L</u>	I	R	T	D	U	
3	Q	I	Q	U	S	M	M	A	//	Q	M	
4	U	Q	D	M	U	<u>Q</u>	U	//	//	M	Q	
5	I	L	M	V	I	<i>I</i>	S	//	//	U	<i>I</i>	
6	D	N	S	I	Q	T	V	//	//	S	N	
7	S	U	V	K	T	W	<u>L</u>	//	//	I	<u>G</u>	
8	L	C	I	T	<u>P</u>	S	N	//	//	V	V	
9	F	<u>G</u>	K	<u>L</u>	G	V	C	//	//	C	<u>E</u>	
10	V	<u>S</u>	L	F	V	B	O	//	//	T	T	
11	C	<u>W</u>	T	C	O	K	G	//	//	K	C	
12	T	T	<u>P</u>	S	R	D	K	//	//	W	W	
13	W	V	C	B	C	P	W	//	//	L	B	
14	K	O	<u>H</u>	D	E	L	T	//	//	O	S	
15	N	R	O	E	B	C	J	//	//	P	E	
16	B	J	A	W	A	E	B	//	//	R	K	
17	P	E	N	O	K	N	<u>B</u>	//	//	H	P	
18	O	D	E	N	//	R	P	//	//	B	O	
19	E	K	R	R	//	A	E	//	//	A	D	
20	R	A	J	<u>J</u>	//	H	F	//	//	N	R	
21	J	F	B	A	//	O	A	//	//	J	J	
22	<u>A</u>	H	//	<u>H</u>	//	J	<u>H</u>	//	//	E	A	
23	H	//	//	//	//	//	//	//	//	//	H	
	High Predictability of Sanctions			Medium Predictability of Sanctions				Low Predictability of Sanctions				

- Courts below the red line are ones in which we predict that clients' expected outcomes were better than their actual outcomes.
- Courts are not included in the ranking if they had less than 5 people meeting the criteria of the particular category (indicated by the symbol "//").
- Courts whose number is in Bold/Italic/Underline represent the top three courts in that category for percent of population meeting the particular criteria. For categories where no such court is highlighted in this way, no court had over 50% of their population meeting that criteria.

Court Rankings for Average Days of Drug Use per Month – Sanctions (continued)

	General Ranking	No Prior Arrests	One to Four Prior Arrests	More Than Four Prior Arrests	Previous Incarceration	No Previous Incarceration	Any Relatives or Friends with a Conviction	No Relatives or Friends with a Conviction	Age of First Drug Use: 15 or younger	Age of First Drug Use: Over Age 15	Any Substance Abuse Treatment Before Baseline	No Treatment Before Baseline
1	G	S	Q	G	I	U	G	T	U	G	I	U
2	M	D	U	U	O	Q	D	V	M	L	C	G
3	Q	P	<u>M</u>	M	W	M	I	O	Q	Q	L	M
4	U	R	V	I	Q	F	<u>M</u>	I	G	M	S	Q
5	I	Q	C	<u>L</u>	M	G	U	B	I	I	M	T
6	D	J	K	P	T	S	<u>S</u>	C	S	W	G	D
7	S	H	L	T	K	D	D	P	V	S	<u>W</u>	V
8	L	A	T	S	C	V	C	K	<u>E</u>	T	E	B
9	F	O	D	K	S	I	<u>L</u>	A	C	<u>D</u>	N	S
10	V	T	S	V	R	<u>L</u>	V	E	T	U	P	<u>E</u>
11	C	K	N	W	E	C	T	R	W	C	K	<u>C</u>
12	T	//	G	A	V	T	W	J	L	K	O	I
13	W	//	B	<u>J</u>	U	<u>N</u>	K	H	K	V	U	K
14	K	//	I	C	A	K	F	//	<u>P</u>	B	<u>B</u>	R
15	N	//	O	B	//	P	E	//	A	N	T	L
16	B	//	E	E	//	B	B	//	O	R	H	J
17	P	//	P	<u>E</u>	//	O	J	//	E	O	A	O
18	O	//	R	O	//	E	R	//	B	P	J	P
19	E	//	A	<u>R</u>	//	W	<u>N</u>	//	R	E	B	E
20	R	//	J	H	//	R	P	//	<u>H</u>	<u>J</u>	//	A
21	J	//	H	//	//	A	O	//	//	A	//	H
22	A	//	//	//	//	<u>J</u>	A	//	//	H	//	//
23	H	//	//	//	//	H	H	//	//	//	//	//

High Predictability of Sanctions

Medium Predictability of Sanctions

Low Predictability of Sanctions

1. Courts below the red line are ones in which we predict that clients' expected outcomes were better than their actual outcomes.
2. Courts are not included in the ranking if they had less than 5 people meeting the criteria of the particular category (indicated by the symbol "//").
3. Courts whose number is in Bold/Italic/Underline represent the top three courts in that category for percent of population meeting the particular criteria. For categories where no such court is highlighted in this way, no court had over 50% of their population meeting that criteria.

Court Rankings for Average Days of Drug Use per Month – Sanctions (continued)

	General Ranking	Any Relatives or Friends with Drug Problems	No Relatives or Friends with Drug Problems	Primary Drug of Choice: Alcohol	Primary Drug of Choice: Marijuana	Primary Drug of Choice: Amphetamines	Primary Drug of Choice: Cocaine	Primary Drug of Choice: Other Drugs (heroin, hallucinogenics, prescription drugs)	Primary Drug of Choice: Anything Other Than Marijuana	Ever Tried Aggression Drugs (amphetamines, cocaine)	Never Tried Aggression Drugs (amphetamines, cocaine)	
1	G	I	F	I	Q	V	U	M	G	G	I	
2	M	Q	C	M	V	U	S	K	U	M	A	
3	Q	G	T	C	S	S	Q	T	M	U	K	
4	U	M	P	G	I	T	M	S	Q	Q	O	
5	I	U	O	N	M	D	J	E	I	D	P	
6	D	D	I	L	K	W	R	P	D	I	C	
7	S	S	R	T	B	R	T	O	S	S	E	
8	L	V	E	J	G	//	W	R	C	L	J	
9	F	L	K	A	C	//	E	//	T	C	//	
10	V	K	A	K	P	//	I	//	V	V	//	
11	C	T	H	//	U	//	C	//	J	T	//	
12	T	E	J	//	T	//	L	//	L	W	//	
13	W	W	//	//	A	//	O	//	O	F	//	
14	K	C	//	//	O	//	V	//	E	E	//	
15	N	J	//	//	E	//	B	//	B	K	//	
16	B	N	//	//	J	//	K	//	R	B	//	
17	P	B	//	//	R	//	A	//	F	P	//	
18	O	O	//	//	//	//	H	//	N	N	//	
19	E	R	//	//	//	//	//	//	K	O	//	
20	R	P	//	//	//	//	//	//	W	B	//	
21	J	A	//	//	//	//	//	//	P	J	//	
22	A	H	//	//	//	//	//	//	A	A	//	
23	H	//	//	//	//	//	//	//	H	H	//	
	High Predictability of Sanctions				Medium Predictability of Sanctions				Low Predictability of Sanctions			

- Courts below the red line are ones in which we predict that clients' expected outcomes were better than their actual outcomes.
- Courts are not included in the ranking if they had less than 5 people meeting the criteria of the particular category (indicated by the symbol "//").
- Courts whose number is in Bold/Italic/Underline represent the top three courts in that category for percent of population meeting the particular criteria. For categories where no such court is highlighted in this way, no court had over 50% of their population meeting that criteria.

Court Rankings for Number of Criminal Activities - Sanctions

	General Ranking	Age 30 and Over	Under Age 30	Male	Female	In Intimate Relationship	Not in Intimate Relationship	Features of Depression	No Features of Depression	Features of Antisocial Personality	No Features of ASPD
1	W	<u>W</u>	Q	Q	W	<u>Q</u>	D	E	T	Q	W
2	Q	<u>S</u>	M	W	S	W	S	R	E	W	L
3	S	<u>G</u>	G	G	Q	G	W	A	//	G	S
4	G	<u>Q</u>	L	<u>L</u>	I	T	I	//	//	D	<u>G</u>
5	L	L	D	D	V	V	M	//	//	S	Q
6	D	V	V	B	M	M	<u>L</u>	//	//	M	V
7	M	D	T	M	T	S	V	//	//	V	D
8	V	B	S	S	U	N	K	//	//	L	M
9	T	R	U	V	G	L	G	//	//	T	N
10	N	N	K	K	O	D	B	//	//	R	<u>I</u>
11	I	I	I	R	R	O	<u>B</u>	//	//	I	B
12	R	M	N	N	C	R	N	//	//	N	K
13	B	T	O	T	K	<u>I</u>	T	//	//	O	T
14	K	K	R	E	E	B	E	//	//	B	E
15	O	O	E	I	B	E	J	//	//	K	U
16	E	J	B	O	<u>P</u>	K	O	//	//	J	O
17	F	E	J	<u>J</u>	A	A	C	//	//	E	R
18	J	A	<u>P</u>	F	//	<u>J</u>	P	//	//	C	P
19	C	C	C	C	//	<u>U</u>	U	//	//	A	<u>E</u>
20	U	U	<u>H</u>	A	//	H	F	//	//	P	J
21	P	F	A	U	//	C	A	//	//	U	C
22	A	H	//	<u>H</u>	//	P	<u>H</u>	//	//	H	A
23	H	//	//	//	//	//	//	//	//	//	H

High Predictability of Sanctions

Medium Predictability of Sanctions

Low Predictability of Sanctions

1. Courts below the red line are ones in which we predict that clients' expected outcomes were better than their actual outcomes.
2. Courts are not included in the ranking if they had less than 5 people meeting the criteria of the particular category (indicated by the symbol "//").
3. Courts whose number is in Bold/Italic/Underline represent the top three courts in that category for percent of population meeting the particular criteria. For categories where no such court is highlighted in this way, no court had over 50% of their population meeting that criteria.

Court Rankings for Number of Criminal Activities – Sanctions (continued)

	General Ranking	No Prior Arrests	One to Four Prior Arrests	More Than Four Prior Arrests	Previous Incarceration	No Previous Incarceration	Any Relatives or Friends with a Conviction	No Relatives or Friends with a Conviction	Age of First Drug Use: 15 or younger	Age of First Drug Use: Over Age 15	Any Substance Abuse Treatment Before Baseline	No Treatment Before Baseline
1	W	R	L	W	I	Q	W	T	G	W	I	Q
2	Q	S	D	G	W	S	Q	V	S	Q	W	G
3	S	Q	M	S	O	D	S	K	W	D	S	T
4	G	P	N	L	S	M	G	M	Q	L	L	S
5	L	D	V	M	Q	V	D	O	V	S	M	D
6	D	O	Q	V	T	G	L	P	L	M	G	V
7	M	A	T	T	K	W	V	I	I	T	K	L
8	V	H	K	J	R	F	M	B	M	G	N	U
9	T	J	C	B	V	L	R	H	N	V	O	M
10	N	K	U	I	M	N	I	C	R	K	E	B
11	I	T	S	K	E	U	E	A	T	B	B	N
12	R	//	G	R	C	T	T	E	O	C	H	R
13	B	//	I	E	A	B	N	J	B	N	A	K
14	K	//	B	O	U	K	B	R	E	R	P	O
15	O	//	E	E	//	R	J	//	K	I	B	E
16	E	//	O	U	//	I	K	//	F	O	C	J
17	F	//	R	C	//	E	O	//	A	E	J	E
18	J	//	A	A	//	O	C	//	P	J	T	C
19	C	//	P	P	//	J	F	//	U	U	U	I
20	U	//	J	H	//	A	A	//	C	A	//	A
21	P	//	H	//	//	C	P	//	H	P	//	P
22	A	//	//	//	//	P	U	//	J	H	//	H
23	H	//	//	//	//	H	H	//	//	//	//	//

High Predictability of Sanctions

Medium Predictability of Sanctions

Low Predictability of Sanctions

1. Courts below the red line are ones in which we predict that clients' expected outcomes were better than their actual outcomes.
2. Courts are not included in the ranking if they had less than 5 people meeting the criteria of the particular category (indicated by the symbol "//").
3. Courts whose number is in Bold/Italic/Underline represent the top three courts in that category for percent of population meeting the particular criteria. For categories where no such court is highlighted in this way, no court had over 50% of their population meeting that criteria.

Court Rankings for Number of Criminal Activities – Sanctions (continued)

	General Ranking	Any Relatives or Friends with Drug Problems	No Relatives or Friends with Drug Problems	Primary Drug of Choice: Alcohol	Primary Drug of Choice: Marijuana	Primary Drug of Choice: Amphetamines	Primary Drug of Choice: Cocaine	Primary Drug of Choice: Other Drugs (heroin, hallucinogenics, prescription drugs)	Primary Drug of Choice: Anything Other Than Marijuana	Ever Tried Aggression Drugs (amphetamines, cocaine)	Never Tried Aggression Drugs (amphetamines, cocaine)	
1	W	Q	T	M	S	K	Q	M	Q	Q	A	
2	Q	W	F	I	T	U	S	K	M	W	I	
3	S	S	O	G	Q	W	M	T	G	S	O	
4	G	D	P	L	G	S	W	E	W	G	K	
5	L	G	C	N	B	T	K	R	V	D	P	
6	D	L	I	C	K	D	R	O	D	L	E	
7	M	M	K	J	V	R	L	S	S	M	C	
8	V	V	H	A	O	//	E	P	I	V	J	
9	T	E	R	T	M	//	J	//	L	N	//	
10	N	I	A	K	R	//	I	//	N	T	//	
11	I	N	E	//	I	//	V	//	E	E	//	
12	R	T	J	//	P	//	B	//	R	I	//	
13	B	R	//	//	E	//	T	//	T	K	//	
14	K	K	//	//	C	//	O	//	K	B	//	
15	O	B	//	//	A	//	A	//	J	R	//	
16	E	J	//	//	J	//	C	//	B	O	//	
17	F	O	//	//	U	//	H	//	O	J	//	
18	J	C	//	//	//	//	U	//	P	P	//	
19	C	A	//	//	//	//	//	//	C	C	//	
20	U	U	//	//	//	//	//	//	U	F	//	
21	P	P	//	//	//	//	//	//	A	U	//	
22	A	H	//	//	//	//	//	//	F	A	//	
23	H	//	//	//	//	//	//	//	H	H	//	
	High Predictability of Sanctions			Medium Predictability of Sanctions				Low Predictability of Sanctions				

- Courts below the red line are ones in which we predict that clients' expected outcomes were better than their actual outcomes.
- Courts are not included in the ranking if they had less than 5 people meeting the criteria of the particular category (indicated by the symbol "//").
- Courts whose number is in Bold/Italic/Underline represent the top three courts in that category for percent of population meeting the particular criteria. For categories where no such court is highlighted in this way, no court had over 50% of their population meeting that criteria.



Court Rankings for Adherence to Treatment Best Practices

- Adherence to Treatment Best Practices (6 points total)
 - The treatment provided by the drug court is structured—that is, a treatment program manual is followed (2 points).
 - A clinical assessment is conducted for treatment needs (1 point).
 - Individualized treatment plans are developed for each client (1 point).
 - Individualized treatment plans are used to make referrals (1 point).
 - Individualized treatment plans are updated periodically (1 point).
- High Adherence=6 (15 courts)
- Medium Adherence=4 or 5 (6 courts)
- Low Adherence=0 to 3 (2 courts)

Court Rankings for Average Days of Drug Use per Month – Adherence to Treatment Best Practices

	General Ranking	Age 30 and Over	Under Age 30	Male	Female	In Intimate Relationship	Not in Intimate Relationship	Features of Depression	No Features of Depression	Features of Antisocial Personality	No Features of ASPD
1	G	M	G	G	M	G	D	E	E	G	L
2	M	B	U	Q	W	U	I	R	T	D	U
3	Q	I	Q	U	S	M	M	A	//	Q	M
4	U	Q	D	M	U	Q	U	//	//	M	Q
5	I	L	M	V	I	I	S	//	//	U	I
6	D	N	S	I	Q	T	V	//	//	S	N
7	S	U	V	K	T	W	L	//	//	I	G
8	L	C	I	T	P	S	N	//	//	V	V
9	F	G	K	L	G	V	C	//	//	C	F
10	V	S	L	F	V	B	O	//	//	T	T
11	C	W	T	C	O	K	G	//	//	K	C
12	T	T	P	S	R	D	K	//	//	W	W
13	W	V	C	B	C	P	W	//	//	L	B
14	K	O	H	D	E	L	T	//	//	O	S
15	N	R	O	E	B	C	J	//	//	P	E
16	B	J	A	W	A	E	B	//	//	R	K
17	P	E	N	O	K	N	R	//	//	H	P
18	O	D	E	N	//	R	P	//	//	B	O
19	E	K	R	R	//	A	E	//	//	A	D
20	R	A	J	J	//	H	F	//	//	N	R
21	J	F	B	A	//	O	A	//	//	J	J
22	A	H	//	H	//	J	H	//	//	E	A
23	H	//	//	//	//	//	//	//	//	//	H

High Adherence to Treatment Best Practices

Medium Adherence

Low Adherence

1. Courts below the red line are ones in which we predict that clients' expected outcomes were better than their actual outcomes.

2. Courts are not included in the ranking if they had less than 5 people meeting the criteria of the particular category (indicated by the symbol "//").

3. Courts whose number is in Bold/Italic/Underline represent the top three courts in that category for percent of population meeting the particular criteria. For categories where no such court is highlighted in this way, no court had over 50% of their population meeting that criteria.

Court Rankings for Average Days of Drug Use per Month – Adherence to Treatment Best Practices (continued)

	General Ranking	No Prior Arrests	One to Four Prior Arrests	More Than Four Prior Arrests	Previous Incarceration	No Previous Incarceration	Any Relatives or Friends with a Conviction	No Relatives or Friends with a Conviction	Age of First Drug Use: 15 or younger	Age of First Drug Use: Over Age 15	Any Substance Abuse Treatment Before Baseline	No Treatment Before Baseline
1	G	S	Q	G	I	U	G	T	U	G	I	U
2	M	D	U	U	O	Q	D	V	M	L	C	G
3	Q	P	M	M	W	M	I	O	Q	D	L	M
4	U	R	V	I	Q	F	M	I	G	M	S	D
5	I	Q	C	L	M	G	U	B	I	I	M	T
6	D	J	K	P	T	S	S	C	S	W	G	D
7	S	H	L	T	K	D	D	P	V	S	W	V
8	L	A	T	S	C	V	C	K	E	T	E	B
9	F	O	D	K	S	I	L	A	C	D	N	S
10	V	T	S	V	R	L	V	E	T	U	P	E
11	C	K	N	W	E	C	T	R	W	C	K	C
12	T	//	G	A	V	T	W	J	L	K	O	I
13	W	//	B	L	U	N	K	H	K	V	U	K
14	K	//	I	C	A	K	F	//	P	B	B	R
15	N	//	O	B	//	P	E	//	A	N	T	L
16	B	//	E	E	//	B	B	//	O	R	H	J
17	P	//	P	E	//	O	J	//	E	O	A	O
18	O	//	R	O	//	E	R	//	B	P	J	P
19	E	//	A	R	//	W	N	//	R	E	B	E
20	R	//	J	H	//	R	P	//	H	J	//	A
21	J	//	H	//	//	A	O	//	//	A	//	H
22	A	//	//	//	//	J	A	//	//	H	//	//
23	H	//	//	//	//	H	H	//	//	//	//	//

High Adherence to Treatment Best Practices

Medium Adherence

Low Adherence

1. Courts below the red line are ones in which we predict that clients' expected outcomes were better than their actual outcomes.

2. Courts are not included in the ranking if they had less than 5 people meeting the criteria of the particular category (indicated by the symbol "//").

3. Courts whose number is in Bold/Italic/Underline represent the top three courts in that category for percent of population meeting the particular criteria. For categories where no such court is highlighted in this way, no court had over 50% of their population meeting that criteria.

Court Rankings for Average Days of Drug Use per Month – Adherence to Treatment Best Practices (continued)

	General Ranking	Any Relatives or Friends with Drug Problems	No Relatives or Friends with Drug Problems	Primary Drug of Choice: Alcohol	Primary Drug of Choice: Marijuana	Primary Drug of Choice: Amphetamines	Primary Drug of Choice: Cocaine	Primary Drug of Choice: Other Drugs (heroin, hallucinogenics, prescription drugs)	Primary Drug of Choice: Anything Other Than Marijuana	Ever Tried Aggression Drugs (amphetamines, cocaine)	Never Tried Aggression Drugs (amphetamines, cocaine)
1	G	I	F	I	Q	K	U	M	G	G	I
2	M	Q	C	M	V	U	S	K	U	M	A
3	Q	G	T	C	S	S	Q	T	M	U	K
4	U	M	P	G	I	T	M	S	Q	Q	O
5	I	U	O	N	M	D	J	E	I	D	P
6	D	D	I	L	K	W	R	P	D	I	C
7	S	S	R	T	B	R	T	O	S	S	E
8	L	V	E	J	G	//	W	R	C	L	J
9	F	L	K	A	C	//	E	//	T	C	//
10	V	K	A	K	P	//	I	//	V	V	//
11	C	T	H	//	U	//	C	//	J	T	//
12	T	E	J	//	T	//	L	//	L	W	//
13	W	W	//	//	A	//	O	//	O	F	//
14	K	C	//	//	O	//	V	//	E	E	//
15	N	J	//	//	E	//	B	//	B	K	//
16	B	N	//	//	J	//	K	//	R	B	//
17	P	B	//	//	R	//	A	//	F	P	//
18	O	O	//	//	//	//	H	//	N	N	//
19	E	R	//	//	//	//	//	//	K	O	//
20	R	P	//	//	//	//	//	//	W	R	//
21	J	A	//	//	//	//	//	//	P	J	//
22	A	H	//	//	//	//	//	//	A	A	//
23	H	//	//	//	//	//	//	//	H	H	//

High Adherence to Treatment Best Practices

Medium Adherence

Low Adherence

1. Courts below the red line are ones in which we predict that clients' expected outcomes were better than their actual outcomes.

2. Courts are not included in the ranking if they had less than 5 people meeting the criteria of the particular category (indicated by the symbol "//").

3. Courts whose number is in Bold/Italic/Underline represent the top three courts in that category for percent of population meeting the particular criteria. For categories where no such court is highlighted in this way, no court had over 50% of their population meeting that criteria.

Court Rankings for Number of Criminal Activities - Adherence to Treatment Best Practices

	General Ranking	Age 30 and Over	Under Age 30	Male	Female	In Intimate Relationship	Not in Intimate Relationship	Features of Depression	No Features of Depression	Features of Antisocial Personality	No Features of ASPD
1	W	W	Q	Q	W	Q	D	E	T	Q	W
2	Q	S	M	W	S	W	S	R	E	W	L
3	S	G	G	G	Q	G	W	A	//	G	S
4	G	Q	L	L	I	T	I	//	//	D	Q
5	L	L	D	D	V	V	M	//	//	S	Q
6	D	V	V	B	M	M	L	//	//	M	V
7	M	D	T	M	T	S	V	//	//	V	D
8	V	B	S	S	U	N	K	//	//	L	M
9	T	R	U	V	G	L	G	//	//	T	N
10	N	N	K	K	O	D	B	//	//	R	I
11	I	I	I	R	R	O	R	//	//	I	B
12	R	M	N	N	C	R	N	//	//	N	K
13	B	T	O	T	K	I	T	//	//	O	T
14	K	K	R	E	E	B	E	//	//	B	E
15	O	O	E	I	B	E	J	//	//	K	U
16	E	J	B	O	P	K	O	//	//	J	O
17	F	E	J	J	A	A	C	//	//	E	R
18	J	A	P	F	//	J	P	//	//	C	P
19	C	C	C	C	//	U	U	//	//	A	E
20	U	U	H	A	//	H	F	//	//	P	J
21	P	F	A	U	//	C	A	//	//	U	C
22	A	H	//	H	//	P	H	//	//	H	A
23	H	//	//	//	//	//	//	//	//	//	H

High Adherence to Treatment Best Practices

Medium Adherence

Low Adherence

1. Courts below the red line are ones in which we predict that clients' expected outcomes were better than their actual outcomes.
2. Courts are not included in the ranking if they had less than 5 people meeting the criteria of the particular category (indicated by the symbol "//").
3. Courts whose number is in Bold/Italic/Underline represent the top three courts in that category for percent of population meeting the particular criteria. For categories where no such court is highlighted in this way, no court had over 50% of their population meeting that criteria.

Court Rankings for Number of Criminal Activities – Adherence to Treatment Best Practices (continued)

	General Ranking	No Prior Arrests	One to Four Prior Arrests	More Than Four Prior Arrests	Previous Incarceration	No Previous Incarceration	Any Relatives or Friends with a Conviction	No Relatives or Friends with a Conviction	Age of First Drug Use: 15 or younger	Age of First Drug Use: Over Age 15	Any Substance Abuse Treatment Before Baseline	No Treatment Before Baseline
1	W	R	L	W	I	Q	W	T	G	W	I	<u>D</u>
2	Q	S	D	G	W	S	<u>D</u>	V	S	<u>D</u>	<u>W</u>	G
3	S	Q	<u>M</u>	S	O	D	<u>S</u>	K	W	<u>D</u>	S	T
4	G	P	N	<u>L</u>	S	M	G	M	Q	L	<u>L</u>	S
5	L	D	V	M	Q	V	D	O	V	S	M	<u>D</u>
6	D	O	Q	V	T	G	<u>L</u>	P	L	M	G	V
7	M	A	T	T	K	W	V	I	I	T	K	L
8	V	H	K	<u>J</u>	R	F	<u>M</u>	B	M	G	N	U
9	T	J	C	B	V	<u>L</u>	R	<u>H</u>	N	V	O	M
10	N	K	U	I	M	<u>N</u>	I	C	R	K	E	B
11	I	T	S	K	E	U	E	A	T	B	<u>B</u>	N
12	R	//	G	R	<u>C</u>	T	T	E	O	C	H	R
13	B	//	I	E	A	B	<u>N</u>	J	B	N	A	K
14	K	//	B	O	U	K	B	R	E	R	P	O
15	O	//	E	<u>E</u>	//	R	J	//	K	I	B	E
16	E	//	O	U	//	I	K	//	<u>E</u>	O	C	J
17	F	//	R	C	//	E	O	//	A	E	J	<u>E</u>
18	J	//	A	A	//	O	<u>C</u>	//	<u>P</u>	<u>J</u>	T	<u>C</u>
19	C	//	P	P	//	<u>J</u>	F	//	U	U	U	I
20	U	//	J	H	//	A	A	//	C	A	//	A
21	P	//	H	//	//	C	P	//	<u>H</u>	P	//	P
22	A	//	//	//	//	P	U	//	J	H	//	H
23	H	//	//	//	//	H	H	//	//	//	//	//
	High Adherence to Treatment Best Practices					Medium Adherence			Low Adherence			

- Courts below the red line are ones in which we predict that clients' expected outcomes were better than their actual outcomes.
- Courts are not included in the ranking if they had less than 5 people meeting the criteria of the particular category (indicated by the symbol "//").
- Courts whose number is in Bold/Italic/Underline represent the top three courts in that category for percent of population meeting the particular criteria. For categories where no such court is highlighted in this way, no court had over 50% of their population meeting that criteria.

Court Rankings for Number of Criminal Activities – Adherence to Treatment Best Practices (continued)

	General Ranking	Any Relatives or Friends with Drug Problems	No Relatives or Friends with Drug Problems	Primary Drug of Choice: Alcohol	Primary Drug of Choice: Marijuana	Primary Drug of Choice: Amphetamines	Primary Drug of Choice: Cocaine	Primary Drug of Choice: Other Drugs (heroin, hallucinogenics, prescription drugs)	Primary Drug of Choice: Anything Other Than Marijuana	Ever Tried Aggression Drugs (amphetamines, cocaine)	Never Tried Aggression Drugs (amphetamines, cocaine)	
1	W	Q	T	M	S	V	Q	M	Q	Q	A	
2	Q	W	F	I	T	U	S	K	M	W	I	
3	S	S	O	G	Q	W	M	T	G	S	O	
4	G	D	P	L	G	S	W	E	W	G	K	
5	L	G	C	N	B	T	K	R	V	D	P	
6	D	L	I	C	K	D	R	O	D	L	E	
7	M	M	K	J	V	R	L	S	S	M	C	
8	V	V	H	A	O	//	E	P	I	V	J	
9	T	E	R	T	M	//	J	//	L	N	//	
10	N	I	A	K	R	//	I	//	N	T	//	
11	I	N	E	//	I	//	V	//	E	E	//	
12	R	T	J	//	P	//	B	//	R	I	//	
13	B	R	//	//	E	//	T	//	T	K	//	
14	K	K	//	//	C	//	O	//	K	B	//	
15	O	B	//	//	A	//	A	//	J	R	//	
16	E	J	//	//	J	//	C	//	B	O	//	
17	F	O	//	//	U	//	H	//	O	J	//	
18	J	C	//	//	//	//	U	//	P	P	//	
19	C	A	//	//	//	//	//	//	C	C	//	
20	U	U	//	//	//	//	//	//	U	F	//	
21	P	P	//	//	//	//	//	//	A	U	//	
22	A	H	//	//	//	//	//	//	F	A	//	
23	H	//	//	//	//	//	//	//	H	H	//	
	High Adherence to Treatment Best Practices						Medium Adherence				Low Adherence	

1. Courts below the red line are ones in which we predict that clients' expected outcomes were better than their actual outcomes.
2. Courts are not included in the ranking if they had less than 5 people meeting the criteria of the particular category (indicated by the symbol "//").
3. Courts whose number is in Bold/Italic/Underline represent the top three courts in that category for percent of population meeting the particular criteria. For categories where no such court is highlighted in this way, no court had over 50% of their population meeting that criteria.



Conclusions

Courts showing the best outcomes had:

- High Leverage
- Medium Predictability of Sanctions
- Adherence to Treatment Best Practices – no clear patterns:
 - More courts adhered with treatment best practices, so less variation
 - Both high and low performing courts implemented best practice treatment practices
 - It may be that for substance-using offenders, treatment practices—in combination with other court features—may influence court performance, rather than treatment practices alone



Conclusions (continued)

- Next Steps to Understand Court Rankings:
 - Examine the drug court features presented here, but in combination
 - Examine program intensity measures (e.g., frequency of drug tests, court hearings case management)
 - Examine client eligibility requirements